

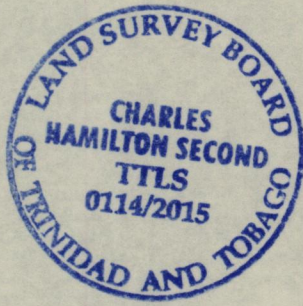
1561

Cadastral Sheet B.17.J, 3/c/1 <sup>13F</sup> 1837

Process ~~122~~ 111124

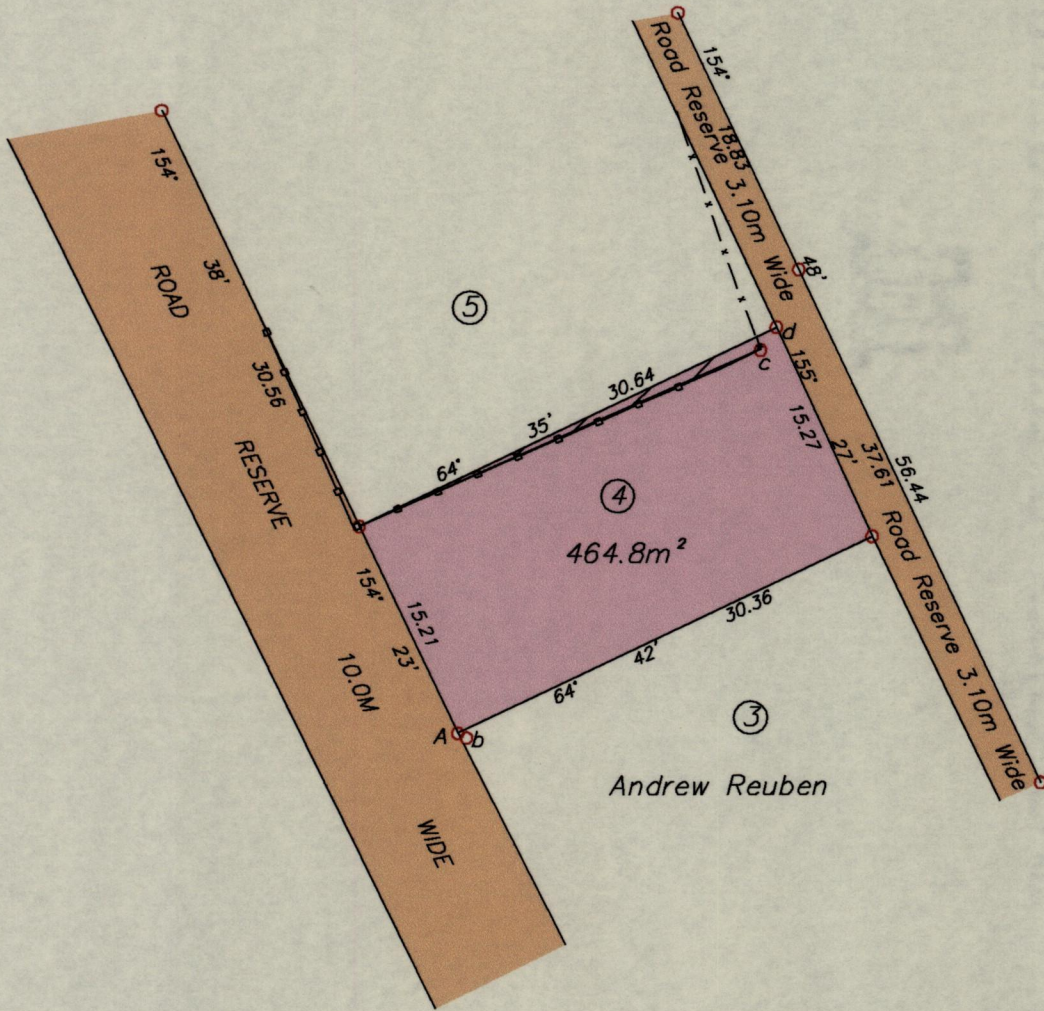
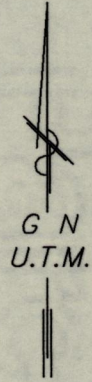
Ward of St. Anns  
County of St. George

BAGATELLE



REFERENCES

- Bk. 1101 Fol. 97
- Bk. 984 Fol. 137
- Bk. 1173 Fol. 42
- Bk. 1248 Fol. 211



Andrew Reuben

	Encroachment	12.1m <sup>2</sup>
A - b	119° 19'	0.65m
c - d	34° 35'	1.85m
Chain link fence	- - - - -	

A = N 1178763 +/- 5.0m  
E 668874  
UTM Zone 20 Naparima Datum  
Hand Held GPS

- To obtain Cassini bearings add 19 minutes
- Denotes Iron found unless otherwise stated
- Bearings are U.T.M. Grid based on solar observations.

SCALE 1:500  
Distances are in METRES

PLAN of a Parcel of land coloured pink in the Ward of St. Anns  
Containing four hundred and sixty four point eight square metres  
Surveyed by me, with due authority, in April 2015 for Calva Cornwall  
Certified correct in accordance with Regulation 25 (1) of the Land Surveyors Regulations 1998.

..... Charles H. Second ..... T.T.L.S.

Entered on ..... Trinidad & Tobago .....  
Land Surveyor

6th July 2015

