

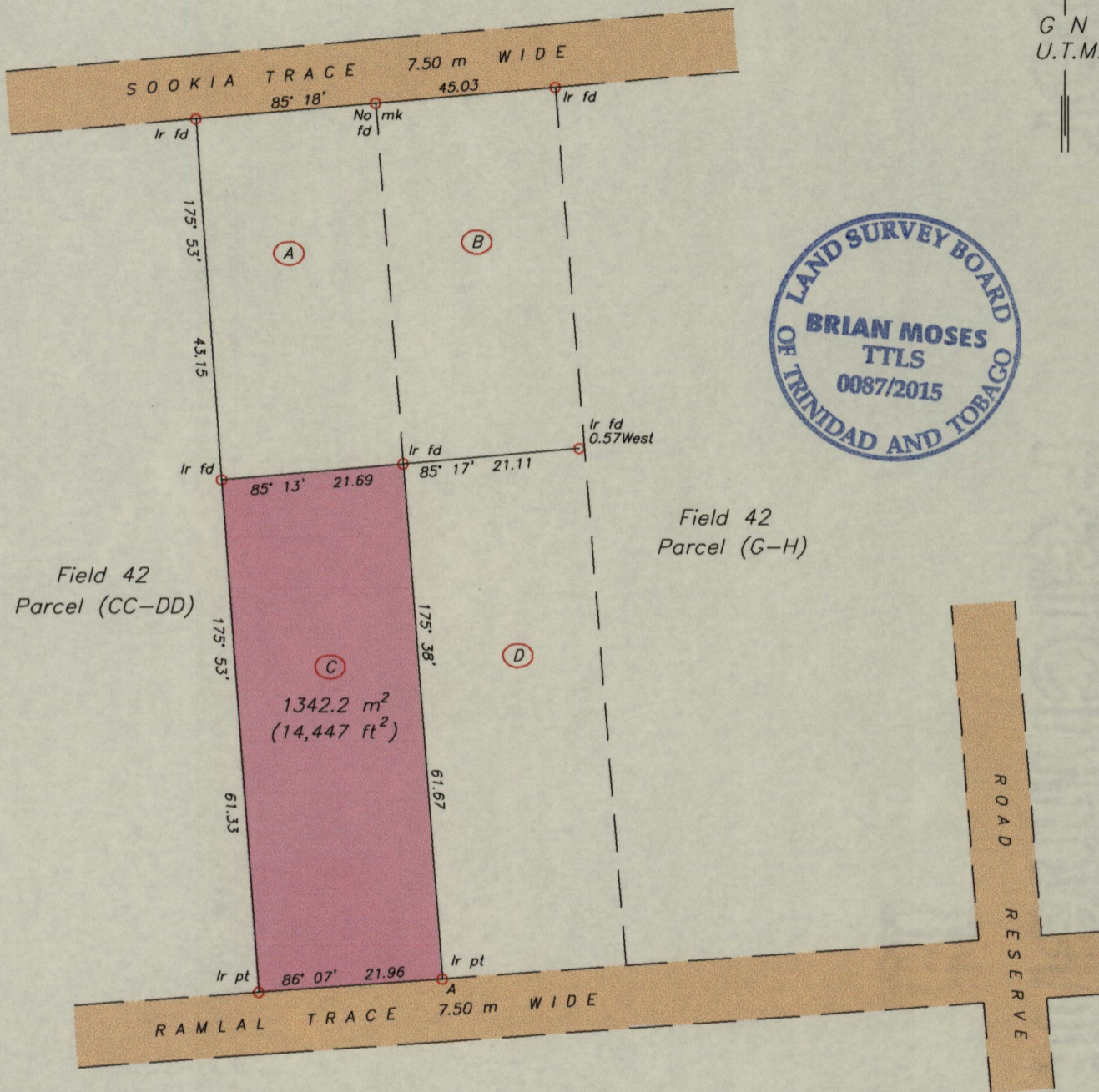
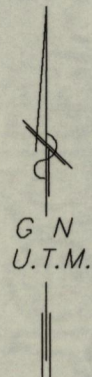
1561

1834

Process ID# 11110  
AMENDED PLAN

Cadastral Sheet B.17.0. <sup>23C</sup>/<sub>1/d</sub>  
Ward of St. Anns  
County of St. George

ARANJUEZ  
Field 42  
Parcel (EE-FF)



Field 42  
Parcel (CC-DD)

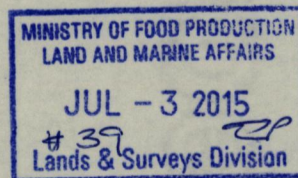
Field 42  
Parcel (G-H)

SCALE 1:750  
Distances are in METRES

A - N 1176274  
E 670901  
Derived From Hand-Held GPS (+/-5 m)  
U.T.M. Zone 20 Naparima Co-ordinates

Bearings are UTM Grid based on Solar observations

PLAN of a Parcel of land coloured pink in the Ward of St. Anns  
Containing one thousand three hundred and forty two point two square metres  
Surveyed by me, with due authority, in June, 2015 for Varune & Mahadeo Mungal  
Certified Correct in accordance with Regulation 25 (1) of the Land Surveyors  
Regulations 1998.



Entered

*Brian Moses*  
Trinidad & Tobago Land Surveyor (T.T.L.S.)  
3rd July 2015