

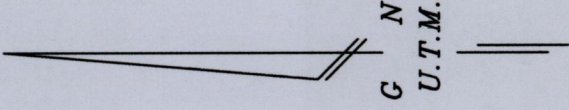
1561

1832

Cadastral Sheet A.20.E. 13D
3/b

City of Port Of Spain

County of St. George



See Bk:712/122

--- B'ldg line

SCALE 1/1250

Distances are in metres

○ Denotes Boundary corners
Bearings are U.T.M. grid based on Control marks
Note: To obtain Cassini bearings add 18 minutes.

PLAN of a Parcel of land coloured pink in the City of Port of Spain

Containing zero point two four eight hectares

Prepared by me, with due authority, in September 2014 for Yasin Abu Bakr

Certified correct in accordance with Regulation 25 (1)

of the Land Surveyors Regulations 1998,

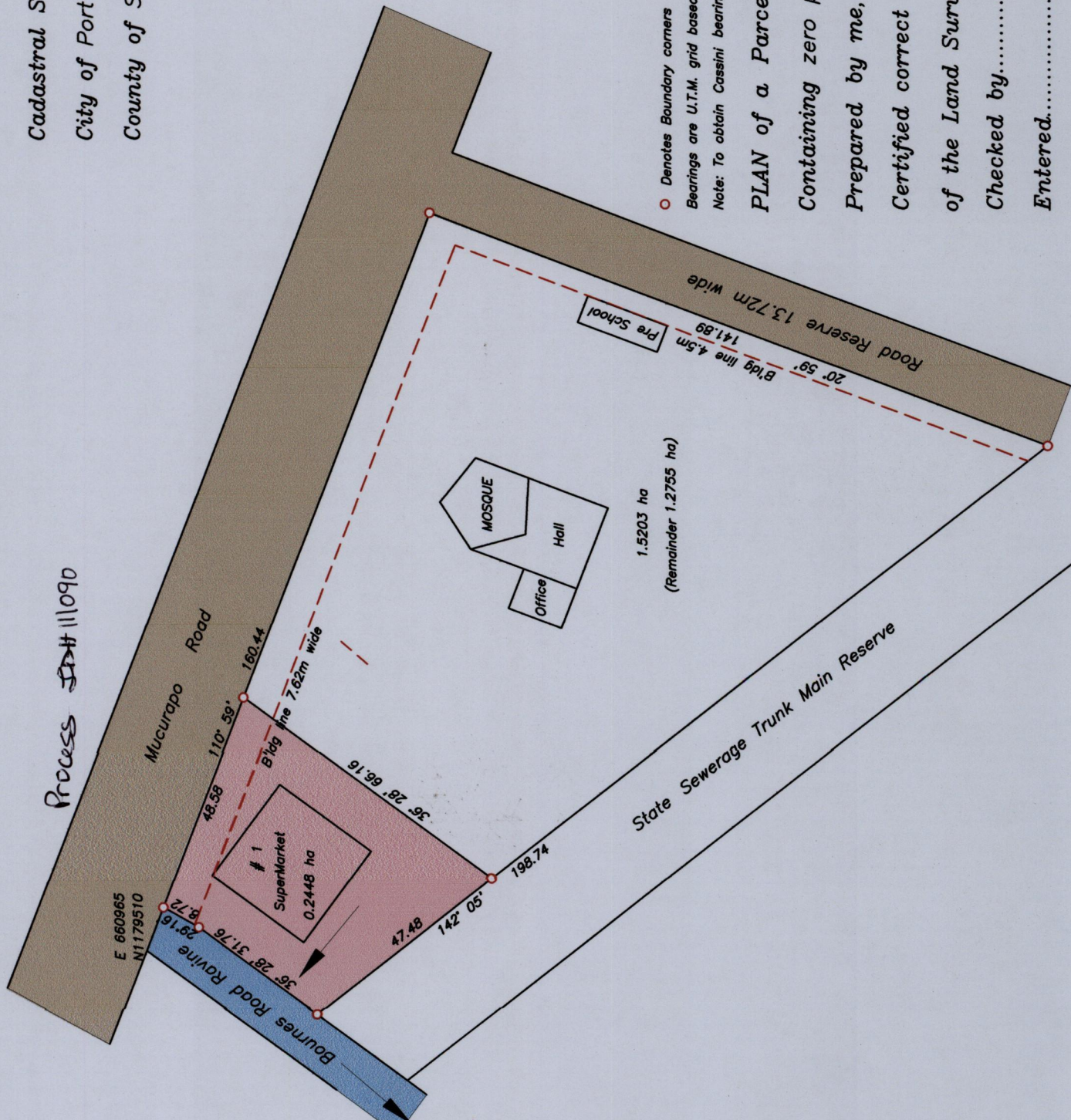
Checked by.....

A. S. Akbar Luv

26/9/15

Entered..... Trinidad & Tobago Land Surveyor.....

Plans\G\Gregoire Chickland Caparo Road



Process 111090

E 660965
N1179510

Mucurapo Road

1 Supermarket
0.2448 ha

MOSQUE
Hall
Office

1.5203 ha
(Remainder 1.2755 ha)

State Sewerage Trunk Main Reserve

Road Reserve 13.72m wide
B'ldg line 4.5m
141.89
Pre School

B'ldg line 7.02m wide

110° 59'

48.38

180.44

35° 28' 66.16"

47.48

142° 05'

198.74

29° 16'

36° 28' 31.76"

8.72

Bournes Road Rqvirre