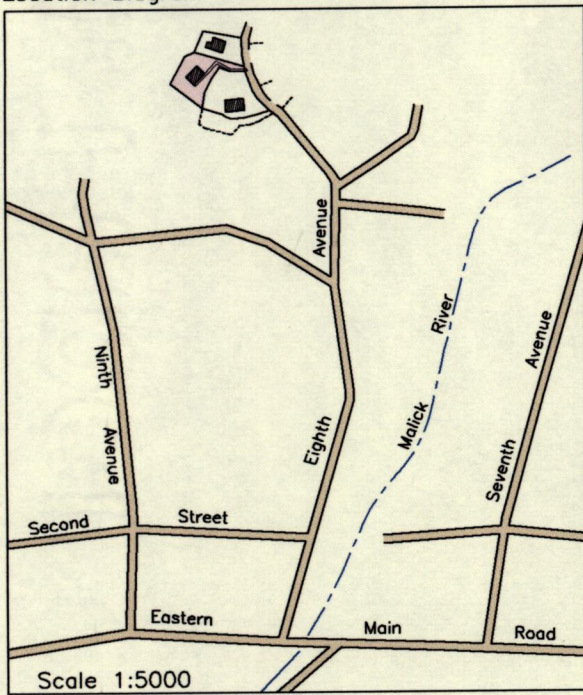


Location Diagram



Scale 1:5000

Cadastral Sheet ^{23B} 2/b (B.17.M)

1561

Ward of St. Anns
County of St. George

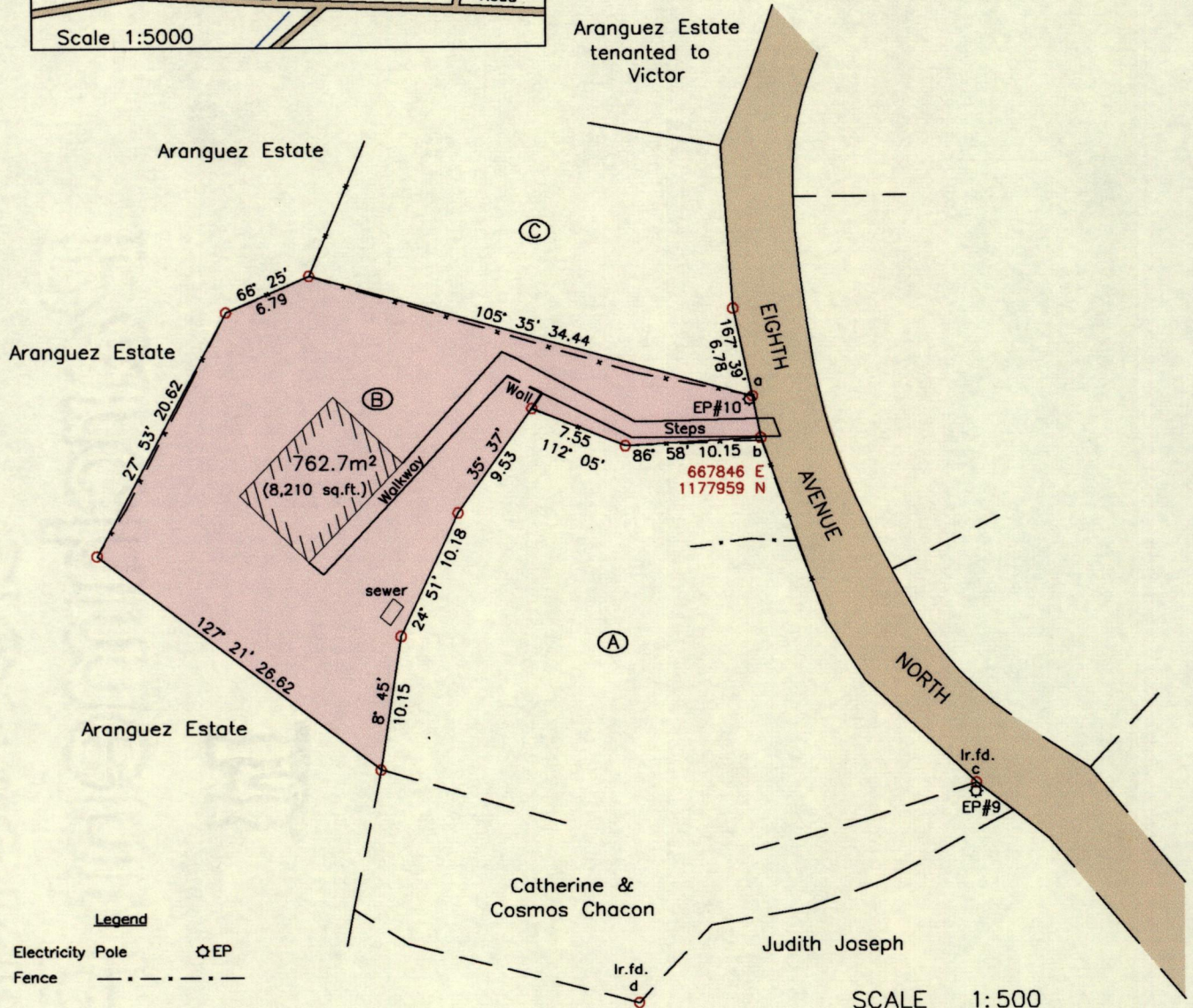
174

Barataria

Process JDT# 110815

From	To	Bearing	Distance
a	b	168° 44'	3.18
b	c	148° 21'	30.48
c	d	236° 52'	30.09

G N
U.T.M.

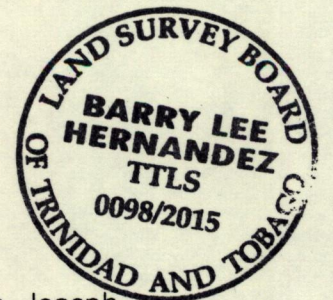


Legend
Electricity Pole \odot EP
Fence - - - - -

SCALE 1:500
Distances are in metres

Notes: \odot Denotes Ir.pt. unless otherwise stated
Bearings are U.T.M. Grid based on Solar Observations
Previous survey by Nasser Abdul in April 2002 for Judith Joseph
Coordinates obtained using handheld GPS (UTM Zone 20, Naparima \pm 5.0m)

PLAN of a parcel of land coloured pink in the Ward of St. Anns
Containing seven hundred and sixty two point seven square metres
Surveyed by me, with due authority, in February 2015 for Catherine Joseph
Certified Correct in accordance with Regulation 25(1) of the Land Surveyors Regulations 1998.



Checked by
Entered on

Barry Hernandez
Trinidad and Tobago Land Surveyor, 29th May 2015

