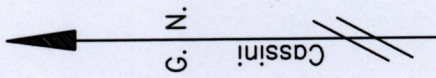


Cadastral Sheet B.22.B. 23B
 2/d
 Ward of St. Anns
 County of St. George

Vide : Bk.1057 Fol.45
 Bk.1210 Fol.208
 PLAN J.F. 256
 PLAN J.F. 264
 R.D. 18209/2000
 R.D. 1963/1972
 R.D. 670/1917
 R.D. 13129/1997

Process ID# 110810



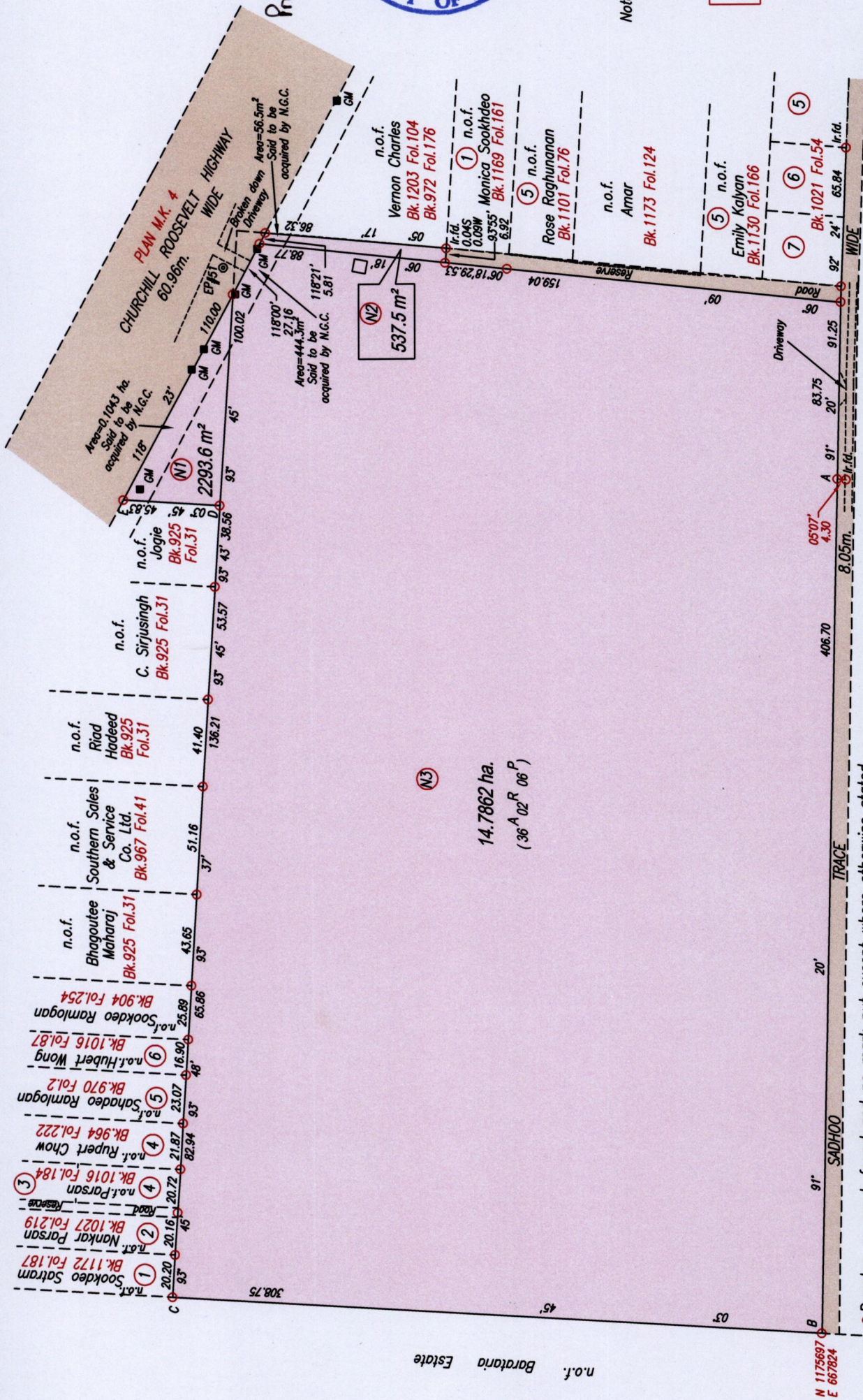
1561



Note: Boundary Lines A-B-C-D-E not surveyed.
 n. o. f. now or formerly
 Gas Line Marker
 GM
 Wall

Coordinates obtained by Hand Held GPS
 U.T.M. Naparima +/- 5m

SCALE 1:2500
 Distances are in metres



Prepared by me, with due authority, from surveys done by Ivan Laughlin in Dec. 1971, Nasser Abdul in Aug. 1991, Michael Awang in Oct. 1998 and July 1999, Arnold R. Fortune in July 2006 and myself in June 2015 at the request of Nara Development Ltd. 173
 Certified Correct in accordance with Regulation 25 (1) of the Land Surveyors Regulations 1998.

Checked by
 Entered on. 24th June 2015.

Bhaghirathi Maharaj

Trinidad & Tobago Land Surveyor.

MINISTRY OF FOOD PRODUCTION
 LAND AND MARINE AFFAIRS
 JUN 24 2015
 #344
 Lands & Surveys Division

○ Denotes no mark found and no mark put except where otherwise stated
 Bearings are Cassini grid based on solar Observations
 PLAN of 3 Parcels of land coloured pink in the Ward of St. Anns
 Containing together fifteen point zero six nine three hectares