

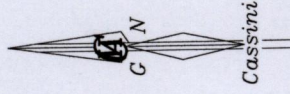
Cadastral Sheet B.22.B 23C
1/a

Ward of St. Anns

County of St. George

No.12 Bootan Trace Ext.

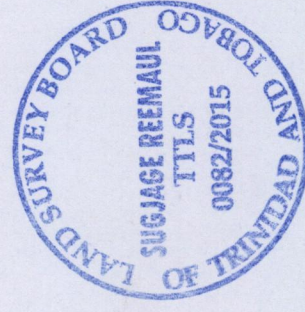
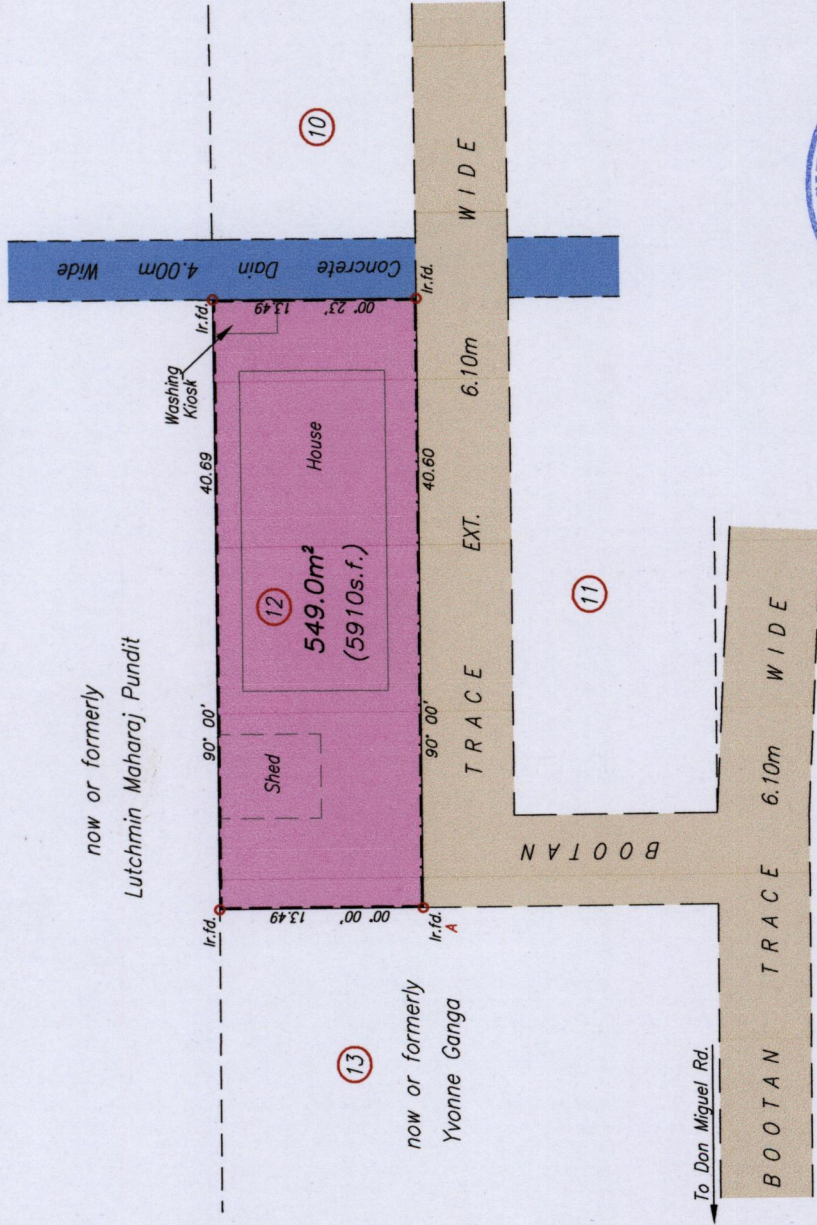
Don Miguel Rd, Barataria



--- Wall
- . - . - BRC Fence

SCALE 1/500

Distances are in metres



Process LS#110783

U.T.M.
N. 1175 982
E. 0668 658
Nap. Datum ± 5.0 m
Hand held G.P.S.

Bearings are Cassini Grid based on Solar Observations
Plan of a Parcel of land coloured pink in the Ward of St. Anns
Containing five four nine point zero square metres

Surveyed by me with due authority in June 2015 for Vishnu Narine
Certified Correct In accordance with Regulation 25 (1) of the Land Surveyors' Regulations 1998,

Entered On.....

Sugjage Reemaul

Trinidad & Tobago Land Surveyor. 18 June 2015