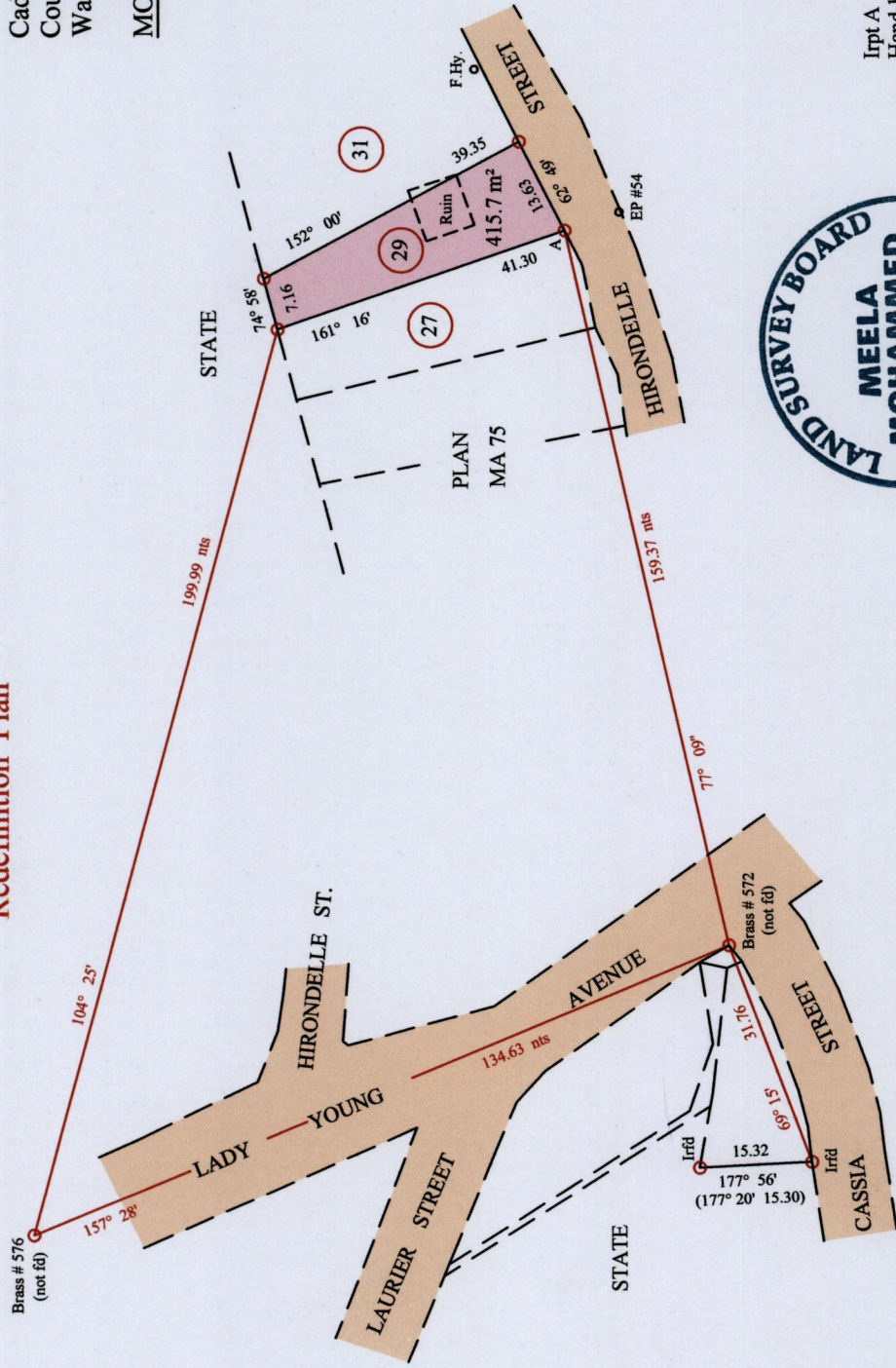


RD# DE 199016440034
 Refs.: BK 1252 Fol 138
 Plan MA 75
 Plan CM 19
 Plan PG 33
 Plan PG 36

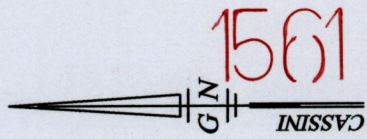
Process # 110634

Redefinition Plan



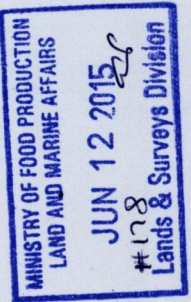
Cadastral Sheet B.17.1 & A.20.L, 13E
 County of St. George
 Ward of St. Ann's

MORVANT HOUSING SCHEME



Irpt A
 Hand-held GPS Coords.
 UTM Zone 20, Naparima 1955
 E 06666699 ± 5m
 N 1178036

○ denotes Iron put except otherwise stated
 Bearings are Cassini Grid based on Solar Obs.
 Distances are in Metres
 SCALE 1/1000



PLAN of a parcel of land coloured pink in the Ward of St. Ann's
 Comprising four one five point seven square metres
 Redefined by me, with due authority, in March 2015 for Charmaine Roberts.
 Certified correct in accordance with Regulation 25 (1) of the Land Surveyors' Regulations 1998.

Entered on
 Meela Mohammed
 Trinidad and Tobago Land Surveyor
 8th. June2015

151