

1561

149

ST. JAMES
(Lands of Jesse Henderson Co. Ltd.)

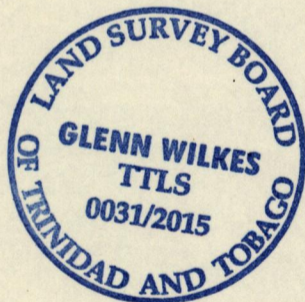
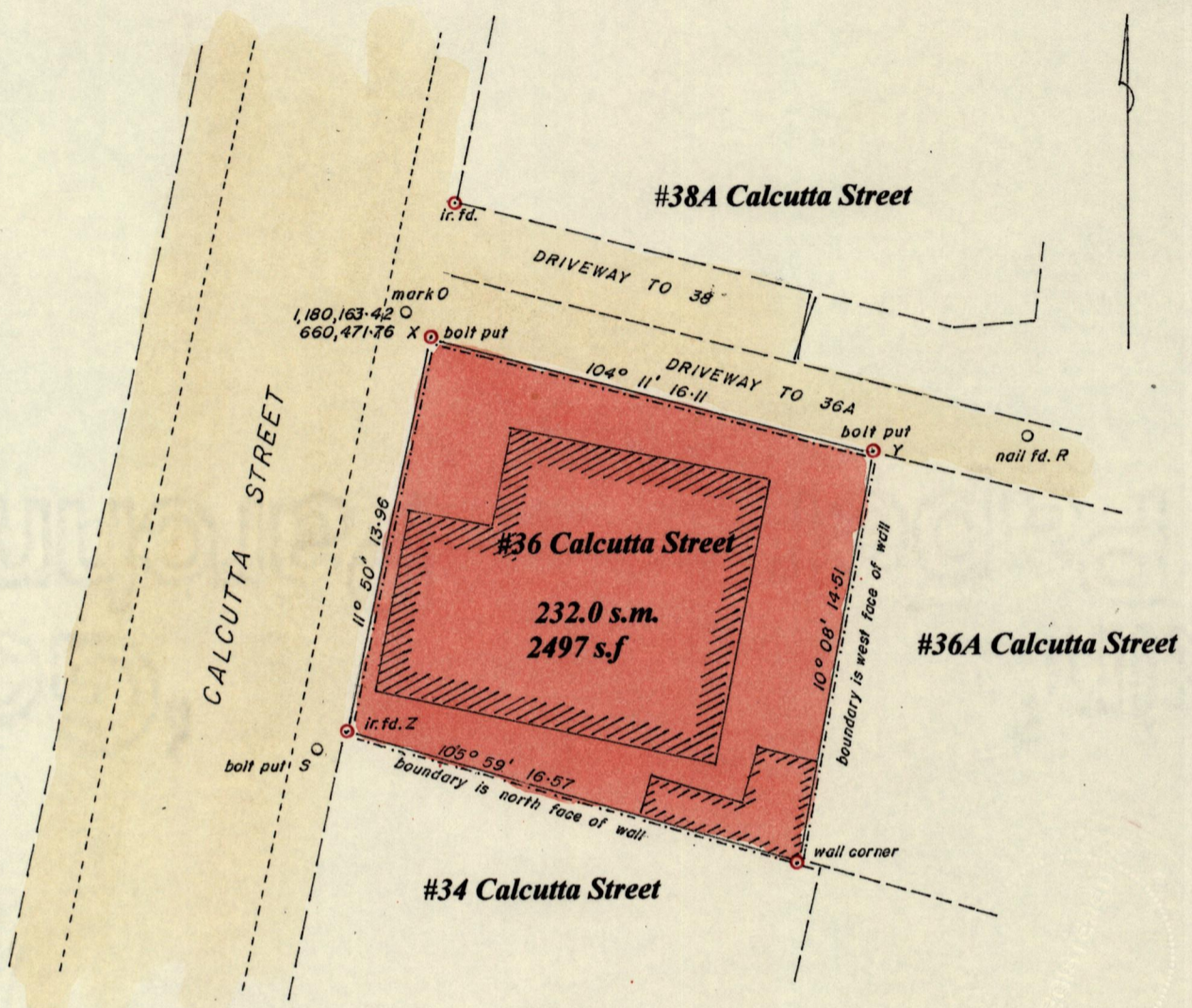
Cadastral Sheet A.20.E., 13D
4/a/1

City of Port of Spain

County of St. George

Process # 110629

U.T.M.
Grid North



TIES
 Traverse Station 13-025 to nail F 280° 15' 10" 208.61
 Nail F to bolt fd. E 191° 06' 45" 126.34
 Bolt fd. E to bolt put S 192° 38' 20" 47.07
 Bolt put S to mark O 11° 43' 40" 15.67
 Bolt put S to ir. fd. Z 54° 25' 1.33
 Mark O to ir. fd. 19° 57' 4.14
 Mark O to bolt put X 140° 06' 1.18
 Mark O to nail fd R 101° 10' 05" 22.32
 Nail fd. R to bolt put Y 264° 32' 5.55

SCALE 1/250

Distances are in metres

Bearings are U.T.M. Grid, based on solar observations. To obtain Cassini bearings add 18 minutes.
Co-ordinates are U.T.M. zone 20, Naparima '55 datum, based on Traverse Station 13-025,
N 1,180,280.85 E 660,708.65

PLAN of a parcel of land coloured pink in the City of Port of Spain, containing two hundred and thirty-two point zero square metres.

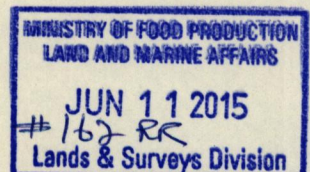
Surveyed by me with due authority in March 2015 for Sandra & Robert Tuitt.

In accordance with Regulation 25(1) of the Land Surveyors' Regulations 1998, I certify that this plan is correct.

Glenn Wilkes

Entered:

Glenn Wilkes
Trinidad & Tobago Land Surveyor
30th April 2015



698