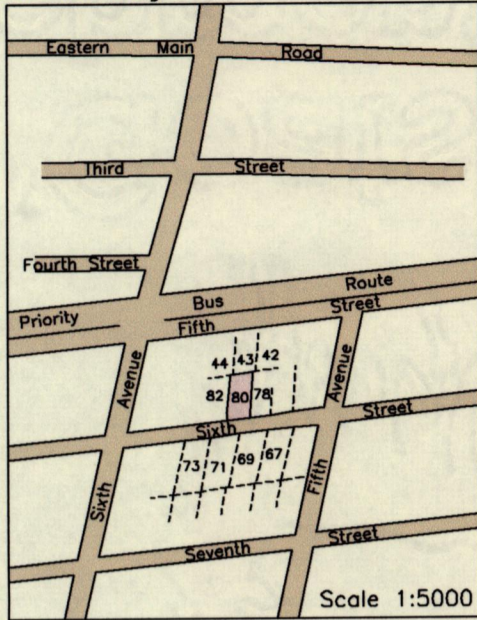


Location Diagram



Cadastral Sheet 2/b (B.17.M.)
Ward of St. Anns
County of St. George

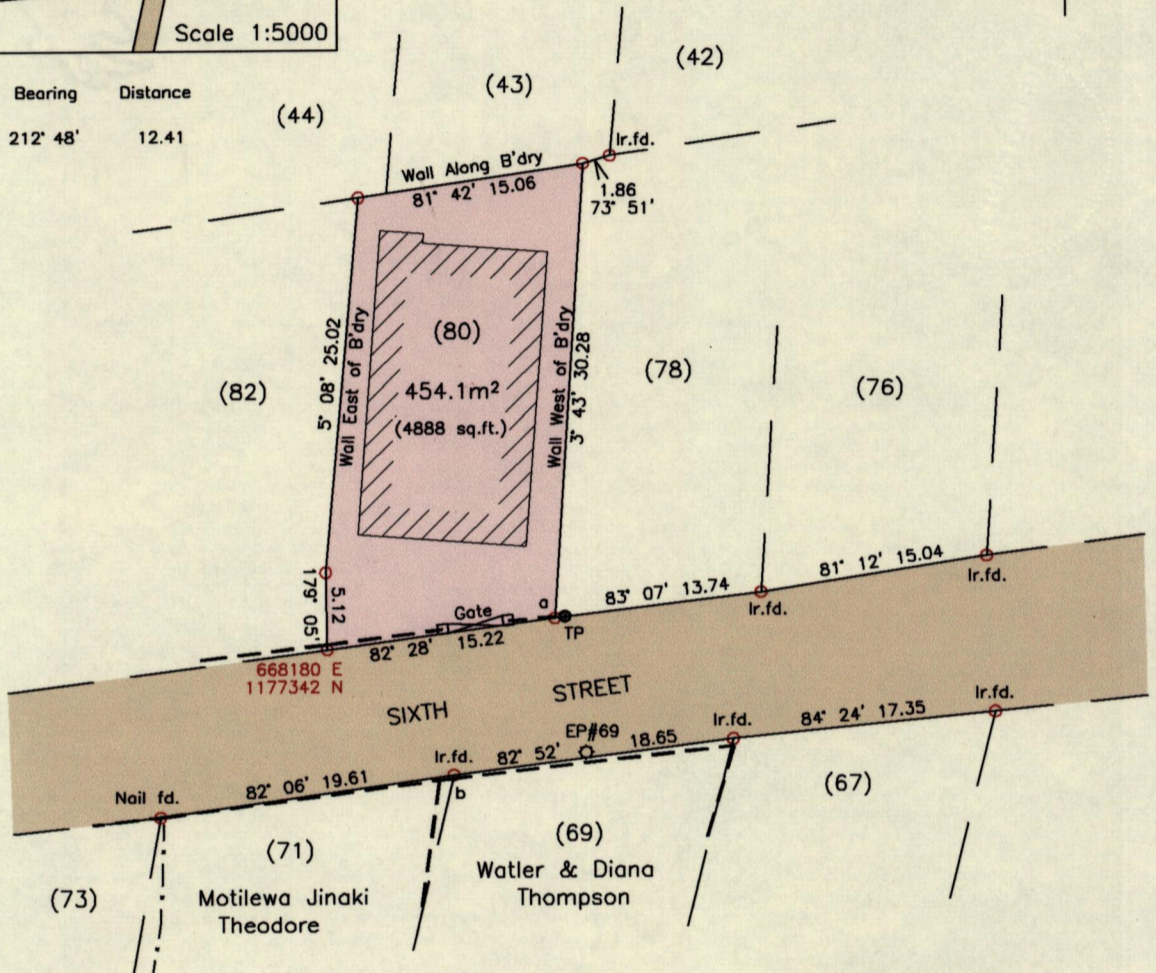
145

Barataria

Process ID# 110621

G N
U.T.M.

From	To	Bearing	Distance
a	b	212° 48'	12.41

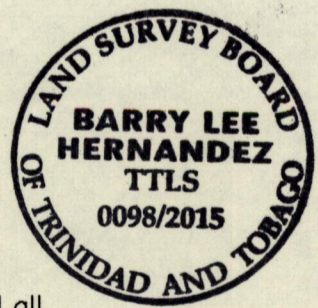


SCALE 1:500
Distances are in Metres

- Legend**
- Electricity Pole ◊ EP
 - Telephone Pole ● TP
 - Fence - - - - -
 - Wall - - - - -

Notes: ○ Denotes Ir.pt. unless otherwise indicated
Bearings are U.T.M. Grid based on Solar Observations
Coordinates obtained using handheld GPS (UTM Zone 20, Naparima ± 5.0m)

PLAN of a parcel of land coloured pink in the Ward of St. Anns
Containing four hundred and fifty four point one square metres
Surveyed by me, with due authority, in May 2015 for Trevor & Omah Lall
Certified Correct in accordance with Regulation 25(1) of the Land Surveyors Regulations 1998.



Checked by *Barry Hernandez*
Entered on Trinidad and Tobago Land Surveyor, *29th May 2015*

