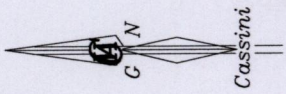


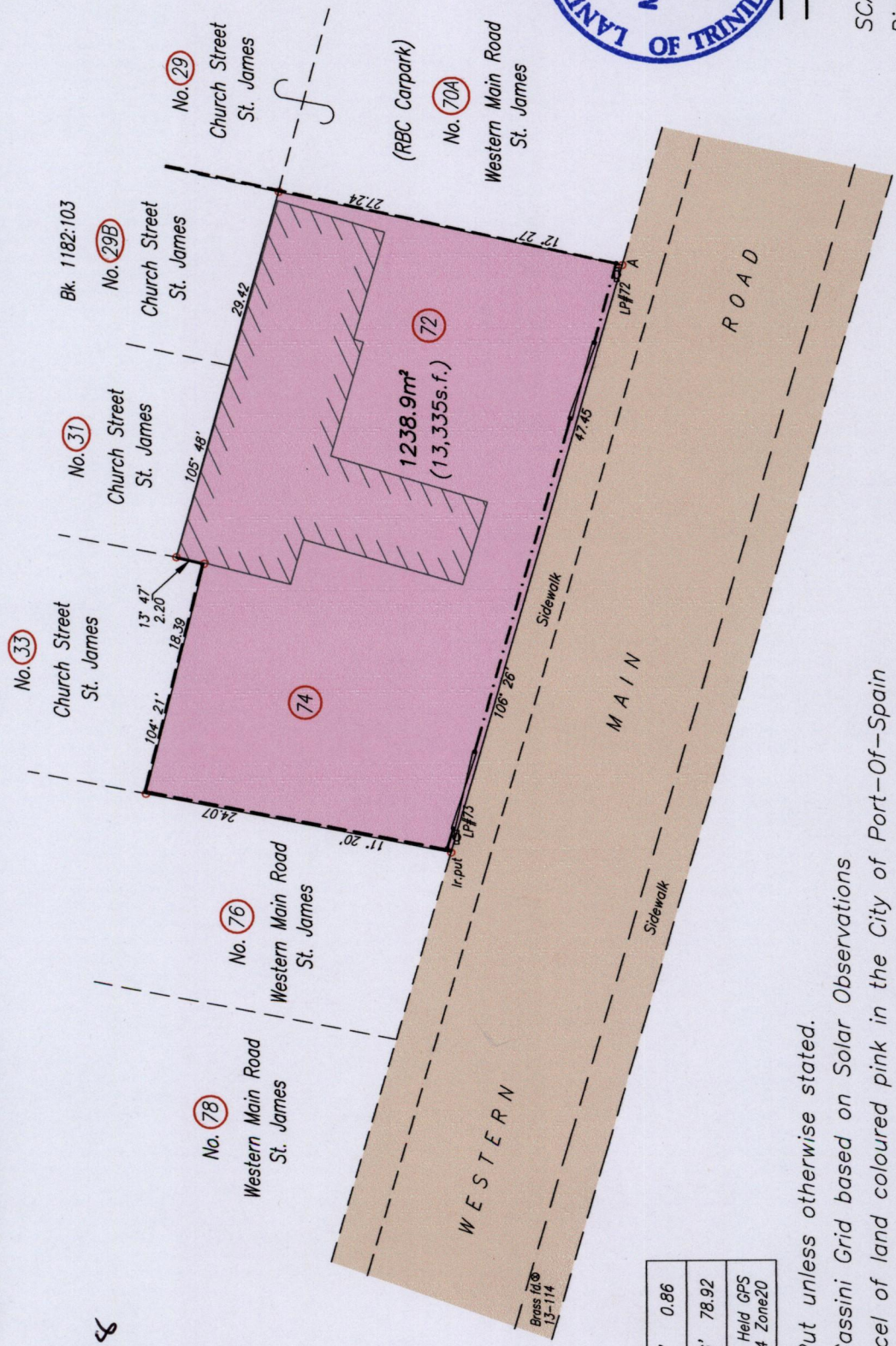
Cadastral Sheet A.20.E. 13D
3/b
City of Port-of-Spain
County of St. George

No. 72 & 74 Western Main Road,
St. James



--- Wire Fence

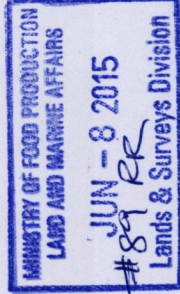
SCALE 1/500
Distances are in metres



A - LP#72	299° 23'	0.86
A - Brass	275° 06'	78.92
A	N. 1180 135 Hand Held GPS	
A	E. 0660 231 WGS84 Zone20	

o Denotes Nail Put unless otherwise stated.

Bearings are Cassini Grid based on Solar Observations
PLAN of a Parcel of land coloured pink in the City of Port-Of-Spain
Containing one two three eight point nine square metres
Surveyed by me, with due authority, in May 2015 for The National Lottery Board of Trinidad & Tobago
Certified Correct In accordance with Regulation 25 (1) of the Land Surveyors' Regulations 1998,



Nasser Abdul
Trinidad & Tobago Land Surveyor 8th June 2015

Entered on

R.D. DE 201200912360 D001

Process IS-110618