

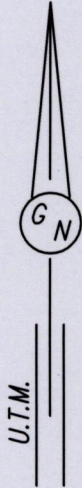
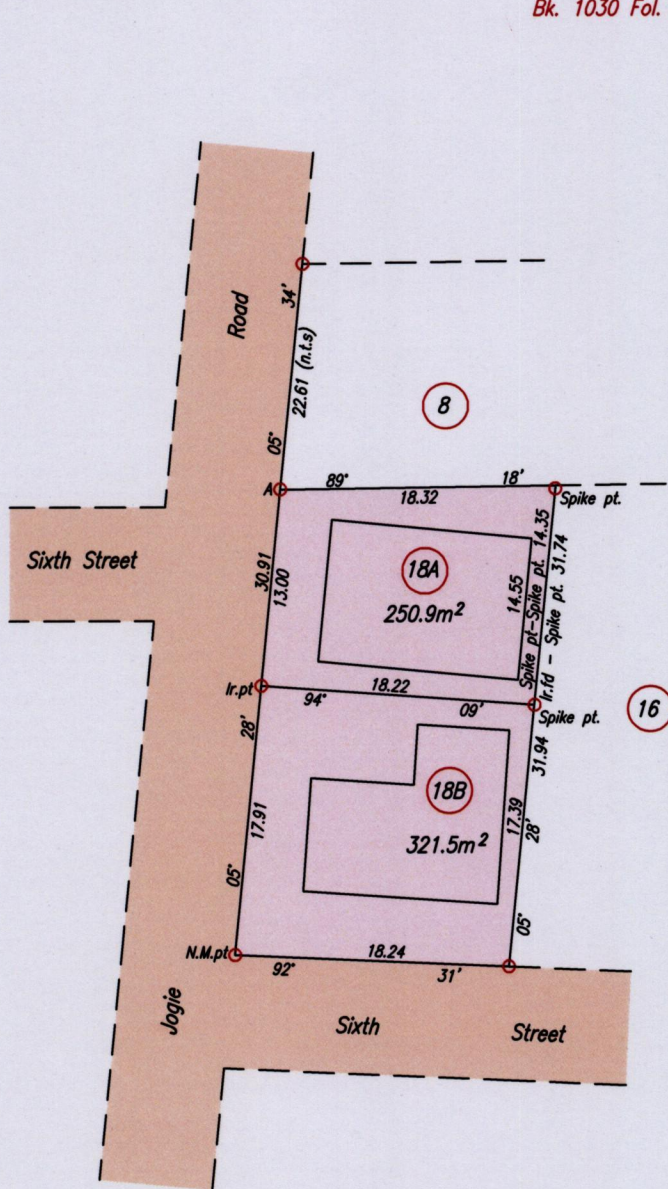
1561

141

U.R.P.N. . . . . .

Cadastral Sheet B.17.N. <sup>23B</sup>/<sub>2/b</sub>  
Ward of St. Ann's  
County of St. George  
Bk. 1030 Fol. 31

Process JD#110595



Point A

Co-ordinates obtained by Hand Held G.P.S. (Nap. Datum Zone 20)

Accuracy ± 3m

E 668794m

N 1177419m

SCALE 1/500

Distances are in metres

Note: To obtain Cassini bearing + 18 minutes

○ Denotes Iron found except otherwise stated

Bearings are U.T.M. Grid based on Solar Observations

Plan of 2 Parcels of land coloured pink in the Ward of St. Ann's

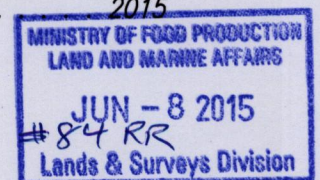
Containing together five hundred and seventy two point four square metres

Surveyed by me, with due authority, on 29th May 2015 for Samo Mano

Certified Correct in accordance with Regulation 25 (1) of the Land Surveyors' Regulations 1998

*Ganeshdath Ramcharitar*  
 5/16  
 Trinidad & Tobago Land Surveyor

Entered on. . . . .



49524P