

Process Jdt 110586

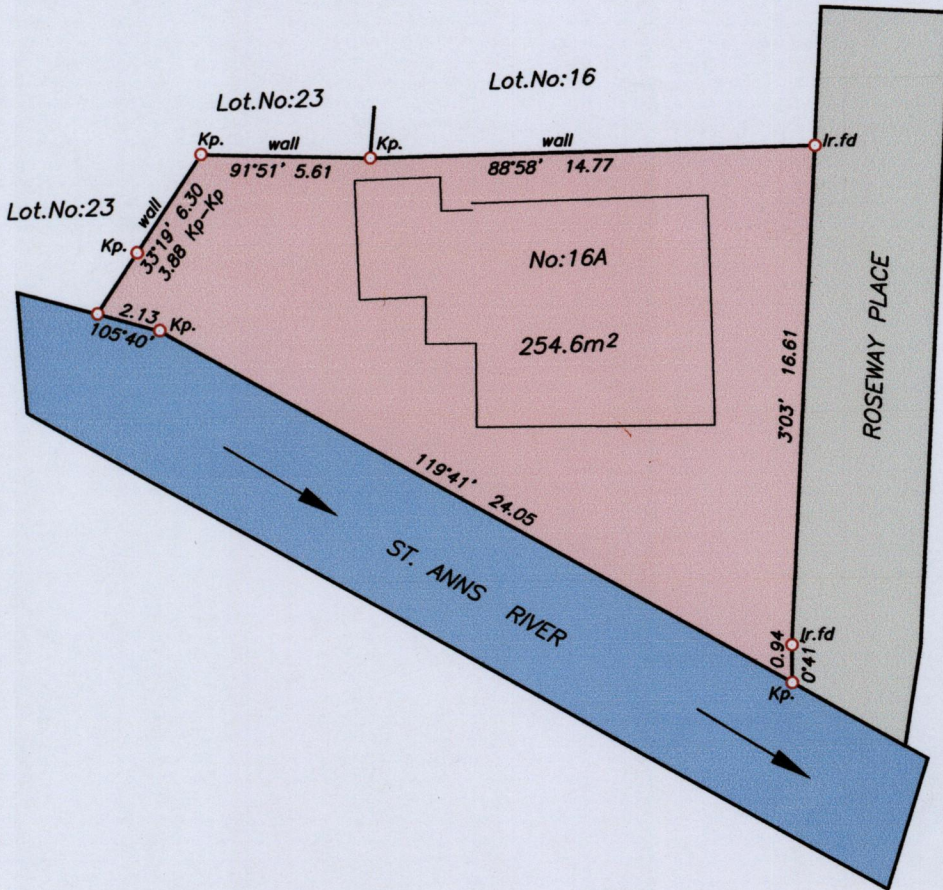
1561

City of Port of Spain

County of St. George

136

G N  
U.T.M.



○ denotes Ir.pt except otherwise stated  
 Co-ordinates are UTM zone 20N Naparima Datum +/-5m  
 Obtained from handheld GPS  
 Bearings are UTM grid based on Solar Observations  
 Note: To obtain compass bearings add 18 minutes.

See Plan EC 197

SCALE 1/250

Distances are in metres

PLAN of a Parcel of land coloured pink in the City of Port of Spain  
 Containing two five four point six square metres  
 Surveyed by me, with due authority, in

for His Grace The Roman Catholic Archbishop Of Port Of Spain  
 Certified correct n accordance with Regulation 25 (1)  
 of the Land Surveyors Regulations 1998.

Checked by.....

*Leslie Akum-Lum*

Entered..... Trinidad & Tobago Land Surveyor..... 25/5/15

LAL\Plans\R\RCA\RCA Roseway Belmont 2015

