

1561

133

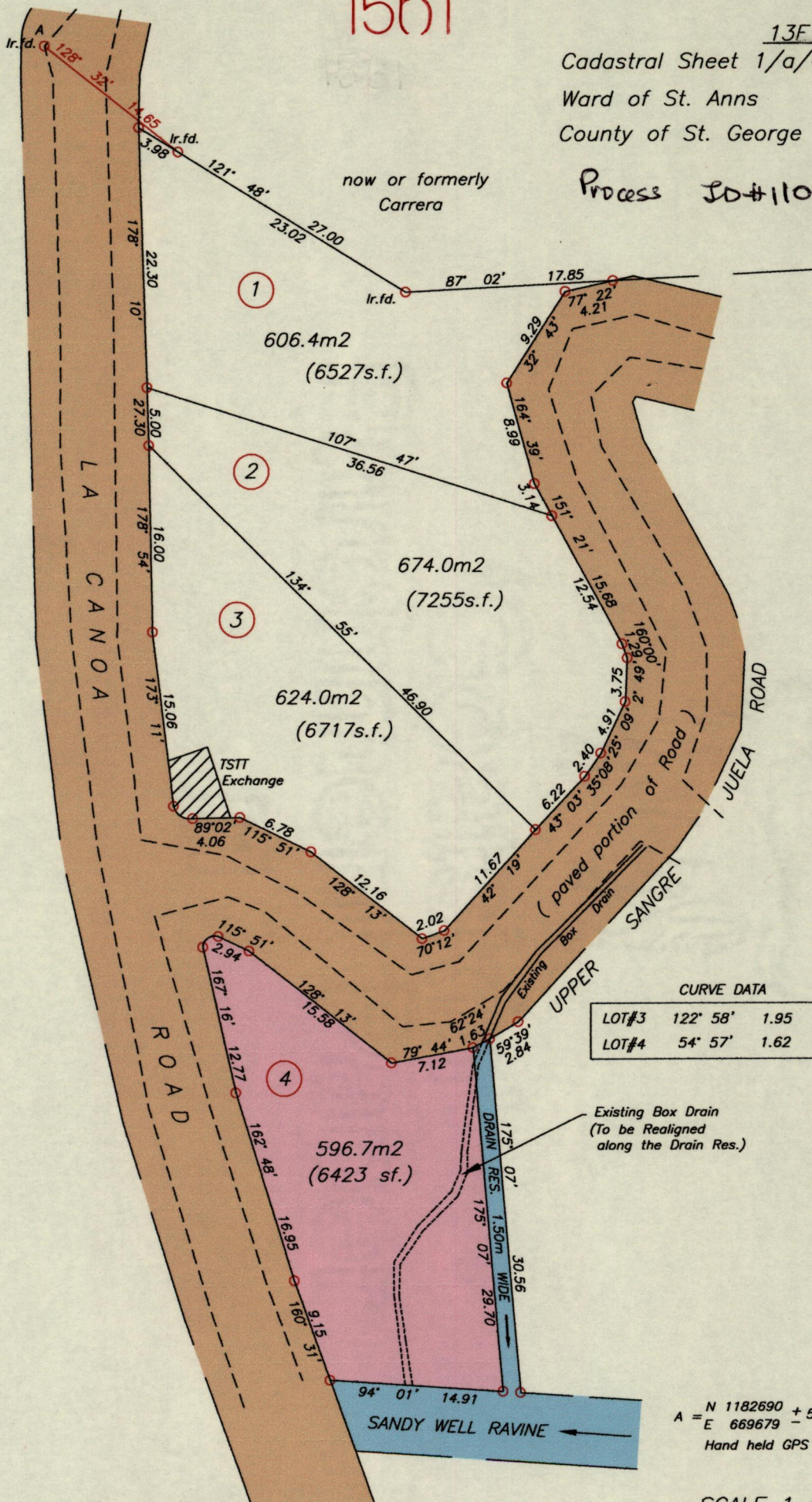
13F

Cadastral Sheet 1/a/4 (B.12.N.)

Ward of St. Anns

County of St. George

Process ID#110579



G N Cassini

CURVE DATA			
LOT#3	122° 58'	1.95	R=1.5
LOT#4	54° 57'	1.62	R=1.0

A = N 1182690 ± 5.0m (UTM)  
 E 669679 ± 5.0m (UTM)  
 Hand held GPS

○ Denotes Iron put unless otherwise stated  
 Bearings are based on Solar observations

SCALE 1 : 500  
 Distances are in metres

PLAN of a Parcel of land coloured pink in the Ward of St. Anns  
 Containing five hundred and ninety six point seven square metres.  
 Surveyed by me, with due authority, in April 2008 for W. Mootoo  
 Certified Correct in accordance with Regulation 25 (1) of the Land Surveyors' Regulations 1998,

Checked by .....

*[Signature]*  
 Trinidad & Tobago Land Surveyor (TTLS)

Entered on .....

28 May 2015

