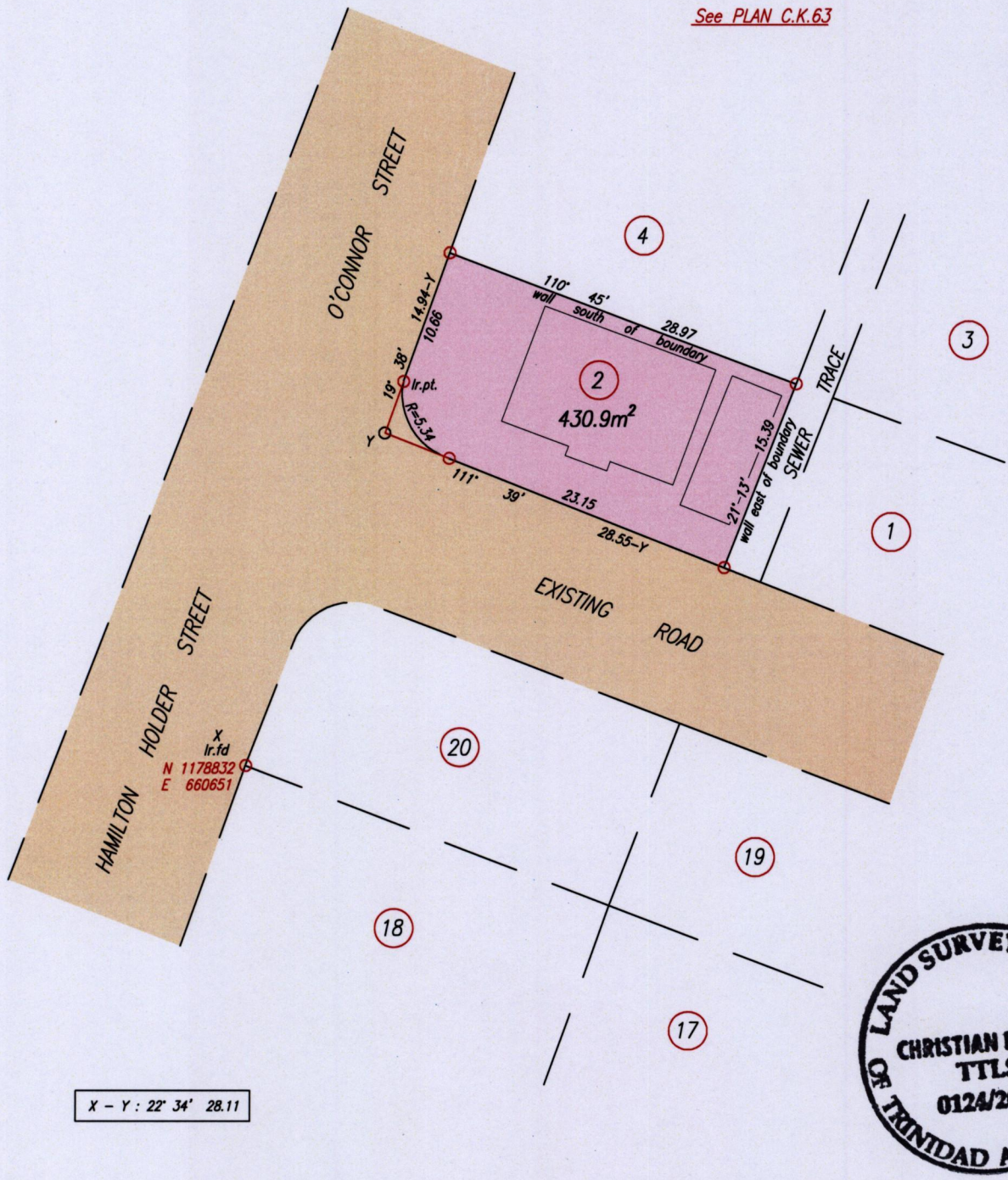


Process ~~LD#~~ 109640

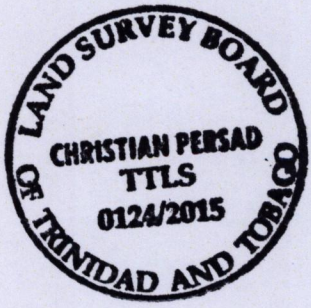
Cadastral Sheet  $\frac{13D\&23A}{4/c}$  (A.20.1)  
City of Port of Spain  
County of St. George

#2, O'Connor Street, Woodbrook

See PLAN C.K.63



X - Y : 22° 34' 28.11



○ Denotes No Mark  
○ Denotes Nail Put except where stated otherwise  
Co-ordinates are Naparima/UTM, derived using handheld GPS (+/-5m)  
Bearings are Cassini Grid based on Solar Observations

SCALE 1:500  
Distances are in metres

PLAN of a parcel of land coloured pink in the City of Port of Spain  
Containing four hundred and thirty point nine square metres  
Surveyed by me with due authority, on May 26th 2015, at the request of NWT Enterprises Ltd.  
Certified Correct in accordance with Regulation 25 (1) of the Land Surveyors Regulations 1998

Checked by . . . . .  
Entered on . . . . .  
*Christian Persad*  
Trinidad & Tobago Land Surveyor. . . . . 26/05/2015.

MINISTRY OF FOOD PRODUCTION  
LAND AND MARINE AFFAIRS  
MAY 29 2015  
#356  
Lands & Surveys Division