

1501

123

13E

Cadastral Sheet 3/a/3 A.20.G.

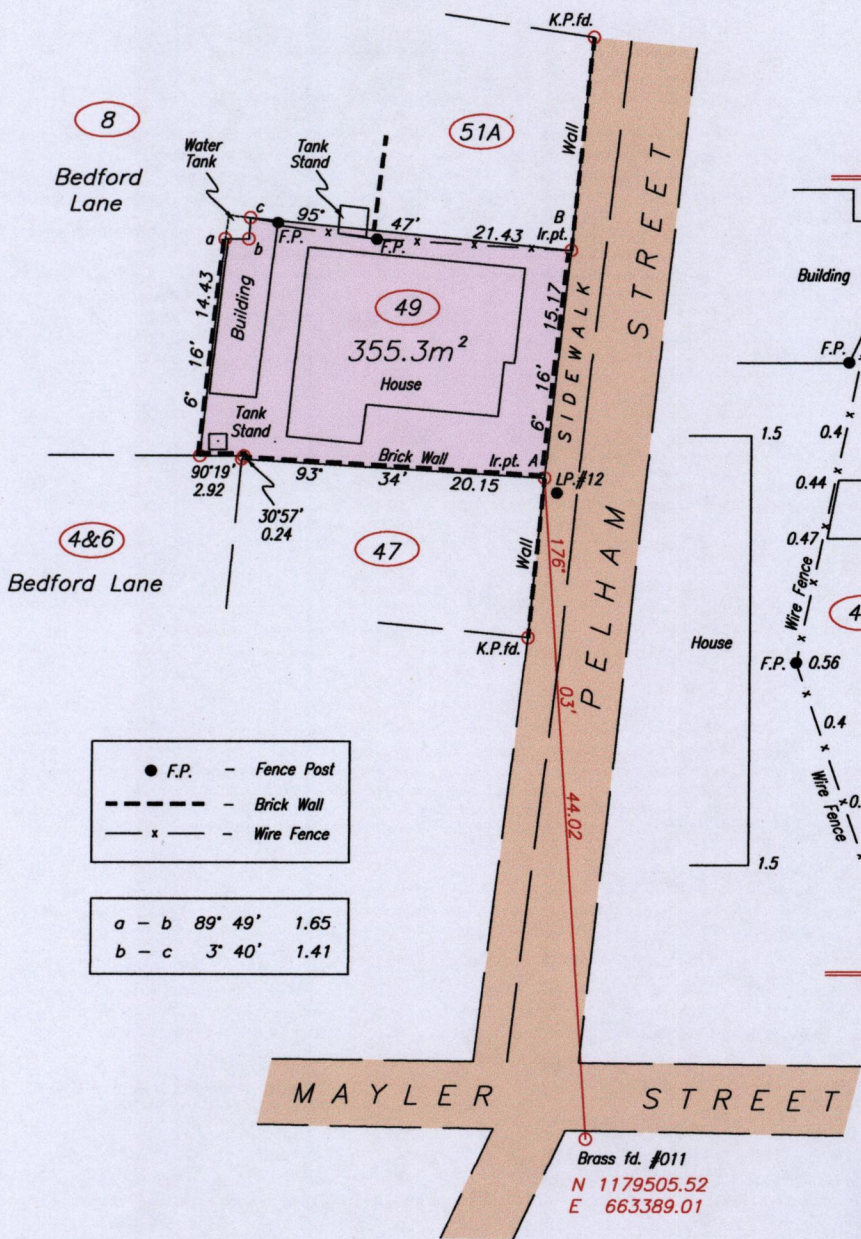
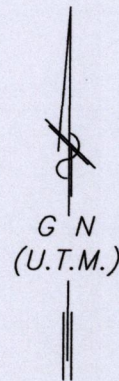
City of Port of Spain

County of St. George

Reference:

Deed No.19039/1988

Process ID# 109624

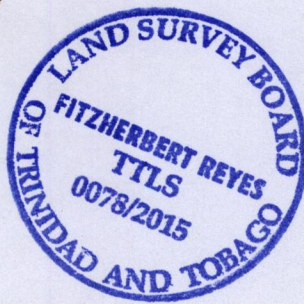
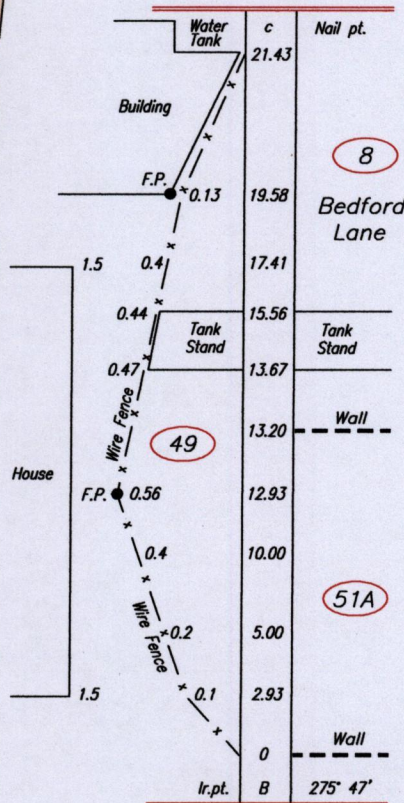


● F.P. - Fence Post  
 --- Brick Wall  
 - x - Wire Fence

a - b 89° 49' 1.65  
 b - c 3° 40' 1.41

A = N 1179549.44  
 E 663385.97  
 Port of Spain Controls

NOTES



SCALE 1:500

Distances are in METRES

○ Denotes Nail put unless otherwise stated  
Bearings are based on Solar observations

PLAN of a Parcel of land coloured pink in the City of Port of Spain  
Containing three hundred and fifty five point three square metres  
Surveyed by me, with due authority, in April 2015 for Earl Wilson  
Certified correct in accordance with Regulation 25 (1) of the Land Surveyors Regulations 1998.

*J.A. Reyes* T.T.L.S.

Entered on ..... Trinidad & Tobago ..... 15 May 2015  
Land Surveyor

