

1561

121

Cadastral Sheet B.17.0.  $\frac{23C}{1/b}$

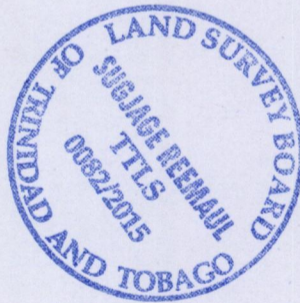
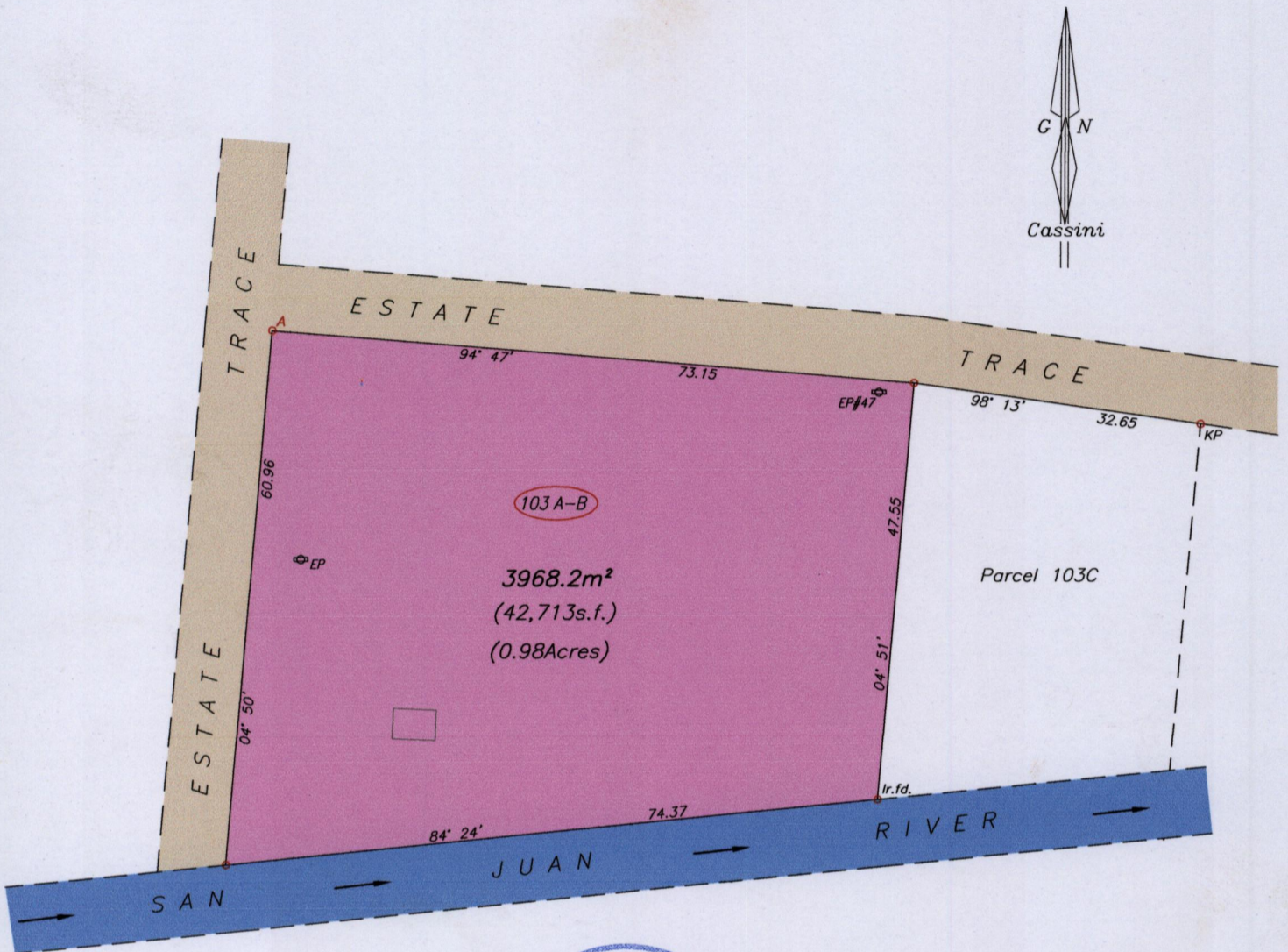
Ward of St. Anns

County of St. George

Process ID# 109614

Field 103 Parcel 103A-B Aranzuez Estate

MT. Lambert



A - LP#47 95° 54' 69.29

SCALE 1/750  
Distances are in metres

U.T.M.

A	N.	1176 800
	E.	0670 894

Nap. Datum ± 5.0 m  
Hand held G.P.S.

○ Denotes Iron Put unless otherwise stated

Bearings are Cassini Grid based on Solar Observations

Plan of a Parcel of land coloured pink in the Ward of St. Anns  
Containing three nine six eight point two square metres.

Surveyed by me, with due authority, in May 2015 for Johnny Quan

Certified Correct In accordance with Regulation 25 (1) of the Land Surveyors' Regulations 1998,

*Sugjage Reemaul*  
Trinidad & Tobago Land Surveyor 20<sup>th</sup> May, 2015

Entered On.....

