

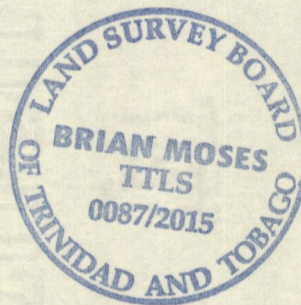
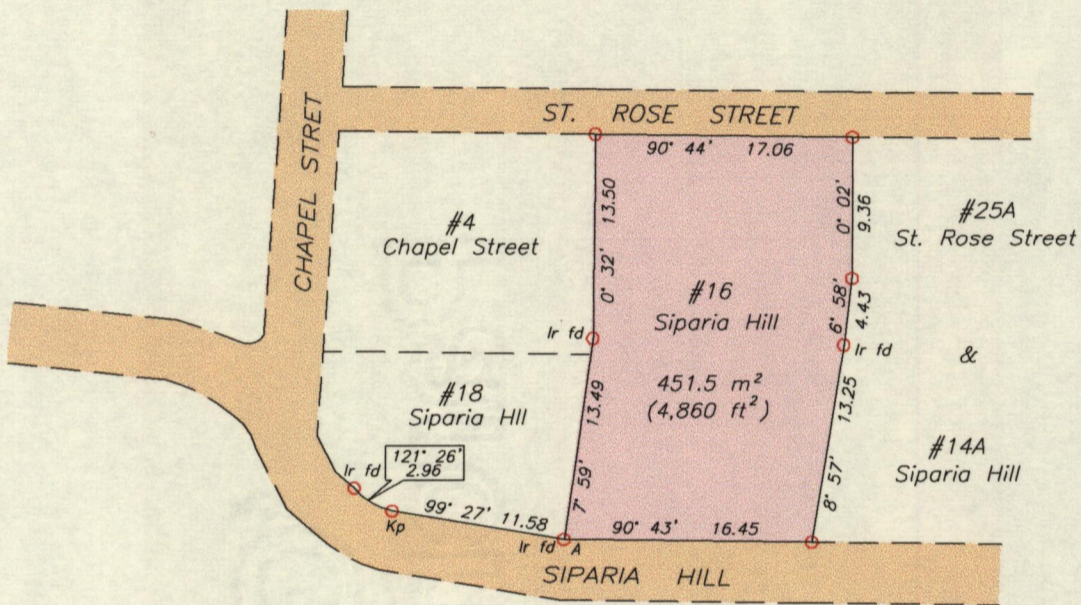
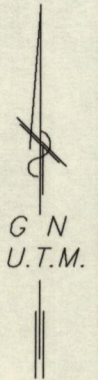
1561

116

Process ID # 109655

Cadastral Sheet  $\frac{13E}{3/c}$   
City of Port of Spain  
County of St. George

EAST DRY RIVER



A - N 1178562  
E 663460  
Derived From Hand-Held GPS (+/-5 m)  
UTM Zone 20 WGS84

SCALE 1:500  
Distances are in METRES

- Denotes Iron put unless otherwise stated
- Bearings are U.T.M. Grid based on Solar observations

PLAN of a parcel of land coloured pink in the City of Port of Spain  
Containing four hundred and fifty-one point five square metres  
Surveyed by me, with due authority, in May, 2015 at the request of Rashidi Wilson  
Certified Correct in accordance with Regulation 25 (1) of the Land Surveyors'  
Regulations 1998.

Checked by .....

Entered on .....

*Brian Moses*

Trinidad & Tobago Land Surveyor (T.T.L.S.)

15<sup>th</sup> May

2015

