

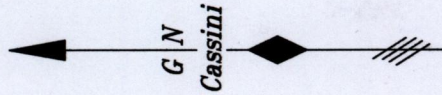
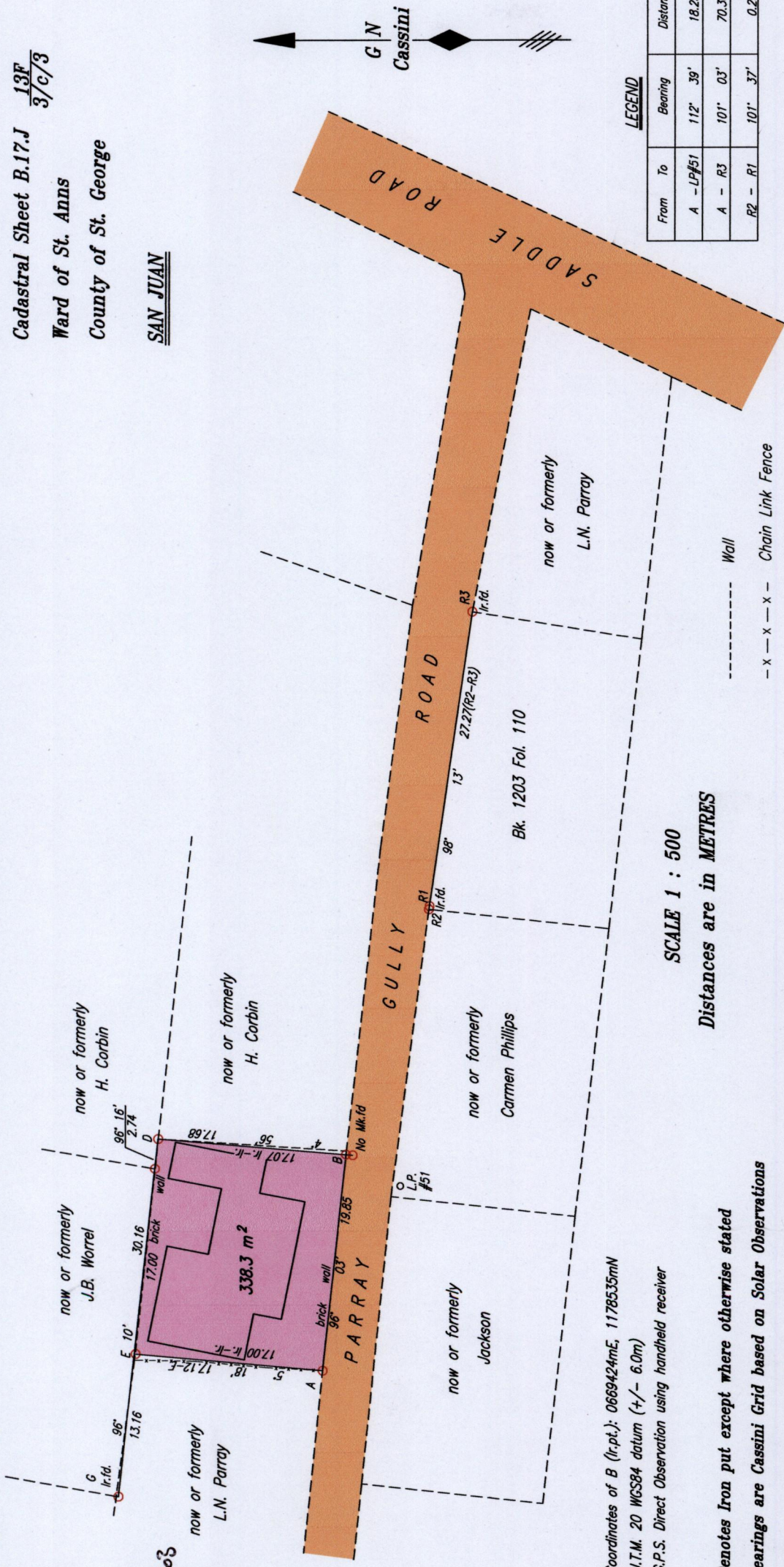
Cadastral Sheet B.17.J ^{13F}/_{3/c/3}

Ward of St. Anns
County of St. George

SAN JUAN

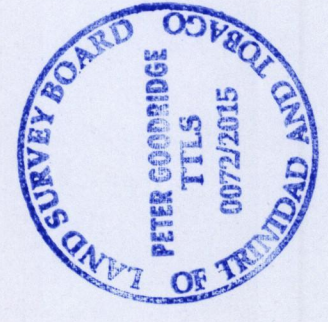
1561

115



LEGEND

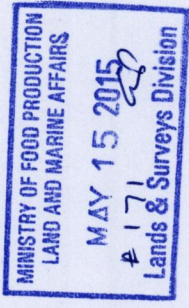
| From | To | Bearing | Distance |
|------|--------|----------|----------|
| A | -LP#51 | 112° 39' | 18.25 |
| A | -R3 | 101° 03' | 70.30 |
| R2 | -R1 | 101° 37' | 0.29 |



SCALE 1 : 500
Distances are in METRES

--- x --- x --- Chain Link Fence
----- Wall

References See Plan X.A.29
Bk. 1021 Fol. 194



PLAN of a Parcel of land coloured pink in the Ward of St. Anns
Containing three hundred and thirty-eight point three square metres
Surveyed by me, with due authority, in April 2015 for Rennie Jagassar
Certified Correct in accordance with Regulation 25 (1) of The Land Surveyors' Regulations 1998,

Entered

.....TTLS
[Signature]

Trinidad & Tobago Land Surveyor
G:\LESS 2012\TRINIDAD\SMAC,JUDITH BOUSOUNG.dwg
15. 2015
FILE NO: 1004

Process JIS# 109463

Coordinates of B (I.r.pt.): 0669424mE, 1178535mN
U.T.M. 20 WGS84 datum (+/- 6.0m)
G.P.S. Direct Observation using handheld receiver

○ Denotes Iron put except where otherwise stated
Bearings are Cassini Grid based on Solar Observations