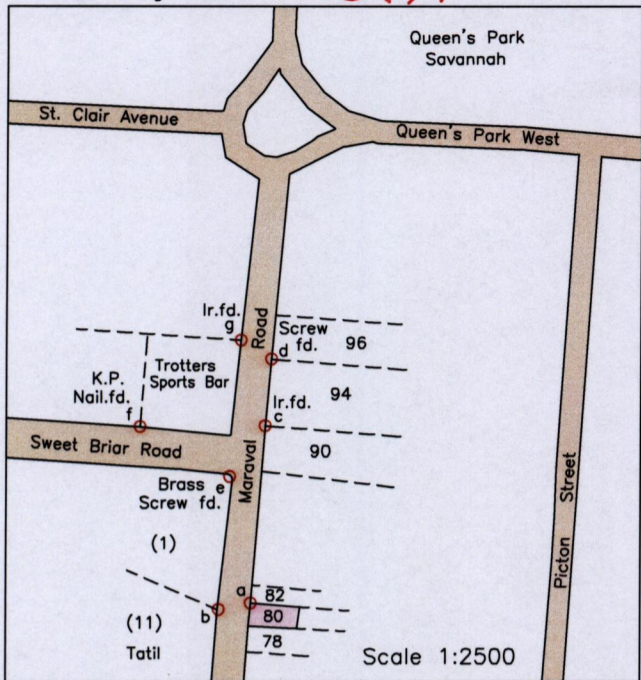


1561

113

Location Diagram



13D&23A

Cadastral Sheet 4/d (A.20.F.)

City of Port of Spain

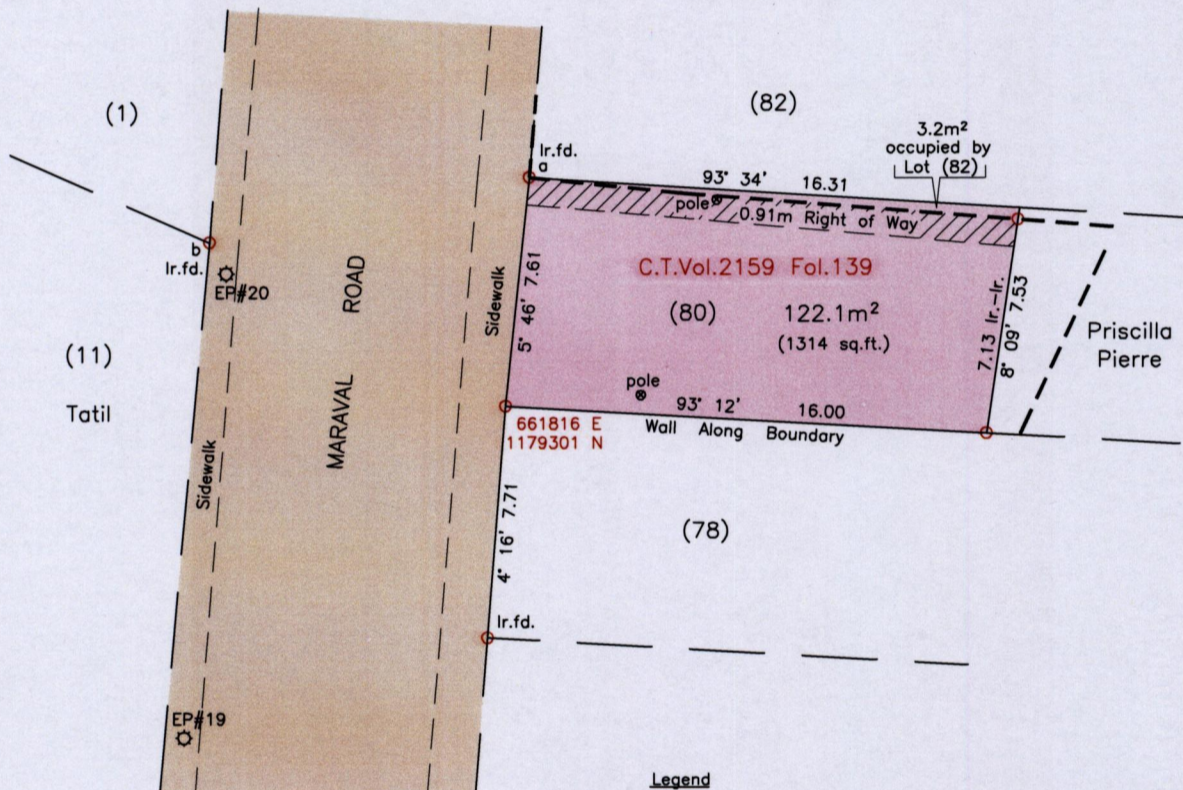
County of St. George

Newtown

Process ID# 109651

G N U.T.M.

From	To	Bearing	Distance
a	b	258° 22'	10.79
a	c	4° 31'	58.81
c	d	5° 12'	22.42
e	c	34° 21'	20.17
e	g	4° 10'	45.00
e	f	298° 22'	34.06
b	e	4° 57'	44.32



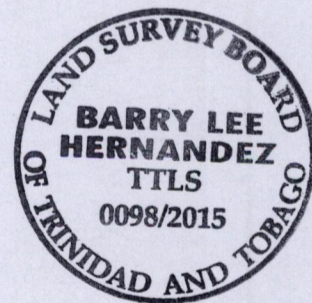
Legend

Electricity Pole    ⚡ EP  
 Wall    - - - - -

SCALE 1:250  
 Distances are in metres

Reference:  
 Bk.1251 Fol.162  
 C.T.Vol.3504 Fol.129  
 Memo. of Transfer Vol.2516 Fol.295

Notes: ⚡ Denotes Ir.pt. unless otherwise stated  
 Bearings are U.T.M. Grid based on Solar Observations  
 Coordinates obtained using handheld GPS (UTM Zone 20, Naparima ± 5.0m)



PLAN of a parcel of land coloured pink in the City of Port of Spain  
 Containing one hundred and twenty two point one square metres  
 Surveyed by me, with due authority, in May 2015 for Once Upon A Plate Limited  
 Certified Correct in accordance with Regulation 25(1) of the Land Surveyors Regulations 1998.

Checked by ..... *Barry Lee Hernandez* .....  
 Entered on ..... Trinidad and Tobago Land Surveyor, 14<sup>th</sup> May 2015.

