

1561

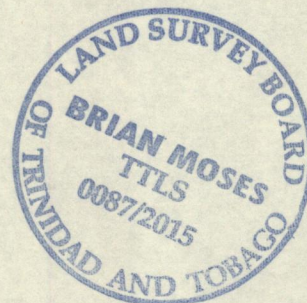
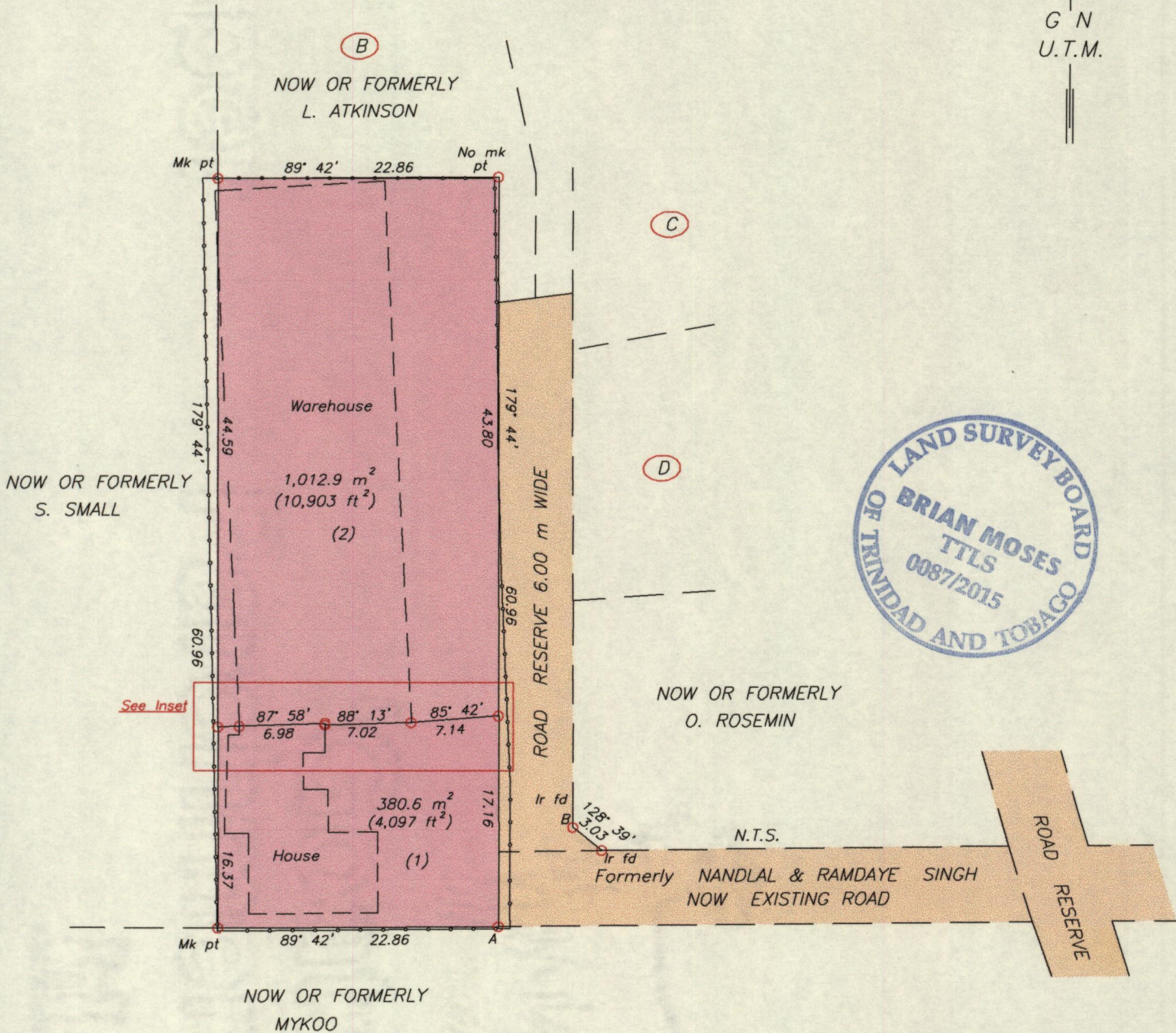
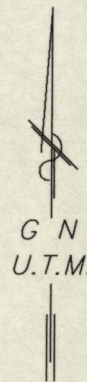
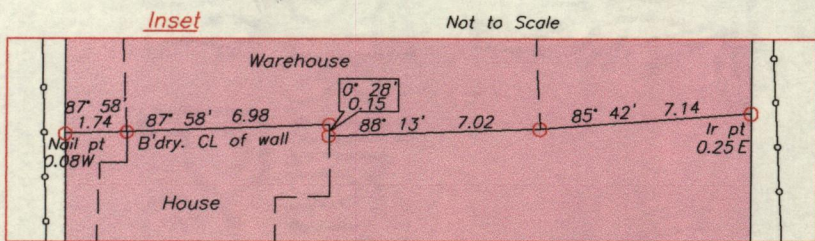
111

Cadastral Sheet B.17.J. ^{23C}/_{1/a}

Ward of St. Anns

County of St. George

Process ID #109639



See Inset

Legend

A - B 36° 40' 10.11

Ref.

Plan attached to R.D. 14866 of 1960
Bk. 1212 Fol. 86

A - N 1178138
E 669300

Derived From Hand-Held GPS (+/-5 m)
UTM Zone 20 WGS 84

SCALE 1:500

Distances are in METRES

- Denotes Nail put unless otherwise stated
- Bearings are U.T.M. Grid based on Solar observations

PLAN of two parcels of land coloured pink in the Ward of St. Anns
Containing together one three nine three point five square metres
Surveyed by me, with due authority, in April, 2015 for (1) Margaret Scott Singh &
(2) Rosalie Thomas
Certified Correct in accordance with Regulation 25 (1) of the Land Surveyors'
Regulations 1998.

Checked by

Entered on

Brian Moses
Trinidad & Tobago Land Surveyor (T.T.L.S.)
13th May 2015

