

1561

1009

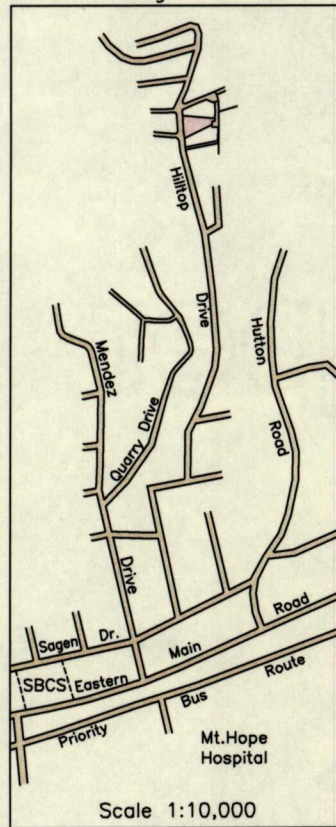
13F

Cadastral Sheet 4/c B.17.L.  
Ward of St. Anns  
County of St. George

Champs Fleurs

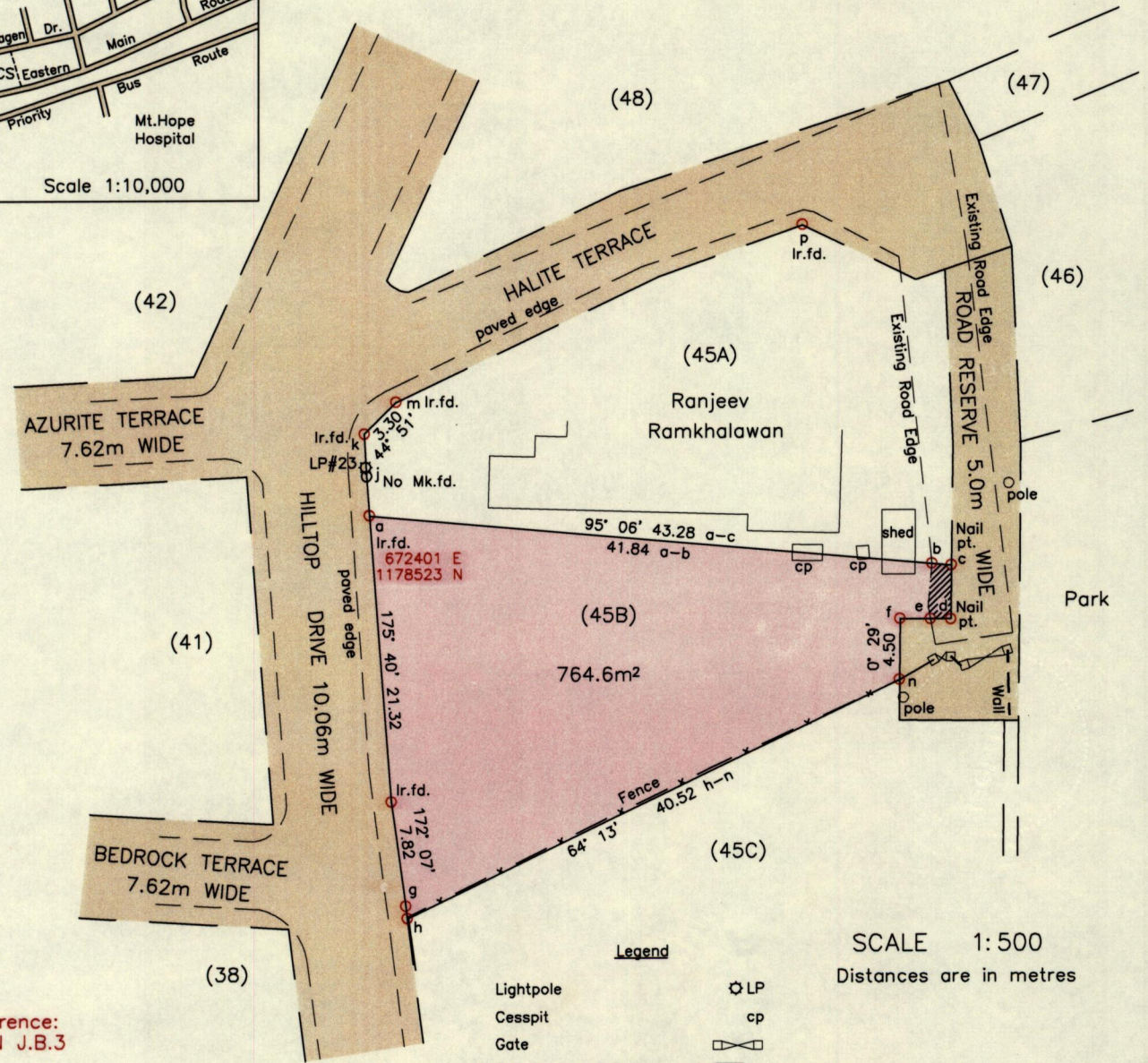
Process ID# 109632

Location Diagram



From	To	Bearing	Distance
c	d	180° 29'	3.98
d	e	270° 29'	1.51
e	f	270° 29'	2.24
h	g	352° 45'	0.92
k	j	177° 14'	3.14
j	a	175° 45'	2.93
m	p	66° 40'	32.87

G N  
U.T.M.



Reference:  
PLAN J.B.3

- Notes:
- Denotes Ir.pt. unless otherwise stated
  - Bearings are U.T.M. Grid based on Solar Observations
  - Previous survey by Aldwyn Aqiu in March 1997
  - Coordinates obtained using handheld GPS (UTM Zone 20, Naparima ± 5.0m)

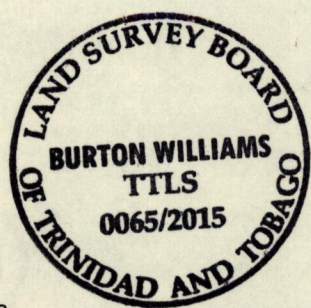
Legend

- Lightpole (LP symbol)
- Cesspit (cp symbol)
- Gate (gate symbol)
- 6.4m² occupied by Existing Road (hatched symbol)

SCALE 1:500  
Distances are in metres

PLAN of a parcel of land coloured pink in the Ward of St. Anns  
Containing seven hundred and sixty four point six square metres  
Surveyed by me, with due authority, in April 2015 for Raveed Khan

Certified Correct in accordance with Regulation 25(1) of the Land Surveyors Regulations 1998.



Entered  
Checked by  
MINISTRY OF FOOD PRODUCTION  
LAND AND MARINE AFFAIRS  
Entered on  
MAY 11 2015  
#131  
Lands & Surveys Division

*Burton Williams*  
Trinidad and Tobago Land Surveyor,.....

6/5/2015