

1561

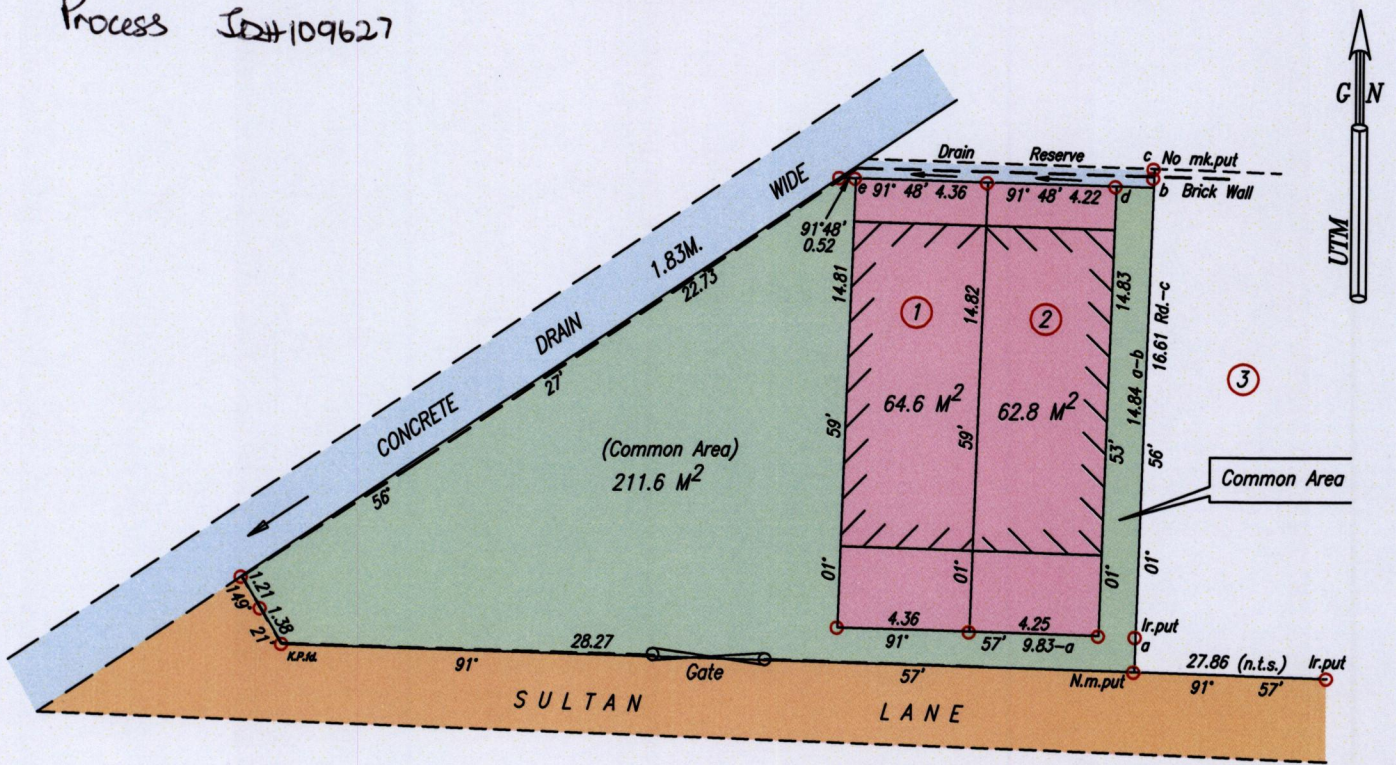
Ward of St. Anns 1088
County of St. George
Cadastral Sheet B.17.N. 23C
1/a

See Deed No. 8657/1946
Plan R.E.22

INSET

"EL SOCORRO"

Process ID#109627

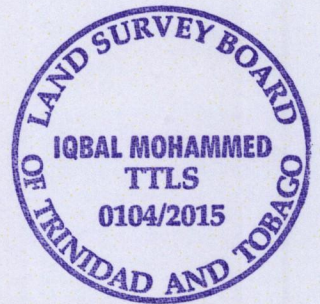
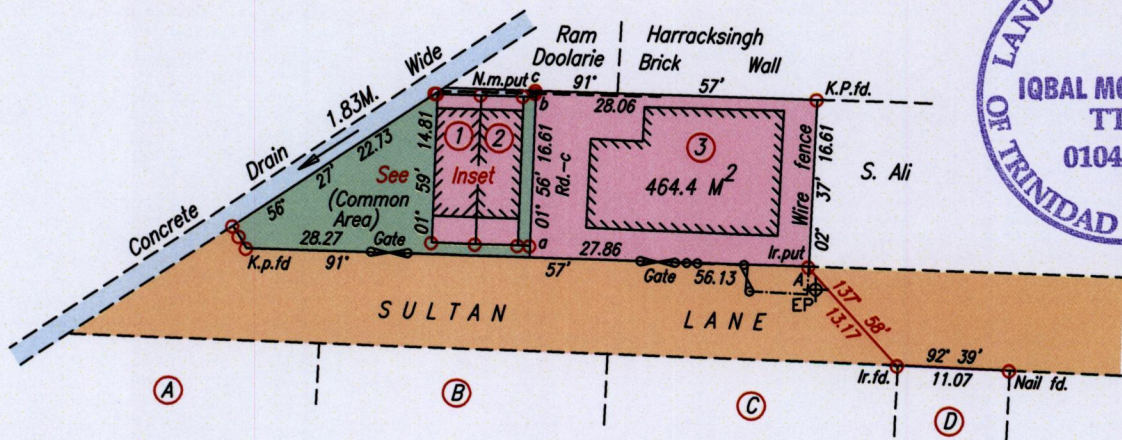


b - c 01° 56' 0.32
b - d 271° 48' 1.23

SCALE 1/250

Distances are in metres

--- Brick Wall



--- Fence
--- Brick Wall
Gate

o Denotes Spike put except otherwise stated

SCALE 1/750

Distances are in metres

Bearings are UTM Grid based on Solar Observations

To obtain Cassini bearings, add 18 minutes

PLAN of three Parcels of land coloured pink and
a Common area coloured green in the Ward of St. Anns

Containing together, eight hundred and three point four square metres
Surveyed by me with due authority, on May 3rd, 2015 for Iqbal Hosein

Certified Correct in accordance with Regulation 25 (1) of The Land Surveyors' Regulations 1998,

Entered on

Iqbal Hosein

Trinidad & Tobago Land Surveyor (T.T.L.S)

11/51

216P + 3LP

Iron A
669026 mE, 1176764 mN
U.T.M. 20, Nap. (+/- 3m.)
G.P.S. (Handheld)

