

1561

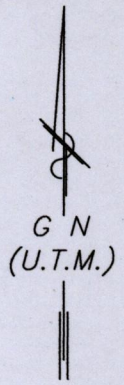
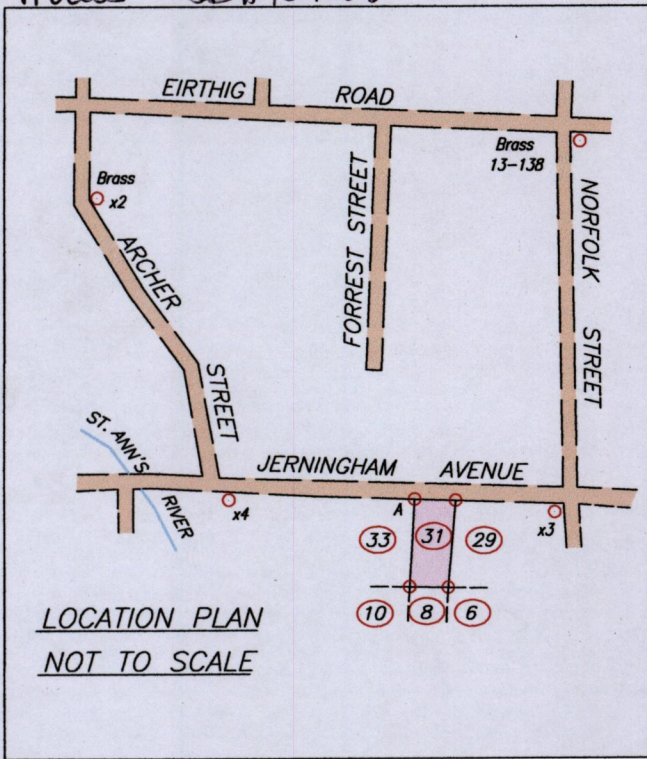
1(1)(1)

R.D. 3310/1970

Process SD#109605

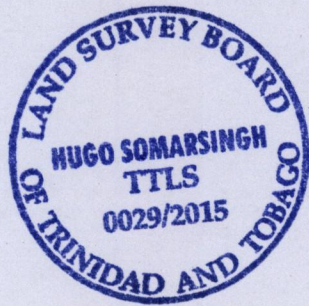
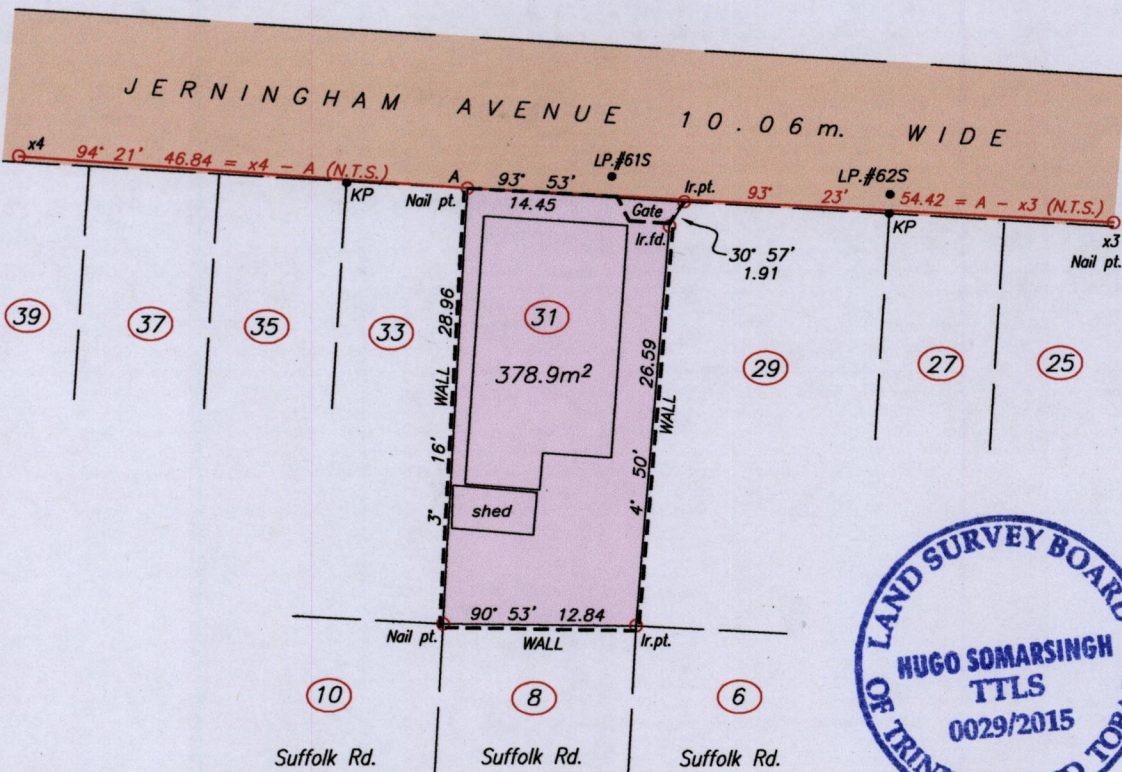
Cadastral Sheet 13D&.23A 4/d/2 A.20.G.  
City of Port Of Spain  
County of St. George

BELMONT



- LP. - Light Pole
- KP - King Post

|                   |          |                 |
|-------------------|----------|-----------------|
| x4 - x2           | 332' 15' | 112.41 (N.T.S.) |
| x3 - Brass 13-138 | 4' 52'   | 126.20 (N.T.S.) |



A = N 1179367 +/- 5.0m  
E 663348  
UTM 20 WGS 84 Hand Held GPS

SCALE 1:500  
Distances are in METRES

Bearings are U.T.M. Grid based on Solar observations

PLAN of a Parcel of land coloured pink in the City of Port of Spain  
Containing three hundred and seventy eight point nine square metres  
Surveyed by me, with due authority, in May 2015 at the request of  
Martin Joseph

Certified correct in accordance with Regulation 25 (1) of the Land Surveyors Regulations 1998.

Hef Somarsingh T.T.L.S.  
Trinidad & Tobago  
Land Surveyor

Entered on .....

