

1500

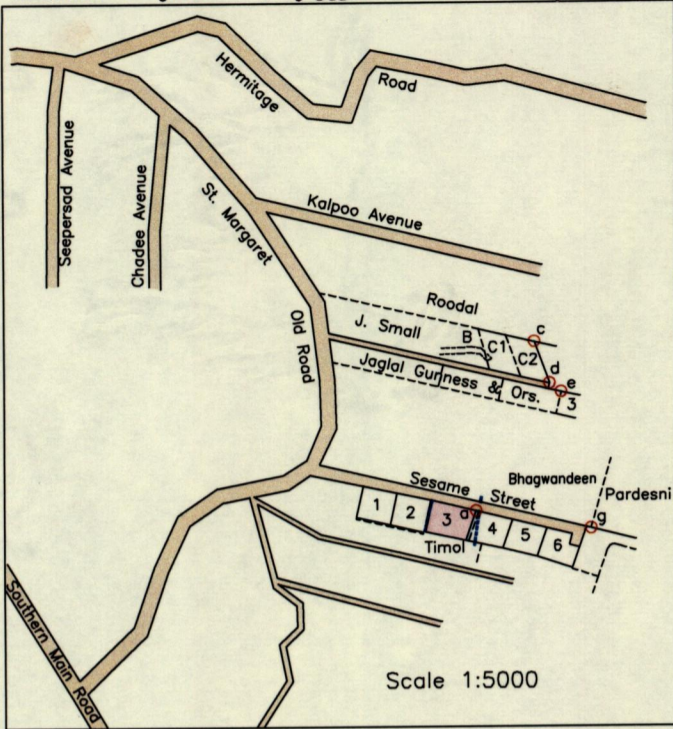
83

Location Diagram Process ID# 109210

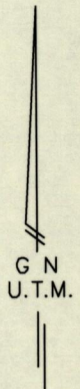
53C

Cadastral Sheet 1/a D.20.P.  
Ward of Pointe a Pierre  
County of Victoria

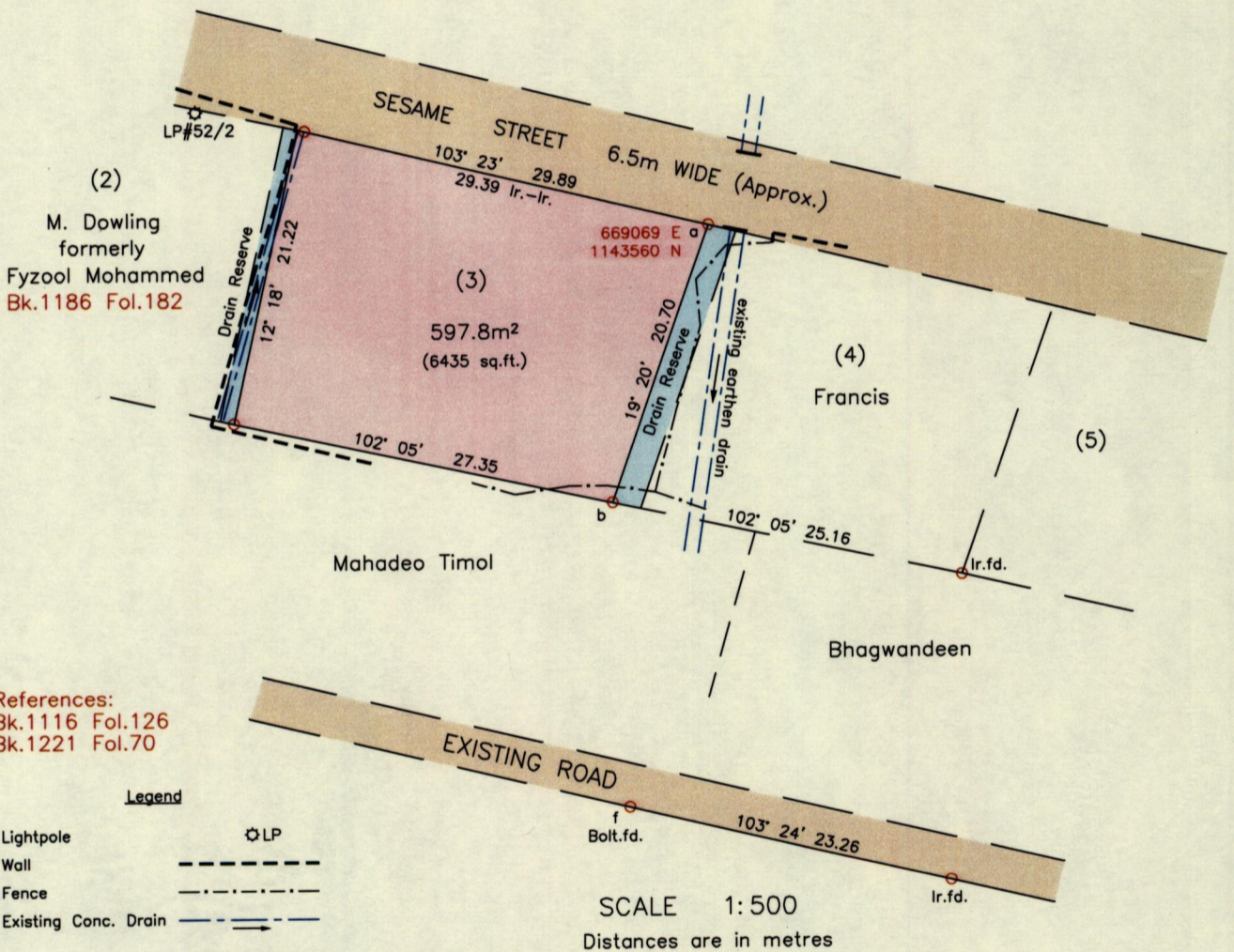
Claxton Bay



From	To	Bearing	Distance
b	f	177° 00'	21.55
a	g	98° 39'	77.59
a	c	19° 16'	118.70
c	d	159° 54'	29.41
d	e	126° 25'	9.67



Scale 1:5000



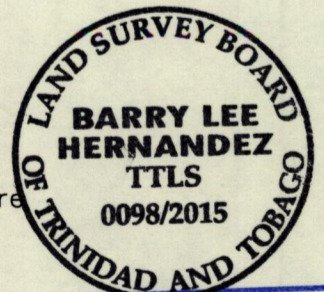
References:  
Bk.1116 Fol.126  
Bk.1221 Fol.70

Legend

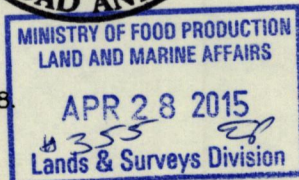
- Lightpole  LP
- Wall
- Fence
- Existing Conc. Drain

SCALE 1:500  
Distances are in metres

Notes: ○ Denotes Ir.f.d. unless otherwise stated  
 Bearings are U.T.M. Grid based on Solar Observations  
 Previous survey by Winston Ramcharan in April 1986 for F. Mohammed  
 Previous survey of Lot C1 by B. Hernandez in Feb.2013 for Elizabeth Edwards  
 Coordinates obtained using handheld GPS (UTM Zone 20, Naparima ± 5.0m)



PLAN of a parcel of land coloured pink in the Ward of Pointe a Pierre  
 Containing five hundred and ninety seven point eight square metres  
 Surveyed by me, with due authority, in March 2015 for Ashmy Rawlins  
 Certified Correct in accordance with Regulation 25(1) of the Land Surveyors Regulations 1998



Checked by ..... *Barry Hernandez* .....  
 Entered on ..... *28<sup>th</sup> April* ..... 2015.