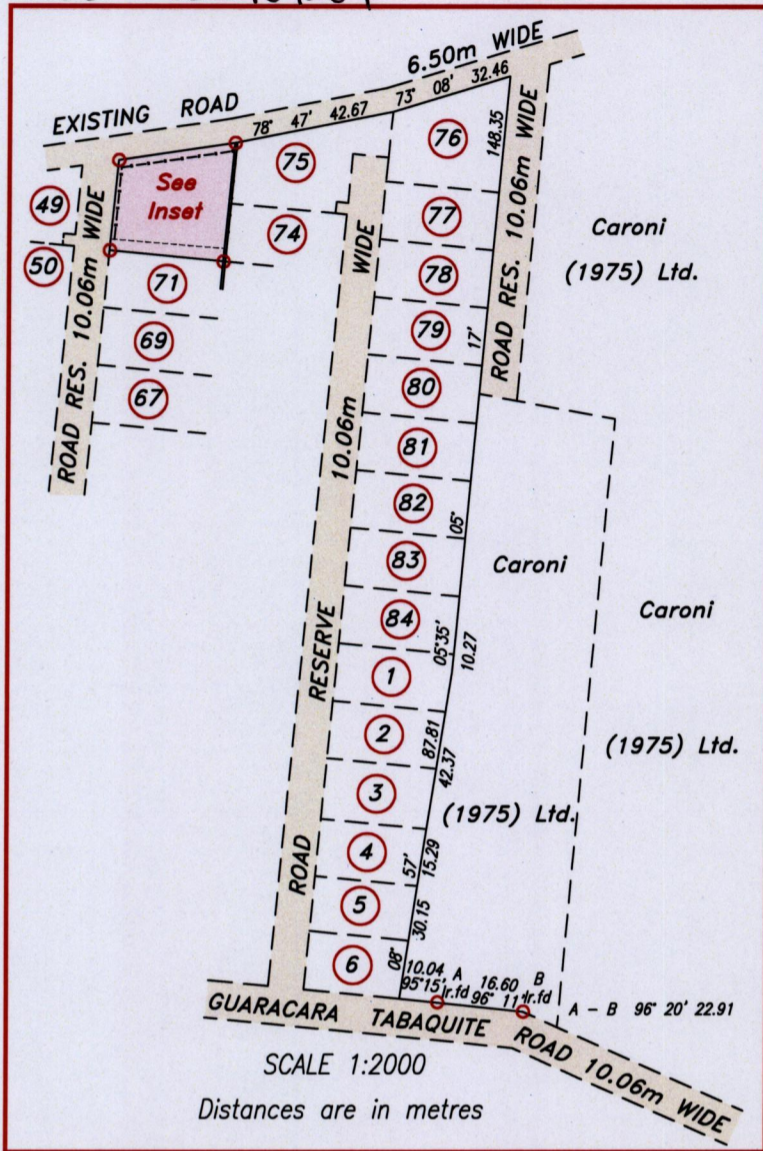


156()

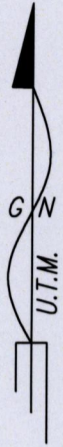
79

Cadastral Sheet D.22.P. 53C
4/c
Ward of Savanna Grande
County of Victoria

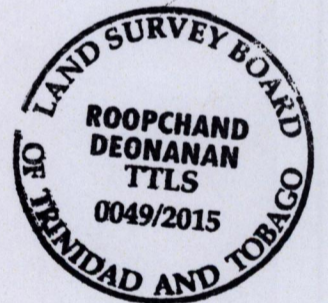
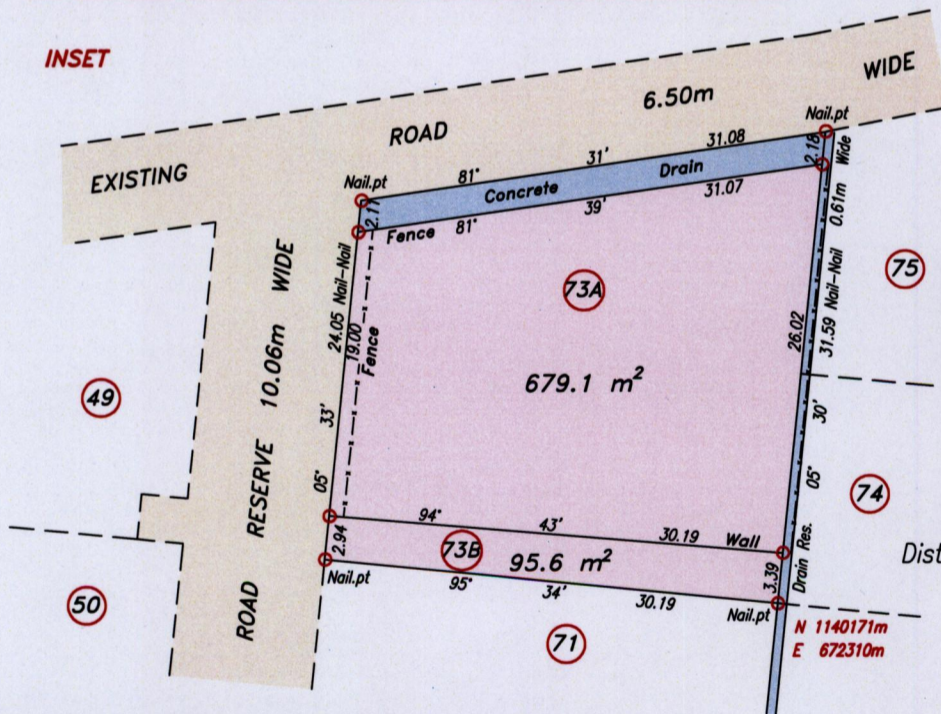
Process ID# 109264



See Plan D.F.1
Bk.1027 Fol.15
Bk.1222 Fol.71



INSET



SCALE 1:500

Distances are in metres

○Denotes No mark put except where otherwise stated

SCALE 1:2000

Co-ordinates are Naparima/UTM, derived using Handheld GPS (+/-5m)

Distances are in metres

Bearings are U.T.M. Grid based on Solar Observations

PLAN of 2 Parcels of land coloured pink in the Ward of Savanna Grande

Containing together seven hundred and seventy four point seven square metres

Surveyed by me, with due authority, on January 14th 2015 for the Sugar Industry Labour Welfare Committee

Certified Correct in accordance with Regulation 25 (1) of the Land Surveyors' Regulations 1998.

Checked by

R. Deonanan

Entered on Trinidad & Tobago Land Surveyor. 23rd April 2015.

PATH = ADA004 D:/DEO/SUGAR WELFARE/LOT 73 HARMONY HALL 2LOTS DWG.

