

1560

72

R.P.O. Vol. 46 fol. 583

C. T. Vol. 5244 fol. 225

Ward of Savana Grande

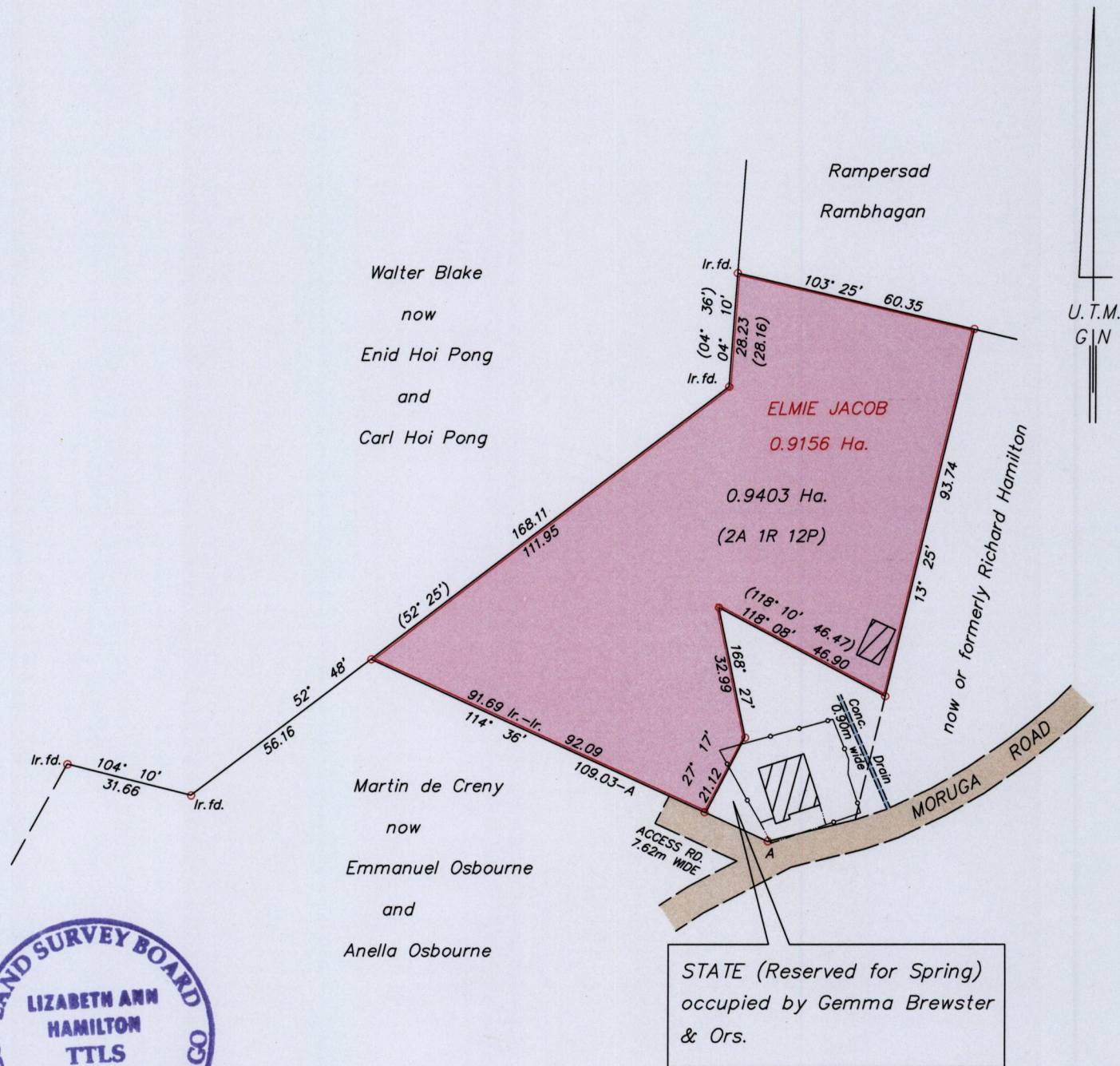
County of Victoria

Cadastral Sheet G.4.P., 54E
3/a

Process 304109242

VIDE Bk.323 fol.126

Bk.323 fol.129



A : 681522mE, 1135112mN

Co-ordinates are U.T.M. Zone 20 Naparima Datum +/-5m
obtained from handheld G.P.S.

Bearings are U.T.M. Grid based on Solar Observations

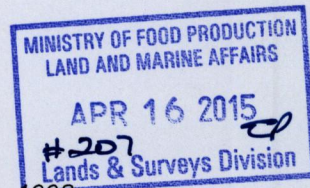
Distances are in metres

PLAN of a Parcel of land coloured pink in the Ward of Savana Grande

Containing zero point nine four zero three hectares

Surveyed by me, with due authority, in April 2015 at the request of Gemma Brewster

Certified Correct in accordance with Regulation 25(1) of the Land Surveyors Regulations 1998



Checked by

Lizabeta Hamilton

Entered

Trinidad & Tobago Land Surveyor *April 15* 2015

—○— Chain Link fence
- - - - - Wall

SCALE 1:1500

○ denotes lr.pt. unless otherwise stated