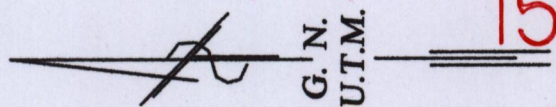


Ward of Savana Grande  
 County of Victoria  
 Cadastral Sheet G.4.L 54D. 2/d



1500

Gopee  
 now  
 Craignish Estate  
 G. N.  
 U.T.M.

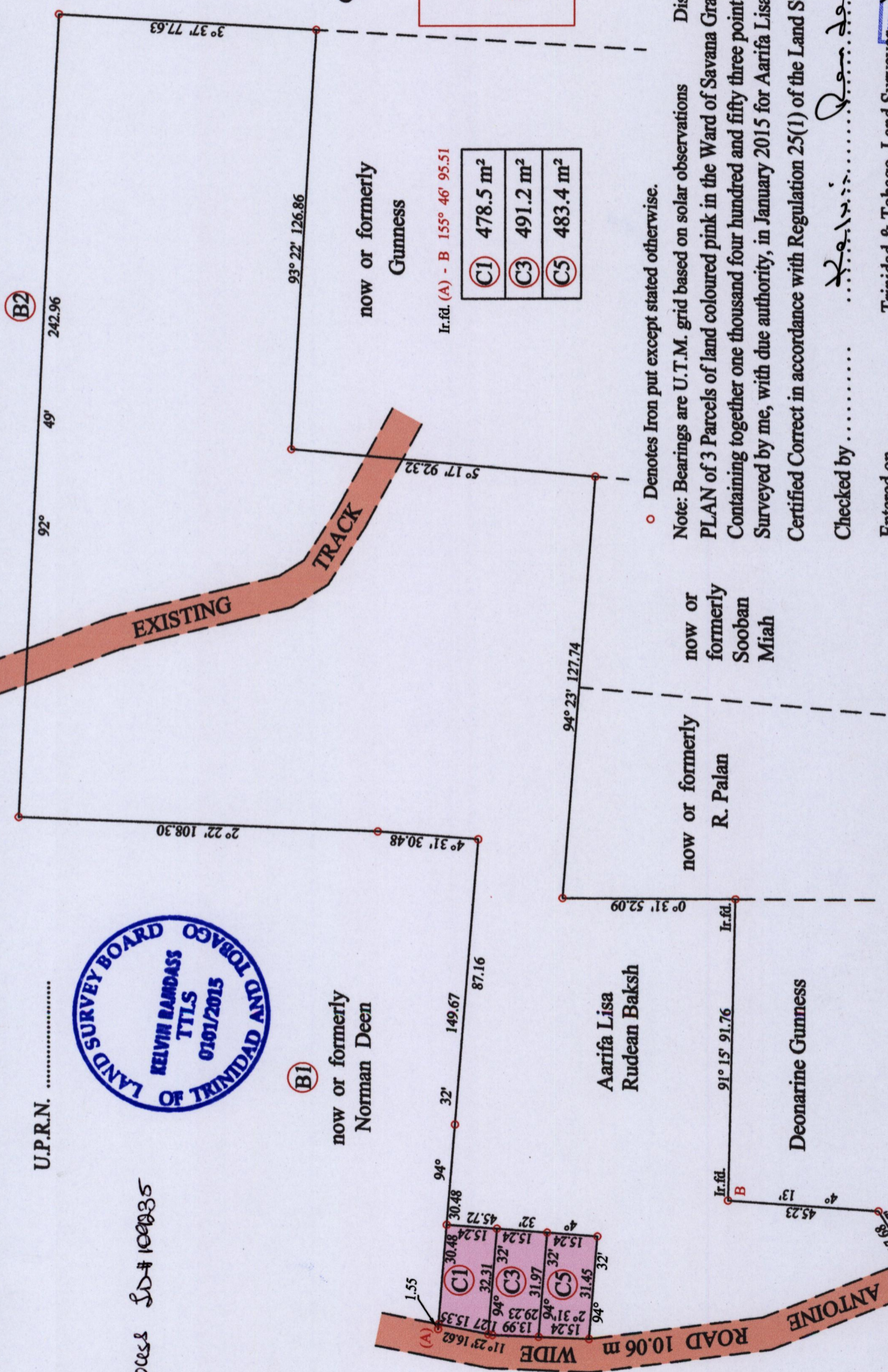
At Station (A)  
 E 0680081  
 N 1136196  
 Reading taken with  
 Handheld G.P.S.  
 U.T.M. Zone 20  
 WGS84  
 + 5 m.

SCALE: 1:1500

Distances are in metres  
 Note: Bearings are U.T.M. grid based on solar observations  
 PLAN of 3 Parcels of land coloured pink in the Ward of Savana Grande  
 Containing together one thousand four hundred and fifty three point one square metres  
 Surveyed by me, with due authority, in January 2015 for Aarifa Lisa Rudean Baksh  
 Certified Correct in accordance with Regulation 25(1) of the Land Surveyors Regulations 1998

Checked by ..... *R. R. ...* .....

Entered on ..... Trinidad & Tobago Land Surveyors Association 2015



Ir.f.d. (A) - B 155° 46' 95.51

C1	478.5 m <sup>2</sup>
C3	491.2 m <sup>2</sup>
C5	483.4 m <sup>2</sup>

o Denotes Iron put except stated otherwise.



U.P.R.N. ....

Process LD# 10035

