

1560

174

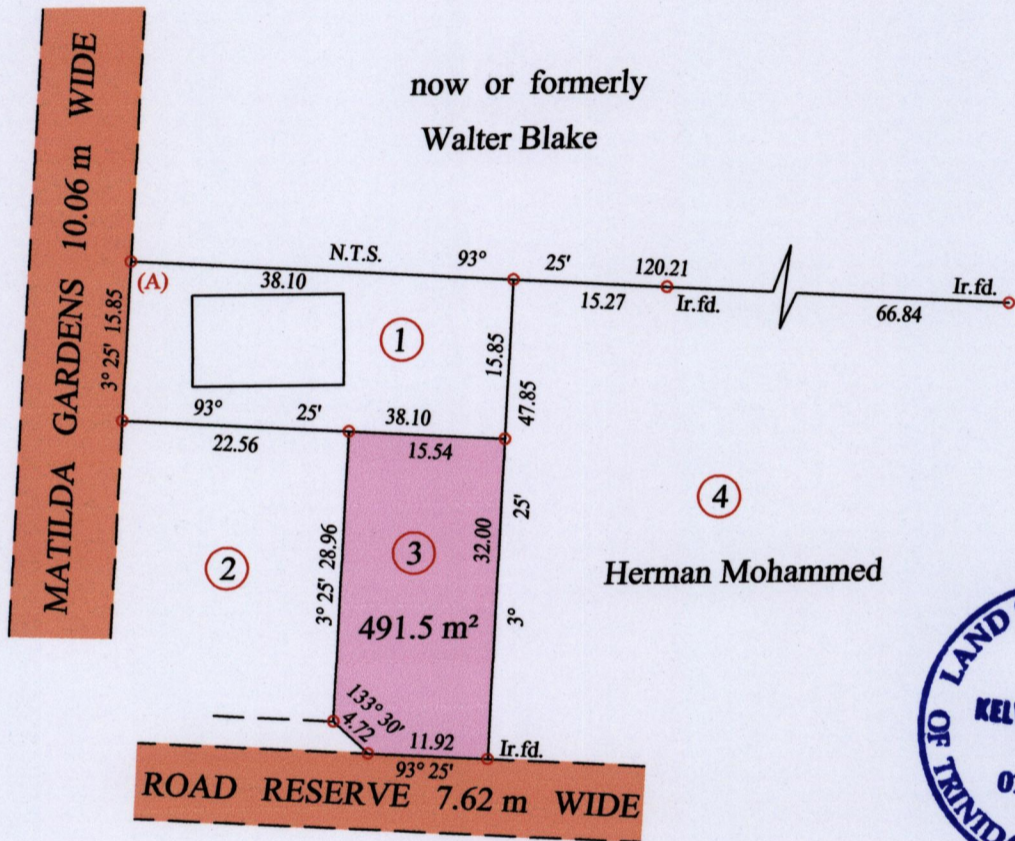
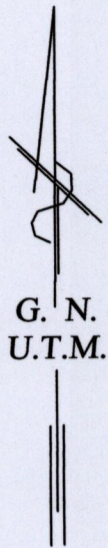
U.P.R.N.

Process SD#111024

Ward of Savana Grande

County of Victoria

Cadastral Sheet G.4.P $\frac{54E.}{3/a}$



Vide Plan R.H.29

At Station (A)
E 0681224
N 1135570
Reading taken with
Handheld G.P.S.
U.T.M. Zone 20
WGS84
± 5 m.

o Denotes Iron put except stated otherwise.

SCALE : 1:750

Note: Bearings are U.T.M. grid based on solar observations Distances are in metres

PLAN of a parcel of land coloured pink in the Ward of Savana Grande

Containing four hundred and ninety one point five square metres

Surveyed by me, with due authority, in July 2015 for Judy Ramcharan

Certified Correct in accordance with Regulation 25(1) of the Land Surveyors Regulations 1998

Checked by *Kelvin Ramdass*

Entered on Trinidad & Tobago Land Surveyor 2015

