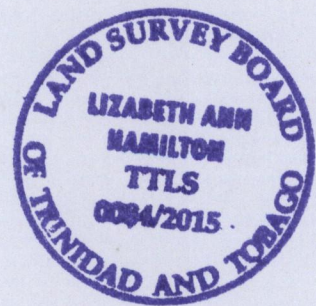
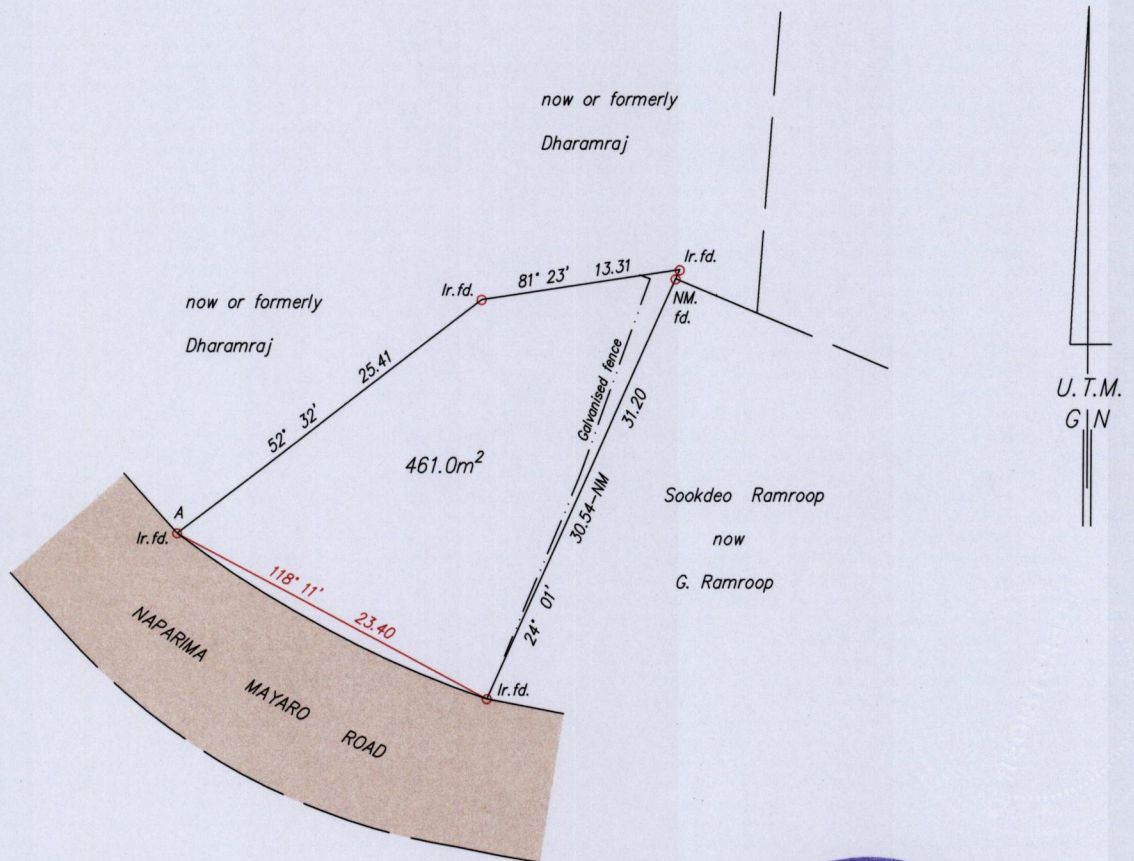


Process JD#110934 156()

Ward of Savana Grande
County of Victoria 155
Cadastral Sheet G.4.N., $\frac{54D}{4/a/2}$

PRINCES TOWN

VIDE Bk.1036 fol.37
Bk.1111 fol.109



A: 678269mE, 1135444mN

Co-ordinates are U.T.M. Zone 20 Naparima Datum +/-5m
obtained from handheld G.P.S.

SCALE 1:500

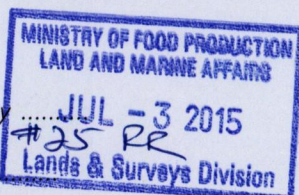
Bearings are U.T.M. Grid based on Solar Observations

Distances are in metres

PLAN showing the boundaries of a Parcel of land in the Ward of Savana Grande

Surveyed by me with due authority, in June 2015 at the request of Keshava Gosine and G. Ramroop

Certified Correct in accordance with Regulation 25(1) of the Land Surveyors Regulations 1998



Checked by

JUL - 3 2015

#25 PR

Entered

Lands & Surveys Division

Trinidad & Tobago Land Surveyor

Elizabeth Ann Hamilton

July 02

2015

49P