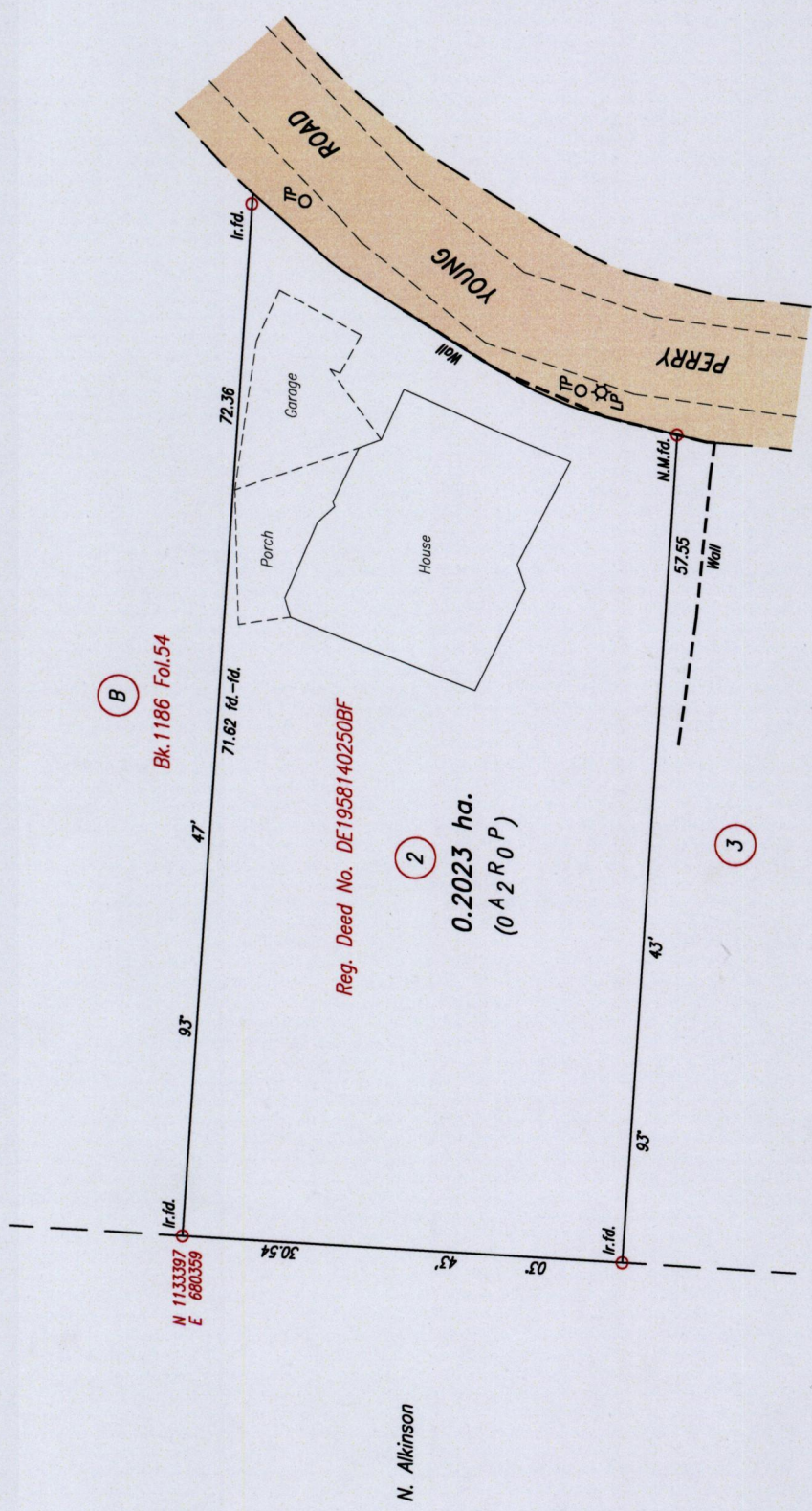


Process SD # 110915



1560

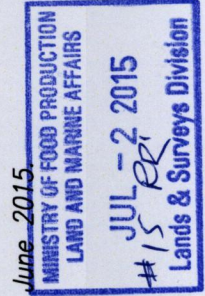
152

SCALE 1:500
 Distances are in metres



Co-ordinates are Naparima/UTM, derived using handheld GPS (+/-5m)
 Bearings are Cassini grid based on Solar Observations
 PLAN showing certain boundary lines and building in the Ward of Savana Grande
 Surveyed by me, with due authority, on 29th June 2015 at the request of Shafeek Ali
 Certified Correct in accordance with Regulation 25 (1) of the Land Surveyors Regulations 1998

Checked by Shivan Birkette



Entered on Trinidad & Tobago Land Surveyor. 30th June 2015
 FILE PATH = AD4002 D:\SHIVON BIRKETTE\SHAFEK ALL-CADASTRAL.DWG.