

1560

134

U.P.R.N.

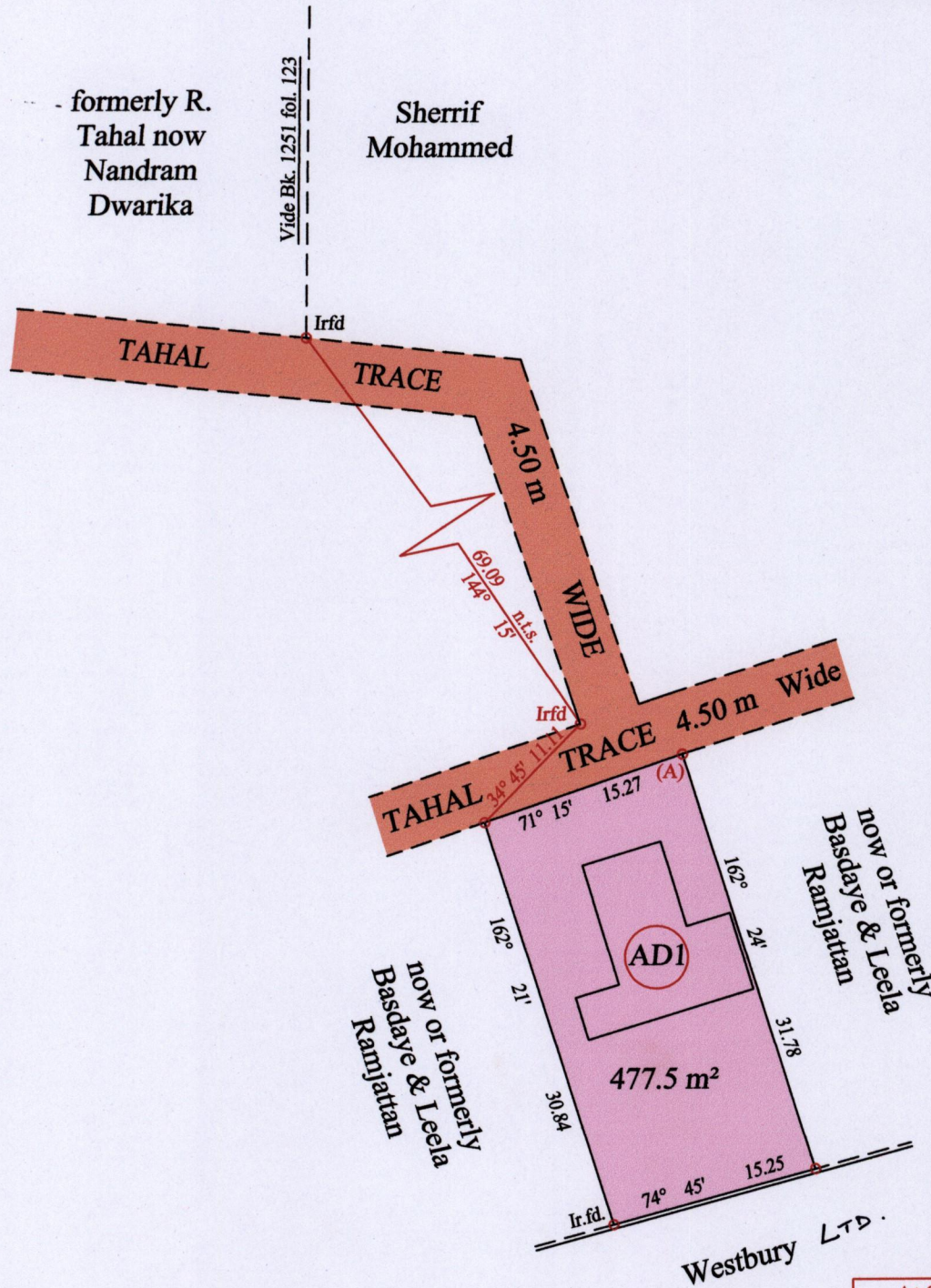
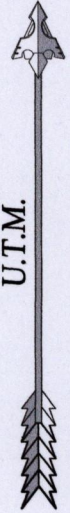
Process ID#110859

Ward of Pointe - a - Pierre

County of Victoria

Cadastral Sheet D.22.L. 53C / 4/b

G.N.



Concrete Wall

At Station (A)
 E 0653792
 N 1129616
 Reading taken with
 Handheld G.P.S.
 U.T.M. Zone 20
 Naparima
 ± 5 m.

○ Denotes Iron put except stated otherwise.

Note: Bearings are U.T.M. grid based on solar observations

SCALE : 1:500
Distances are in metres

PLAN of a Parcel of land coloured pink in the Ward of Pointe - a - Pierre

Containing four hundred and seventy seven point five square metres

Surveyed by me, with due authority, in May 2015 for Andrew Deonarine

Certified Correct in accordance with Regulation 25(1) of the Land Surveyors Regulations 1998

Checked by

Entered on Trinidad & Tobago Land Surveyor 17-06.....2015

