

1560

133

U.P.R.N.

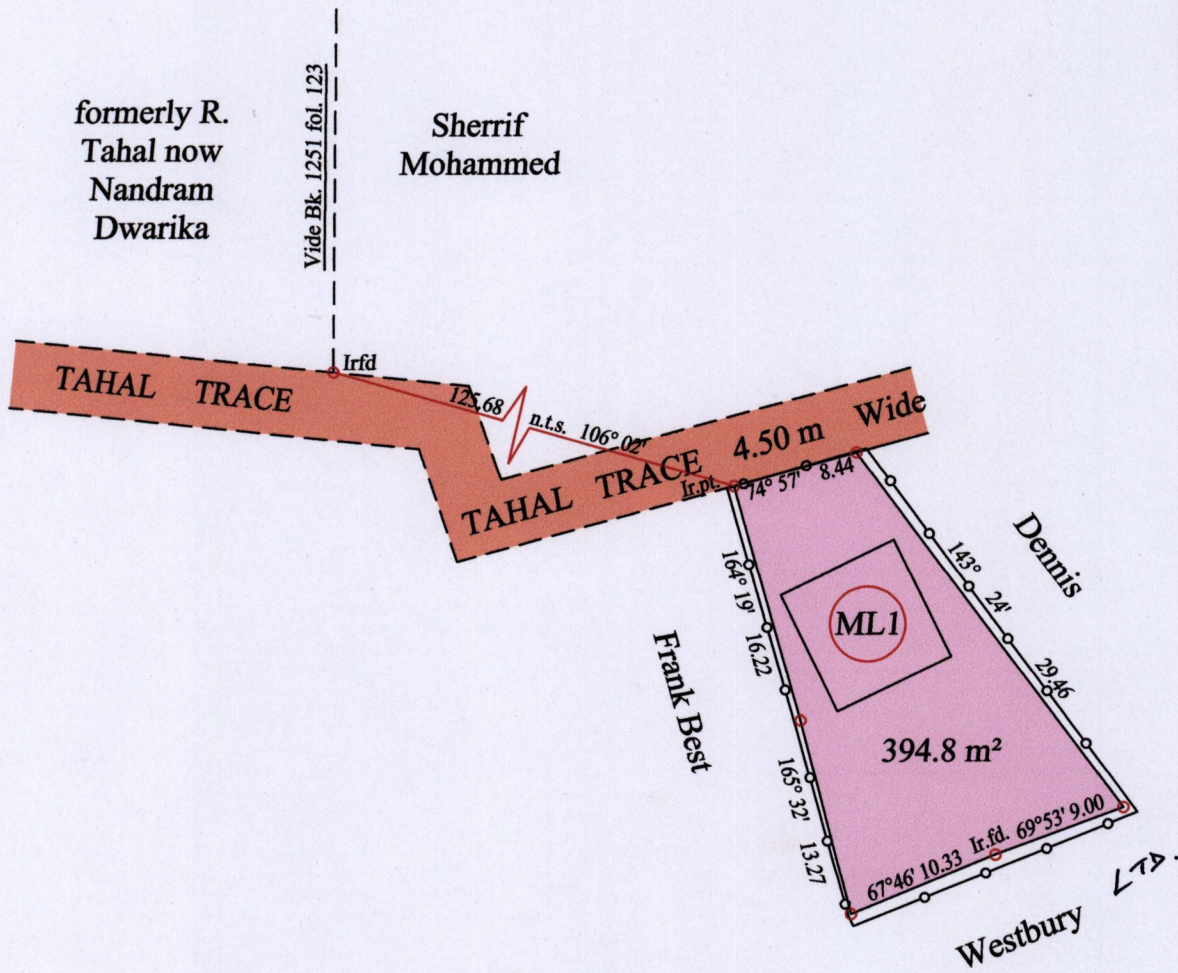
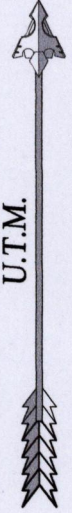
Process SD# 110858

Ward of Pointe - a - Pierre

County of Victoria

Cadastral Sheet D.22.L. 53C / 4/b

G.N.



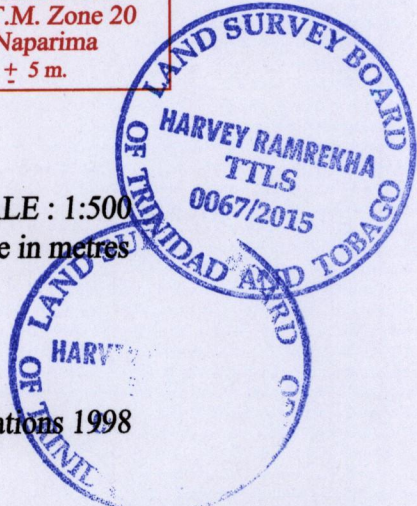
At Station (A)
 E 0673201
 N 1141342
 Reading taken with
 Handheld G.P.S.
 U.T.M. Zone 20
 Naparima
 ± 5 m.

o Denotes Iron put except stated otherwise.

Note: Bearings are U.T.M. grid based on solar observations

SCALE : 1:500
Distances are in metres

PLAN of a Parcel of land coloured pink in the Ward of Pointe - a - Pierre
 Containing three hundred and ninety four point eight square metres
 Surveyed by me, with due authority, in May 2015 for Milton Lewis
 Certified Correct in accordance with Regulation 25(1) of the Land Surveyors Regulations 1998



Checked by

Entered on Trinidad & Tobago Land Surveyor 17.06.2015

MINISTRY OF FOOD PRODUCTION
 LAND AND MARINE AFFAIRS
 JUN 17 2015
 * 229
 Lands & Surveys Division