

1560

120

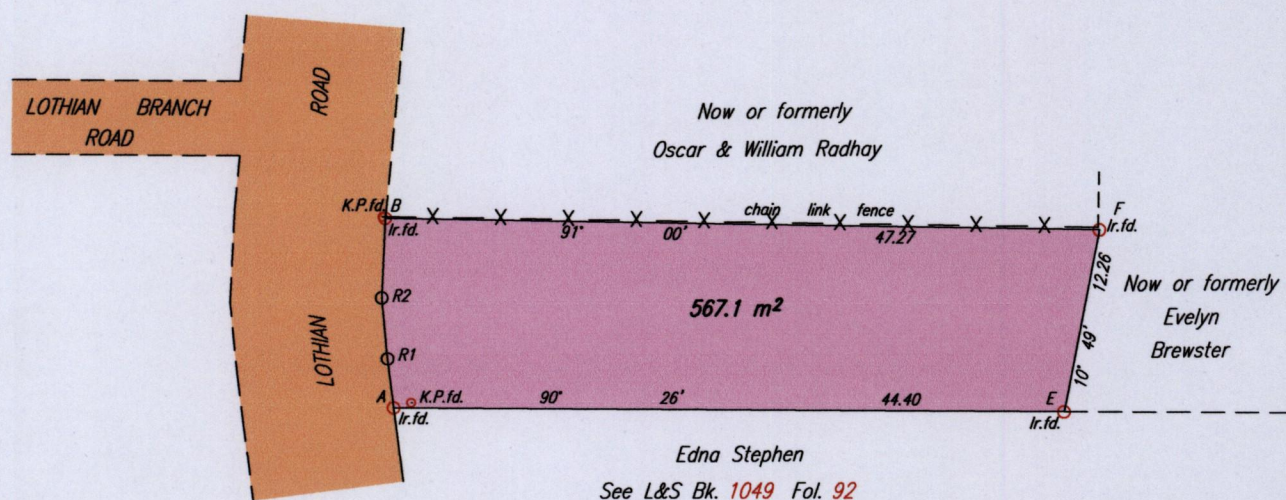
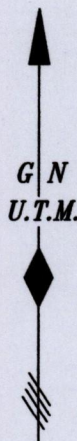
Cadastral Sheet G.4.0 54D  
4/a/3

Ward of Savana Grande

County of Victoria

Process ID# 109940

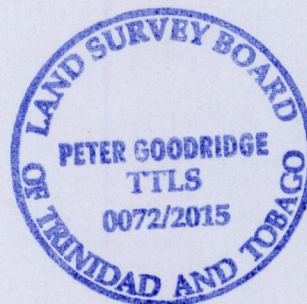
PRINCESS TOWN



Edna Stephen  
See L&S Bk. 1049 Fol. 92

LEGEND

From	To	Bearing	Distance
A	R1	352° 44'	3.29
R1	R2	354° 24'	4.06
R2	B	2° 39'	5.24
A	B	357° 24'	12.55



Coordinates of A (Ir.f.d): 0677673mE 1135003mN  
U.T.M. Naparima (-/+ 4.00m)  
G.P.S. Direct observation using handheld receiver

SCALE 1:500

Distances are in METRES

○ Denotes Iron put except where otherwise stated

Bearings are U.T.M. Grid based on Solar Observations

PLAN of a Parcel of land coloured pink in the Ward of Savana Grande

Containing five hundred and sixty seven point one square metres

Surveyed by me, with due authority, on 2nd May 2015 for Linda Lee Chee

Certified Correct in accordance with Regulation 25 (1) of The Land Surveyors' Regulations 1998,

Entered

*[Signature]* ..TTLS

Trinidad & Tobago Land Surveyor  
C:\LESS 2015\TRINIDAD\LEE CHEE,LINDA\LOTHIAN RD.PRINCESS TOWN.dwg. FILE NO:L054 2015

