

156()

109

Process ID# 109907

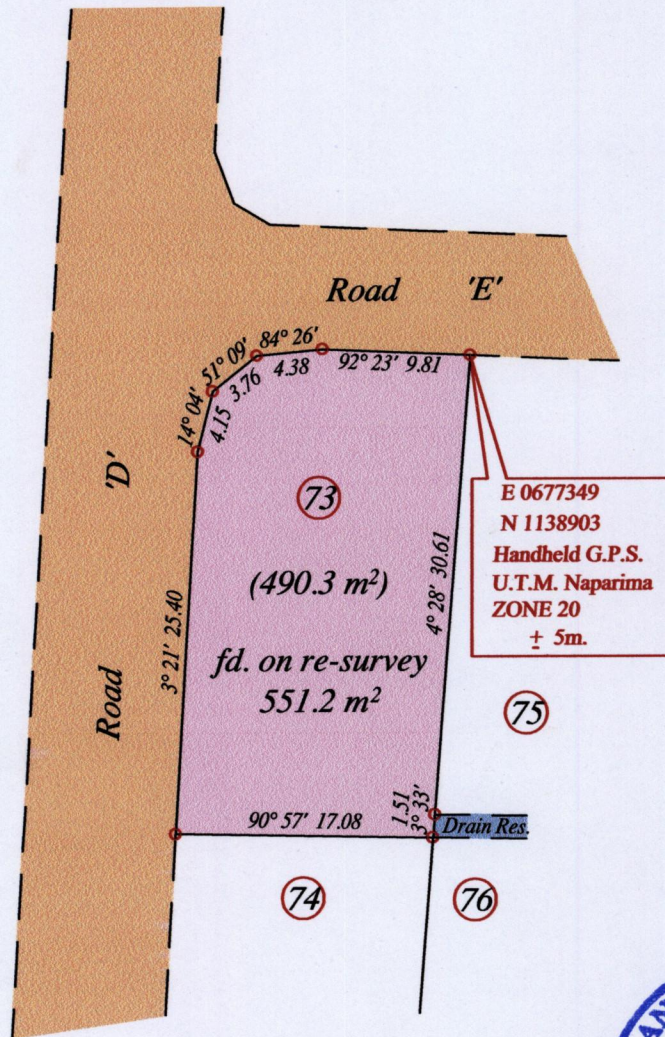
Ward of Savana Grande

County of Victoria

Cadastral Sheet D 23 N, $\frac{54 A}{4/c}$

G.N

U.T.M.



o Denotes Iron found except stated otherwise.

SCALE : 1:500

Note: Bearings are U.T.M. grid based on solar observations

Distances are in metres

PLAN of a Parcel of land coloured pink in the Ward of Savana Grande

Containing five hundred and fifty one point two square metres

Re-defined by me, with due authority, in May 2015 for Melissa Kowlessar

Certified correct in accordance with Regulation 25 (1) of the Land Surveyors Regulations 1998.

Winston Ramcharan

Entered on

Trinidad & Tobago Land Surveyor

18th May 2015

