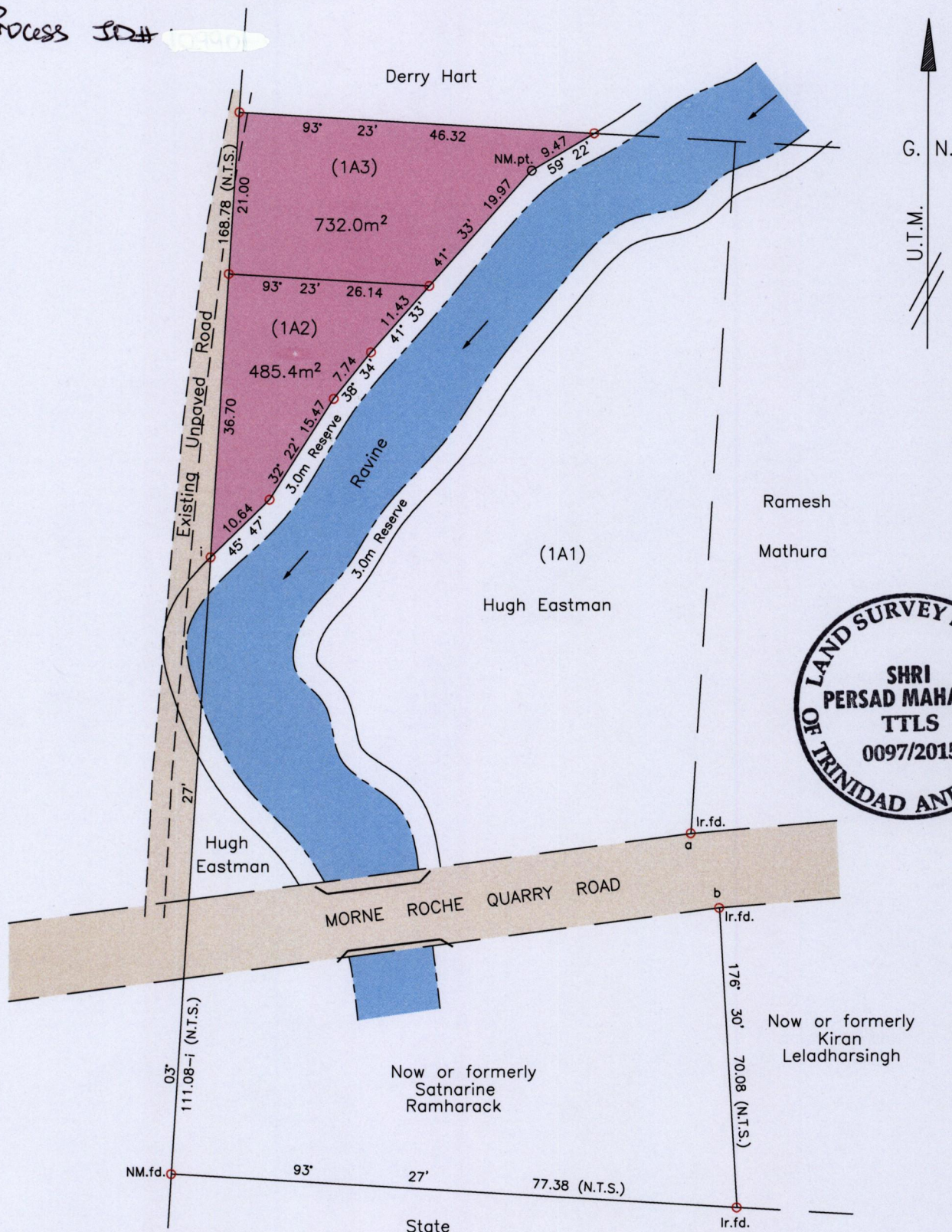


References:
 R.D.# DE201302308544
 Bk.1251 Fol.202
 Bk.250 Fol.28
 Bk.1021 Fol.89
 Previous survey by H. Ramrekha in Jan. 2010
 Previous survey by S. Remaul in March 2007

1560

Cadastral Sheet D.23.E. ^{54A}/_{1/a} 107
 Ward of Pointe-a-Pierre
 County of Victoria

Process JDH



i - a : 119° 50' 72.13
 a - b : 159° 06' 10.39

Point 'i' = N 1143417, E 675376
 Coordinates obtained by Hand Held GPS.
 U.T.M. 20, NAPARIMA (+/-5.0m.)

SCALE 1:750

Distances are in metres

○ Denotes Iron put except where otherwise stated
 Bearings are U.T.M. grid based on Solar Observations

PLAN of 2 Parcels of land coloured pink in the Ward of Pointe-a-Pierre
 Containing together one thousand two hundred and seventeen point four square metres
 Surveyed by me, with due authority, in November 2013, January 2014 & February 2015 at the request of Hugh Eastman
 Certified Correct in accordance with Regulation 25 (1) of the Land Surveyors Regulations 1998

Checked by. Shri Persad Maharaj

Entered on. Trinidad & Tobago Land Surveyor. 18th May 2015.

