

Process ID# 110792

Vide : Bk.454 Fol.129

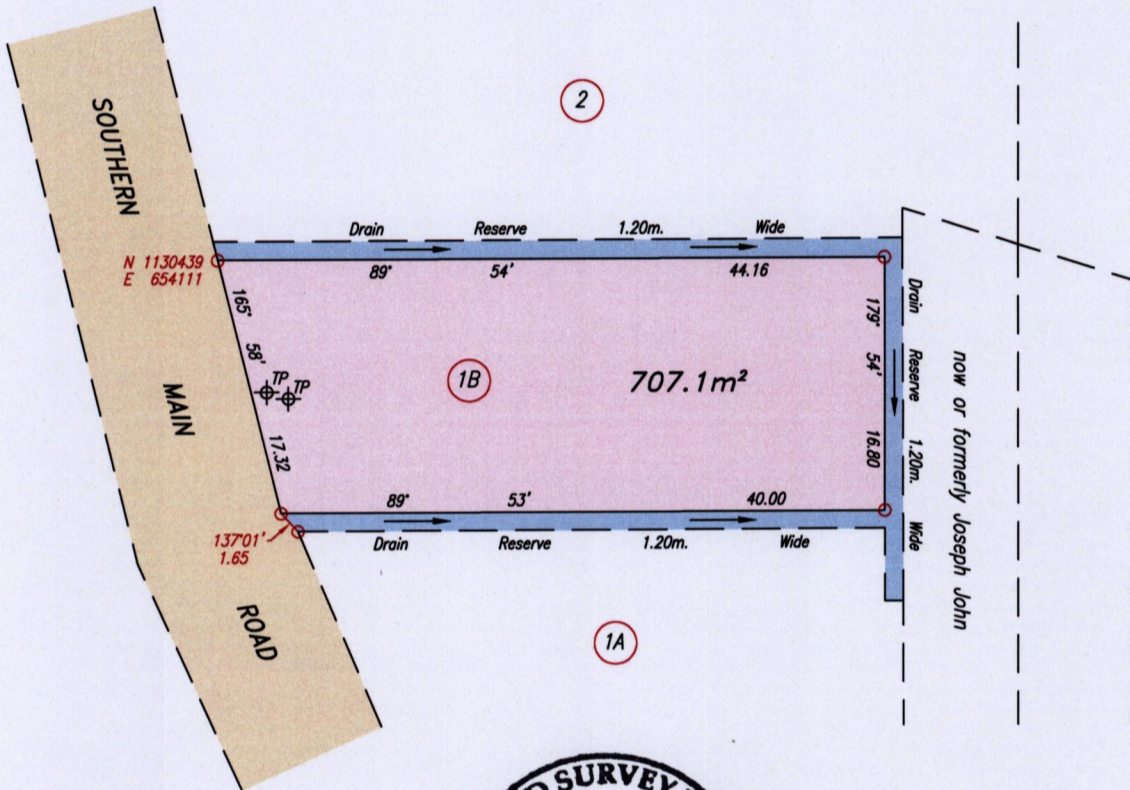
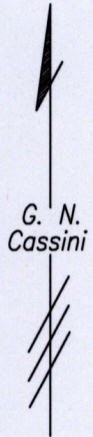
1559

66

REDEFINITION PLAN

Cadastral Sheet G.6.I.&J. 62C  
1/d  
Ward of La Brea  
County of St. Patrick

ROUSILLAC VILLAGE,  
LA BREA.



TP Telephone Pole

SCALE 1:500

Distances are in metres

o Denotes Iron found except otherwise stated.  
Co-ordinates are Naparima/UTM, derived using handheld GPS (+/-5m)  
Bearings are Cassini grid based on Solar Observations  
PLAN of a Parcel of land coloured pink in the Ward of La Brea  
Containing seven hundred and seven point one square metres  
Redefined by me, with due authority, on 26th June 2015 at the request of Rovert Branche  
Certified Correct in accordance with Regulation 25 (1) of the Land Surveyors Regulations 1998

Checked by . . . . .

*Shivon Birkette*

Entered on . . . . .

Trinidad & Tobago Land Surveyor. . . . . 8th July 2015.

FILE PATH = ADA002 D:\SHIVON BIRKETTE\ROVERT BRANCHE\_CADASTRAL.DWG.

