

Process # 110785

Vide : Bk.454 Fol.129

1559

65

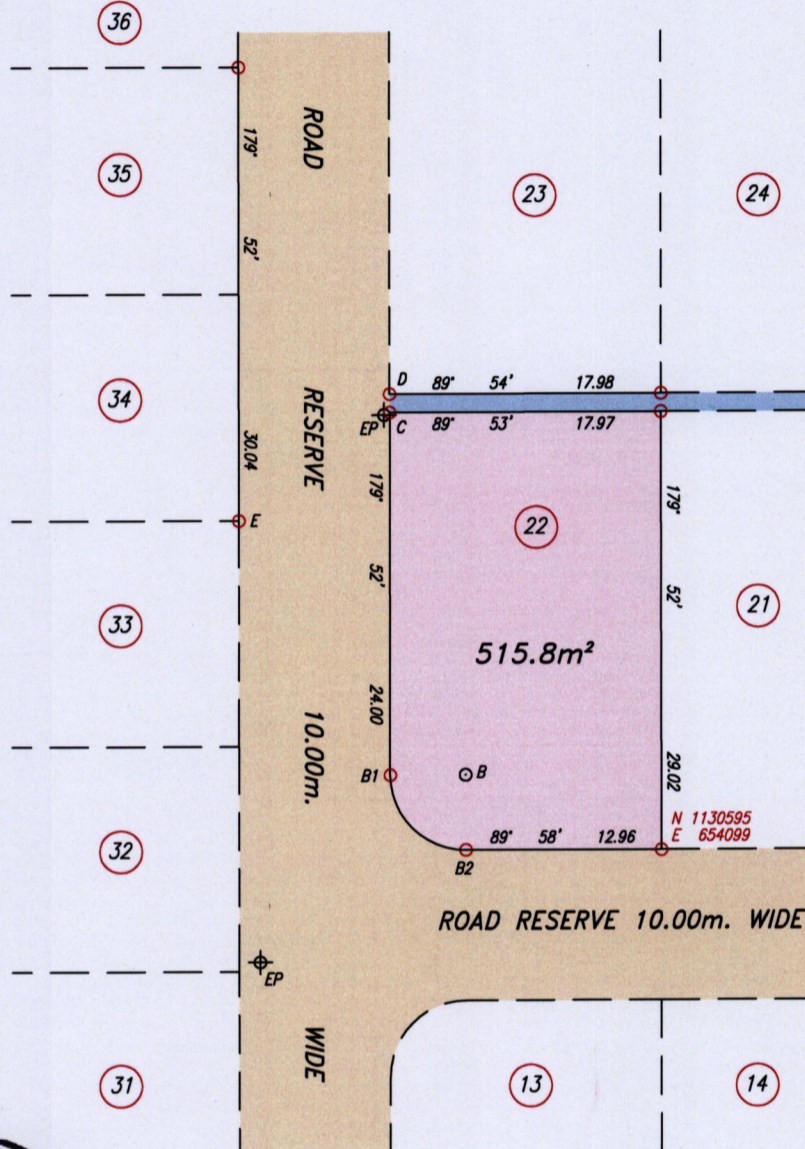
Cadastral Sheet G.6.I.&J. 62C  
1/d

Ward of La Brea

County of St. Patrick

REDEFINITION PLAN

ROUSILLAC VILLAGE,  
LA BREA.



- B - B1 269° 51' 5.00
- B - B2 179° 50' 5.00
- C - D 359° 26' 1.21
- C - E 234° 25' 12.28

EP Electricity Pole

SCALE 1:500

Distances are in metres

○ Denotes Iron found except otherwise stated.

Co-ordinates are Naparima/UTM, derived using handheld GPS (+/-5m)

Bearings are Cassini grid based on Solar Observations

PLAN of a Parcel of land coloured pink in the Ward of La Brea

Containing five hundred and fifteen point eight square metres

Redefined by me, with due authority, on 26th June 2015 at the request of Rovert Branche

Certified Correct in accordance with Regulation 25 (1) of the Land Surveyors Regulations 1998

Checked by . . . . .

*Shivon Birkette*

Entered on . . . . .

Trinidad & Tobago Land Surveyor. . . . . 8th July 2015.

FILE PATH = ADA002 D:\SHIVON BIRKETTE\ROVERT BRANCHE\_CADASTRAL.DWG.

