

1559

62

Process S# 110768

Ir.f.d. A : 1129453mN, 656176mE
U.T.M. ZONE 20, Naparima (+/- 5.0m)
Direct Observation - G.P.S. Handheld

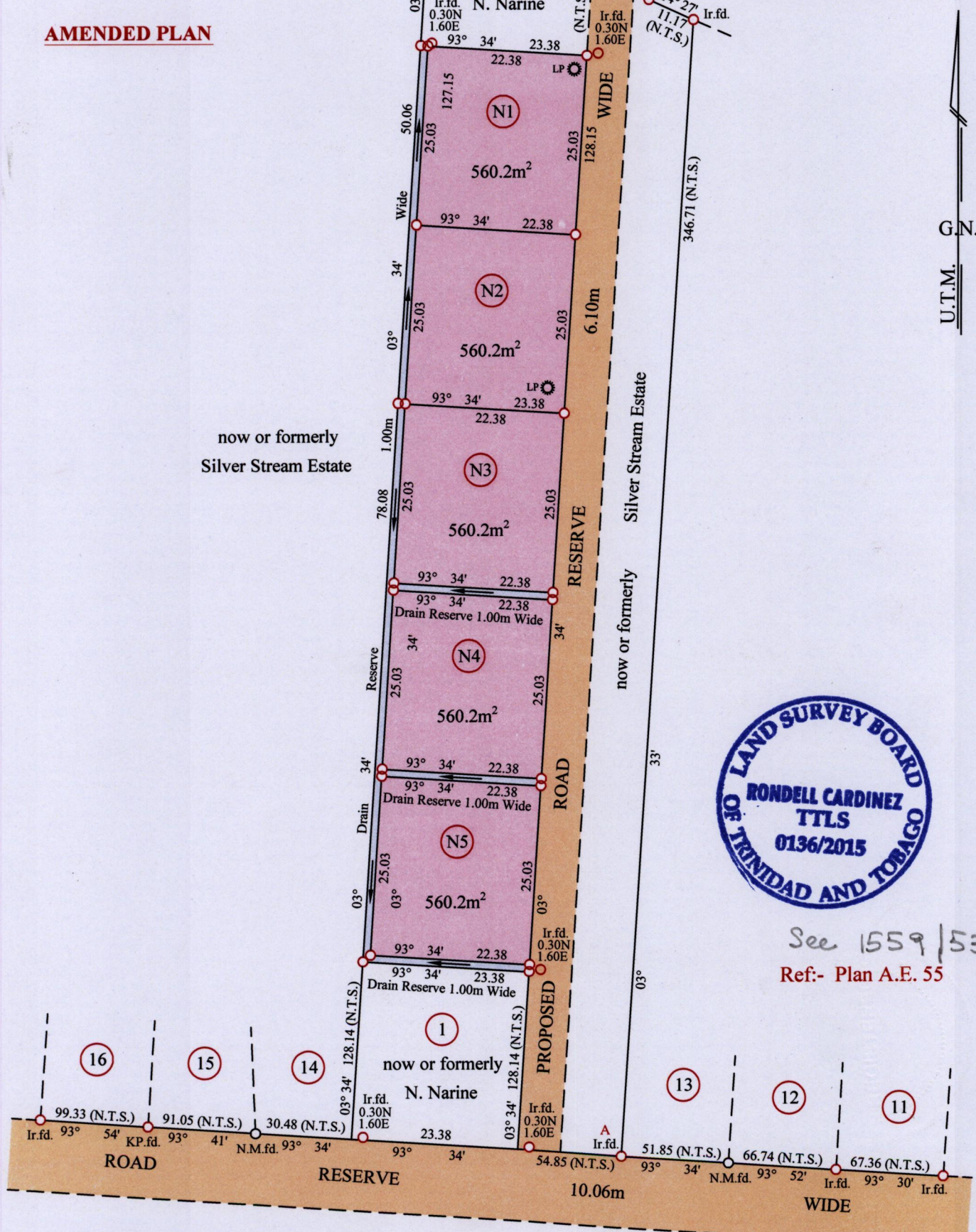
Cadastral Sheet 62C/4/a, G.6.K.

Ward of La Brea

County of St. Patrick

See Reg. Deed No. 201002751290

AMENDED PLAN



See 1559/53
Ref:- Plan A.E. 55

○ Denotes Iron Put unless otherwise stated

Bearings are U.T.M. Grid based on Solar Obs.

PLAN of 5 Parcels of land coloured pink in the **Ward of La Brea**

Containing together **two thousand eight hundred and one square metres**

Surveyed by me, with due authority, in June 2015 at the request of **Vinood Dookran**

Certified Correct, in accordance with Regulation 25(1) of the Land Surveyors Regulations 1998

LP Light Pole

SCALE 1: 750

Distances are in Metres

Entered on

Rardinaz

Checked by

Trinidad & Tobago Land Surveyor *10th July 2015*

