

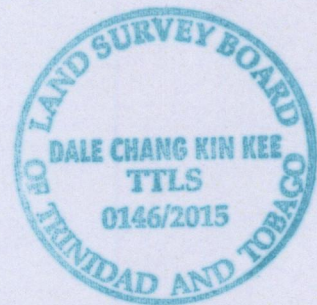
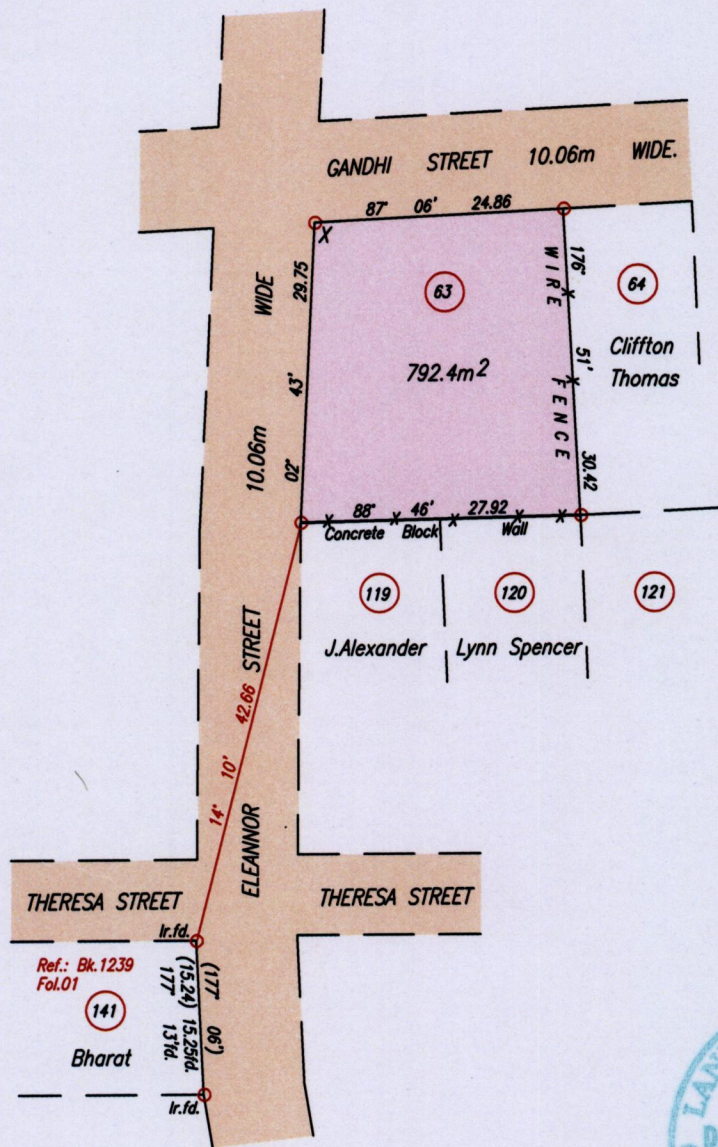
1558

98

Cadastral Sheet G.3. 53F  
Ward of Naparima 1/a/1  
County of Victoria  
Marabella.

Ref.: Plan M.G. 27

Process ID# 109306



X : 668802mE, 1138268mN  
(U.T.M. 20, Naparima (+/-5m)  
Coordinates obtained from  
handheld GPS.

SCALE 1:750

Distances are in metres

○ Denotes Iron put except otherwise stated  
Bearings are Cassini Grid based on Solar Observations  
Plan of a Parcel of land coloured pink in the Ward of Naparima  
Containing seven hundred and ninety two point four square metres.  
Surveyed by me, with due authority, in February, 2015 for R.Brawaithe & Ors.  
Certified Correct in accordance with Regulation 25 (1) of the Land Surveyors' Regulations 1998

*[Handwritten signature]*

Entered on . . . . . Trinidad & Tobago Land Surveyor. 16th February . . . . .

