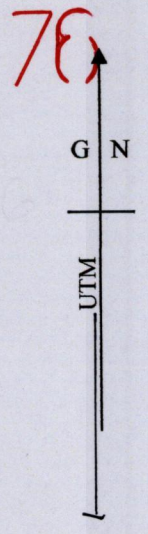


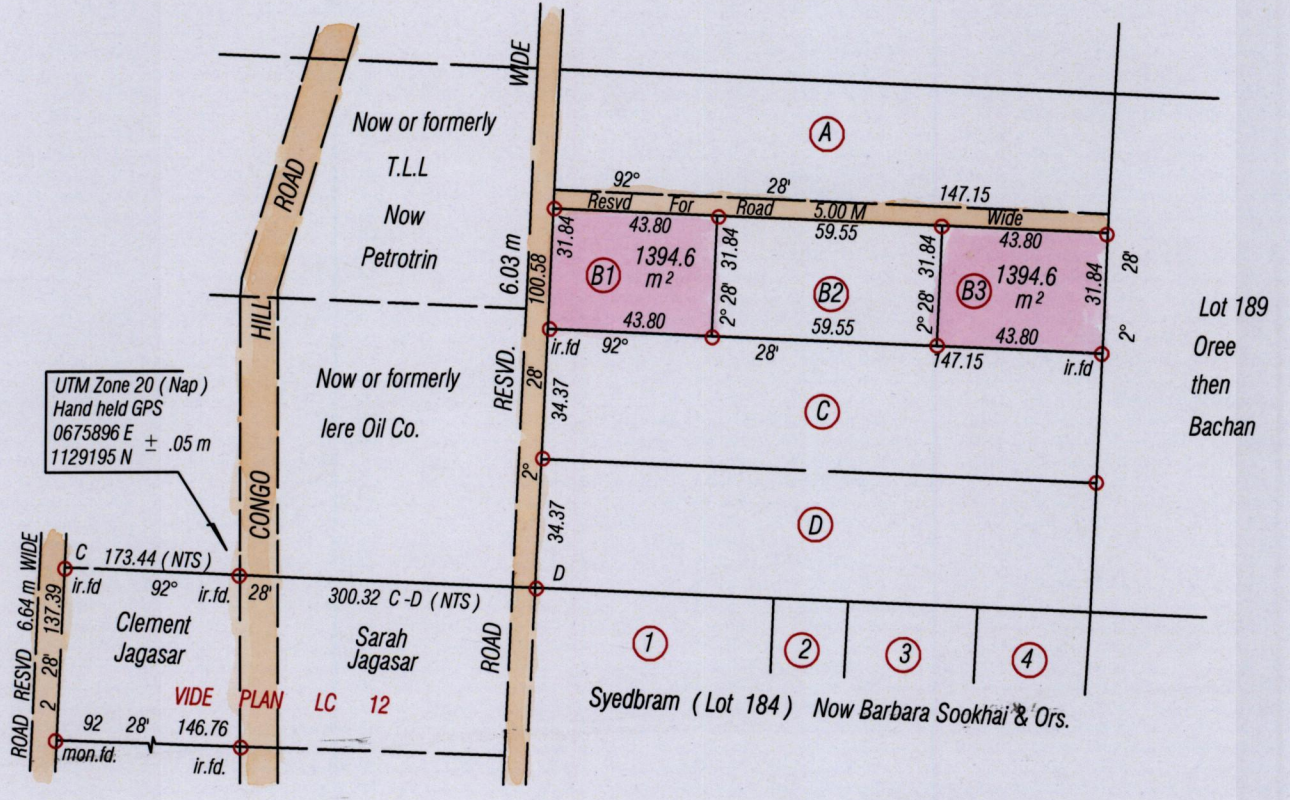
1558

Cadastral Sheet (G 9 J) 64 A
County of Victoria 3/b
Ward of Naparima



Process ID# 109211

Bk. 1021 Fol. 216
Vide Plan AE 71



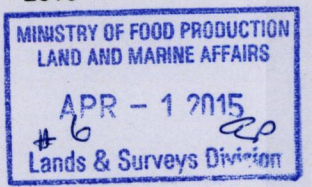
Bearings are UTM Grid based on Solar Obs.
○ Denotes iron put except otherwise stated

SCALE 1/2000
Distances are in Metres

PLAN of 2 Parcels of land coloured pink in the Ward of Naparima
Containing two thousand seven hundred and eighty nine point two square metres
Surveyed by me, with due authority, in March 2015 For Roma Samuel
Certified Correct in accordance with Regulation 25 (1) of the Land Surveyors' Regulations 1998,

Checked by.....
Entered on.....

Winston Ramcharan
Trinidad & Tobago Land Surveyor. 23rd March 2015



4+2