

Process # 111062

TABLELAND  
St. Theresa Of The Child Jesus

1558

Cadastral Sheet H.1.E.

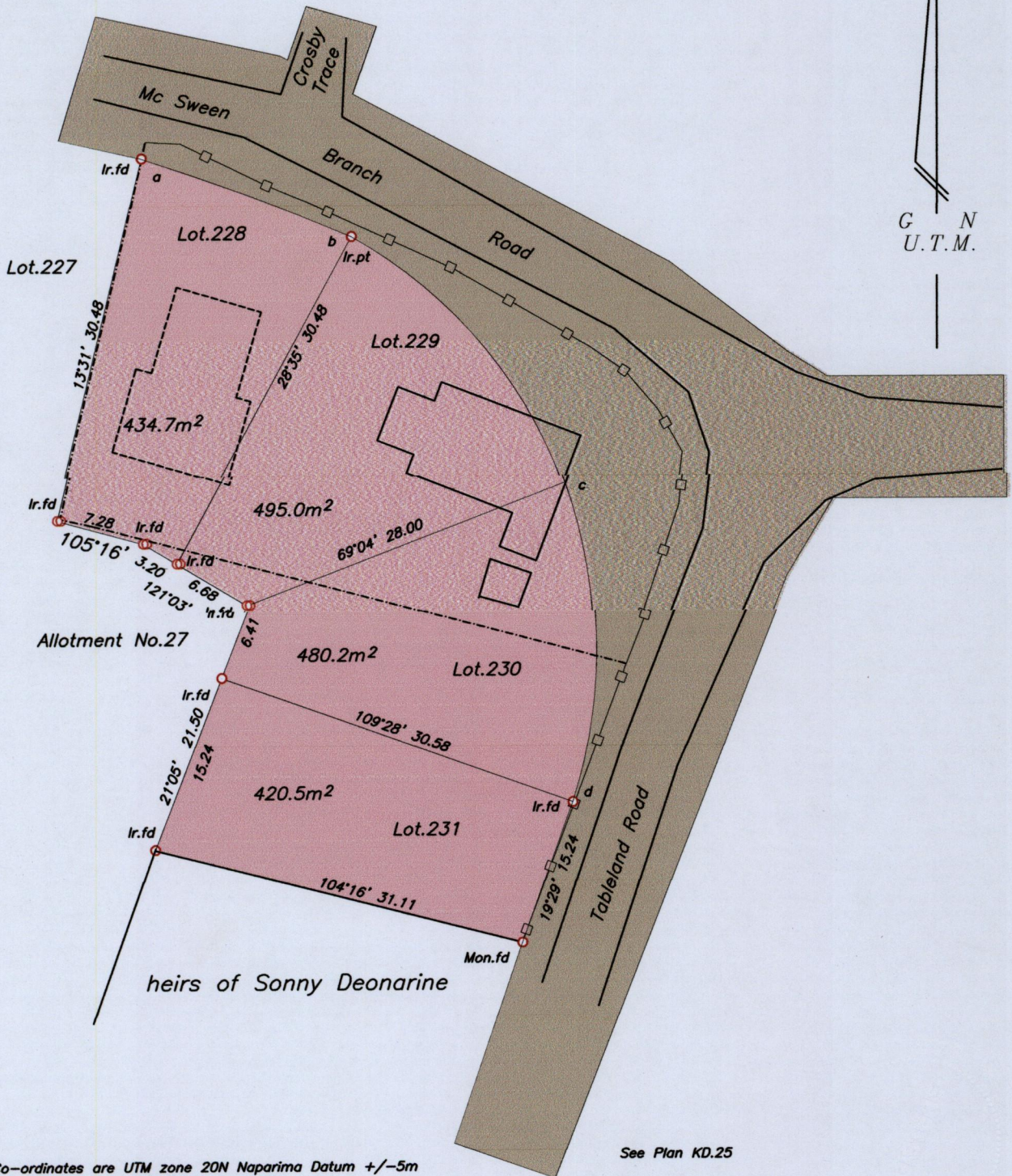
54F  
2/c

Ward of Ortoire

County of Victoria

Mairao Village

2012



G N  
U.T.M.

Co-ordinates are UTM zone 20N Naparima Datum +/-5m  
 obtained from handheld GPS  
 Bearings are U.T.M. grid based on Solar Observations  
 Note: To obtain compass bearings add 18 minutes.

See Plan KD.25

SCALE 1/1000  
Distances are in metres

PLAN of 4 Parcels of land coloured pink in the Ward of Ortoire  
 Containing together one eight three zero point four square metres  
 Surveyed by me, with due authority, in July 2015  
 for His Grace The Roman Catholic Archbishop Of Port of Spain  
 Certified correct in accordance with Regulation 25 (1)  
 of the Land Surveyors Regulations 1998,

Checked by..... *L. S. Alan Lum*.....

Entered..... Trinidad & Tobago Land Surveyor..... 1.5/7/15.....

LAL\Pans\R\RCA\ RCA Tableland

