

1558

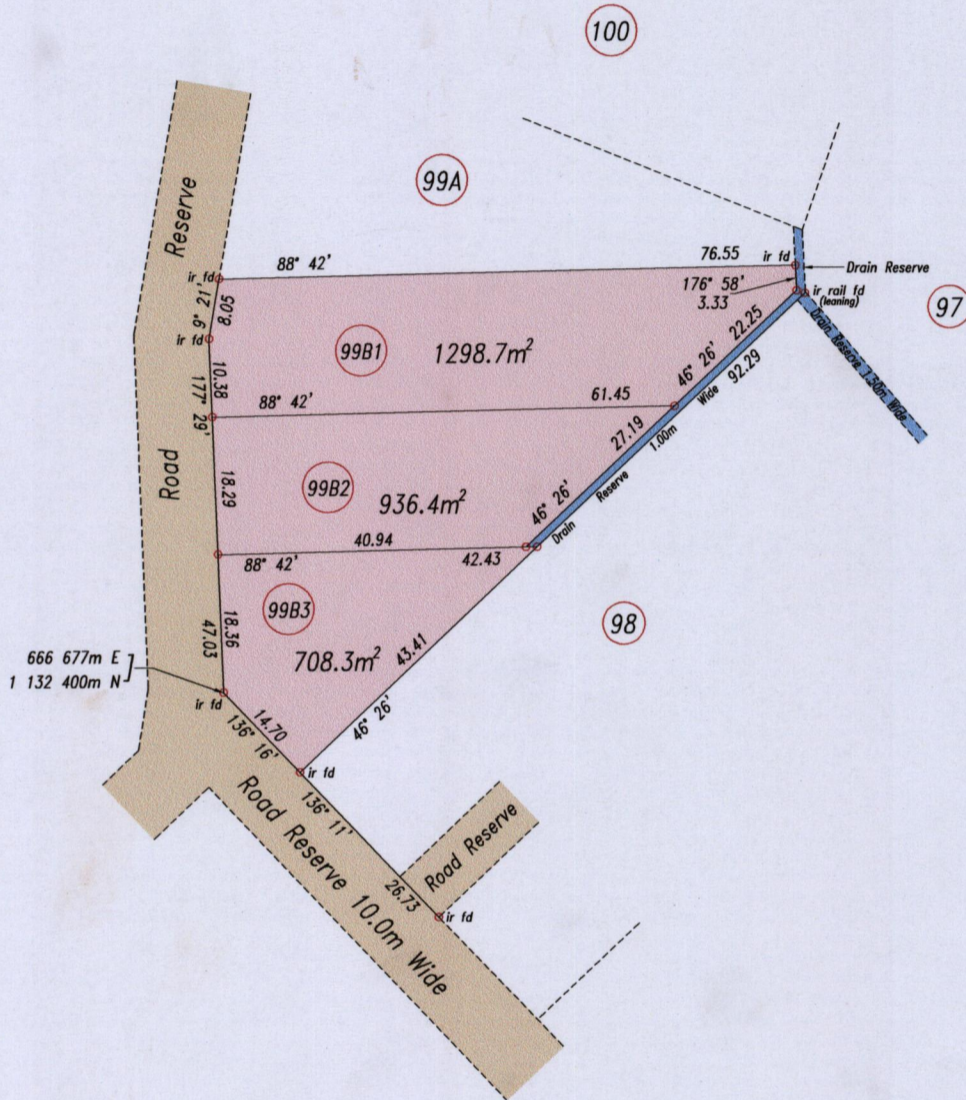
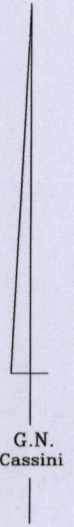
197

Process SD# 111042
U.P.I.N. No.:

Ward of Naparima

County of Victoria

Cadastral Sheet 63B
2/a/3



Coordinate Information
Source: GPS (Hand Held)
Error Statement: +/- 5m
Datum: Naparima, UTM (Zone 20).

SCALE 1: 1000

Distances are in metres

o Denotes iron put except otherwise stated

Bearings are Cassini Grid based on Solar Observations

PLAN of 3 parcels of land coloured pink in the Ward of Naparima
 Containing together two thousand nine hundred and forty three point four square metres
 Surveyed by me, with due authority, in July 2015 at the request of D. Arjoonsingh
 Certified Correct in accordance with Regulation 25(1) of the Land Surveyors' Regulations 1998.

Entered

S.A. Roopchand

Trinidad & Tobago Land Surveyor 8/7/2015

MINISTRY OF FOOD PRODUCTION
 LAND AND MARINE AFFAIRS
 JUL 15 2015
 #198
 Lands & Surveys Division

LAND SURVEY BOARD
 LYNN ROOPCHAND
 TTLS
 0071/2015
 OF TRINIDAD AND TOBAGO