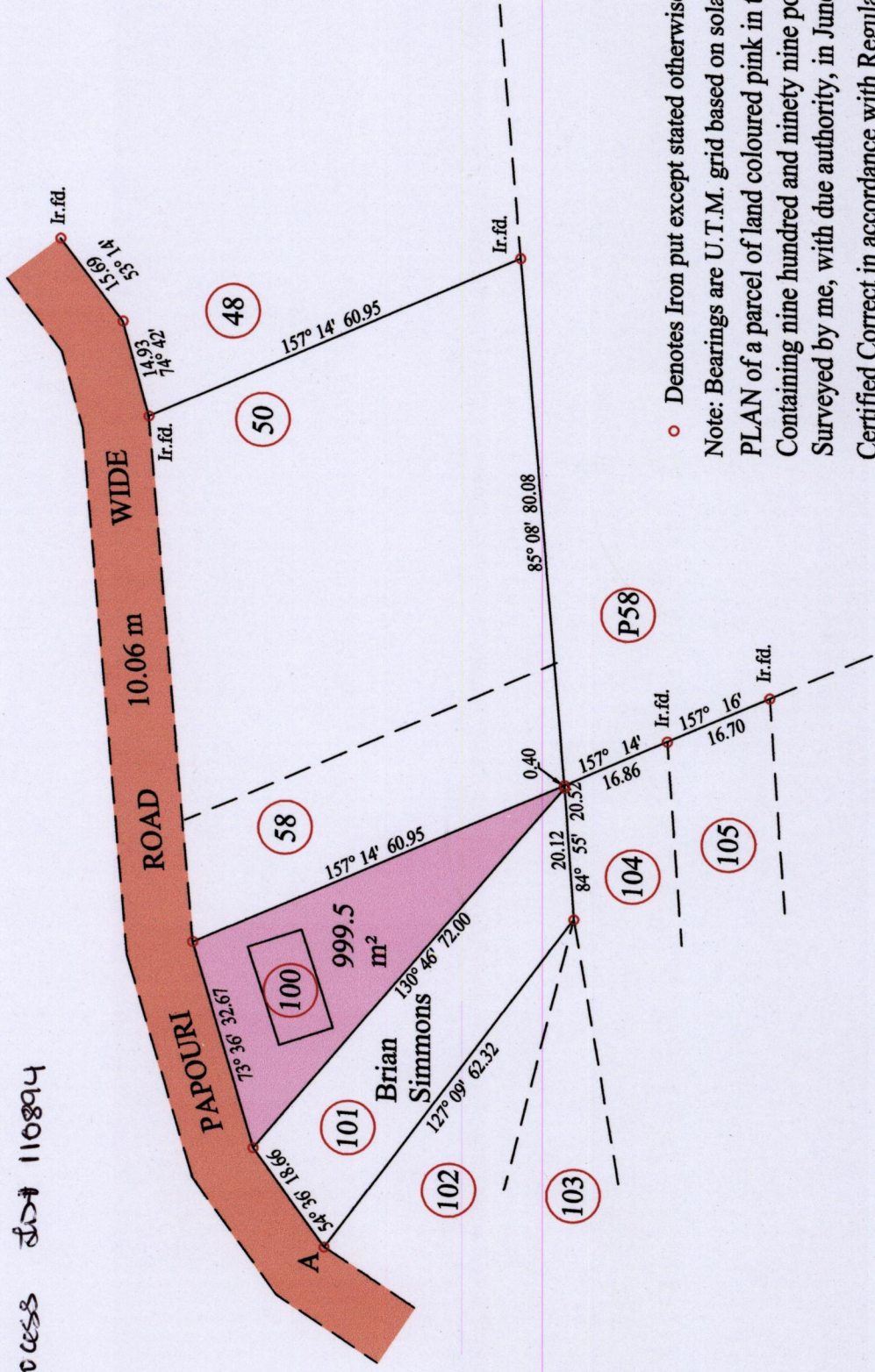


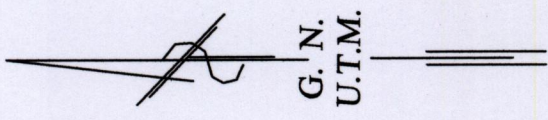
Ward of Naparima
 County of Victoria
 Cadastral Sheet G.9.k 64A.
 3/b

U.P.R.N.

Process ~~110894~~ 110894



At Station (A)
 E 676778
 N 1130600
 Reading taken with
 Handheld G.P.S.
 U.T.M. Zone 20
 WGS84
 ± 5 m.



1558



SCALE : 1:1000

Distances are in metres

○ Denotes Iron put except stated otherwise.

Note: Bearings are U.T.M. grid based on solar observations

PLAN of a parcel of land coloured pink in the Ward of Naparima

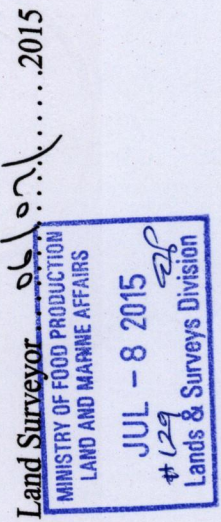
Containing nine hundred and ninety nine point five square metres

Surveyed by me, with due authority, in June 2015 for Shawn Bennett

Certified Correct in accordance with Regulation 25(1) of the Land Surveyors Regulations 1998

Checked by *Shawn Bennett*

Entered on *Shawn Bennett* 2015



191