

1558

Cadastral Sheet G.25.D. 74F  
1/b

177

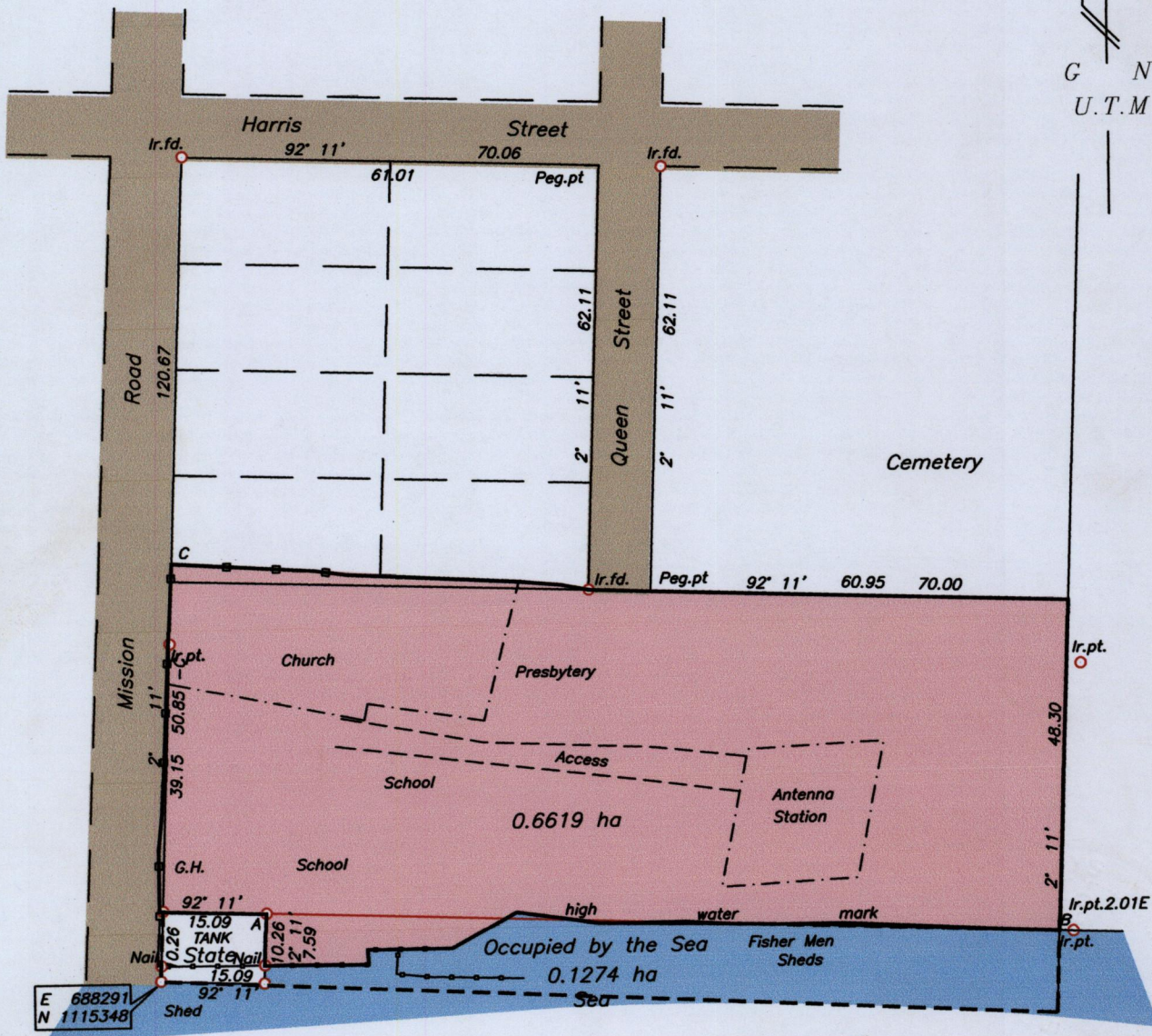
R/D 1022/1878

Ward of Moruga

County of Victoria

Amended Plan

Process JPH 110806



G N  
U.T.M

- wall
- G.H. guard hu
- - - - - fence
- C - Ir.fd 94° 33' 61.10
- A - B 92° 11' 115.92

See Plan in RD.1022/1878  
See Plans Bks.675/215 & EB.127

SCALE 1/1000

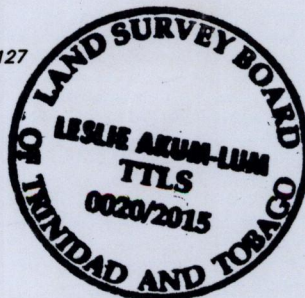
Distances are in metres

○ Denotes Ir.pt except otherwise stated

Co-ordinates are UTM zone 20N Naparima Datum +/-5m  
obtained from handheld GPS

Bearings are U.T.M. grid based on Magnetic Needle

Note: To obtain compass bearings add 29 minutes.



PLAN of a Parcel of land coloured Pink in the Ward of Moruga  
Containing zero point six six one nine hectares

Surveyed by me, with due authority, on Feb. 2011 for His Grace the Roman Catholic  
Archbishop of Port-of-Spain  
In accordance with Regulation 25 (1) of the Land Surveyors' Regulations 1998,

I certify that this plan is correct.

Checked by.....

*L. E. Akum-Lum*

Entered..... Trinidad & Tobago Land Surveyor

26/5/15

LAL\Plans\R\RCA\RCA Moruga\RCA Moruga

MINISTRY OF FOOD PRODUCTION  
LAND AND MARINE AFFAIRS  
JUL - 1 2015  
# 2  
Lands & Surveys Division