

Process ID# 110718

1558

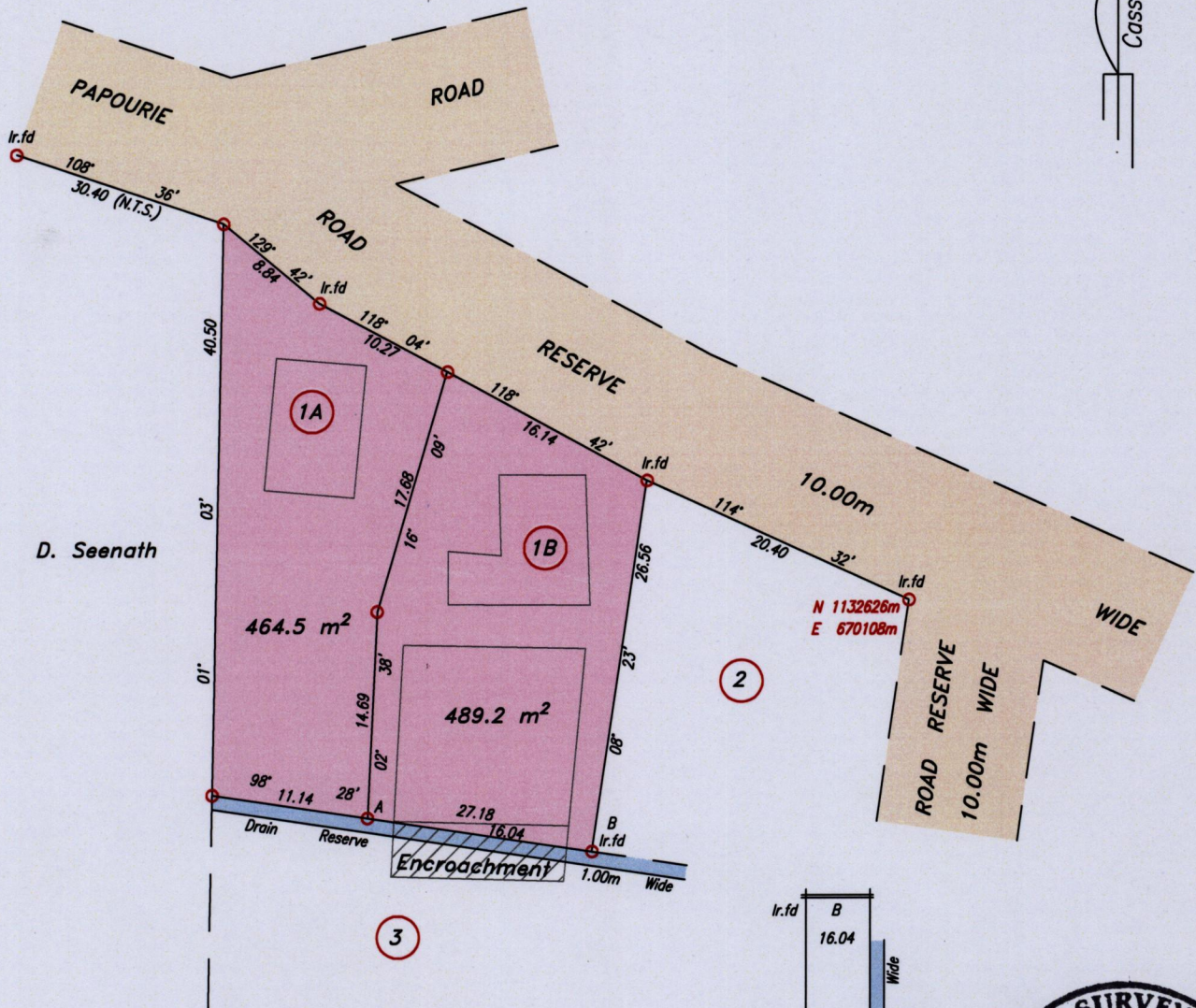
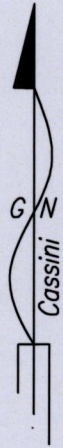
Cadastral Sheet G.8.B. 63C

1/a 176

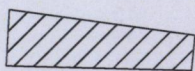
Ward of Naparima

County of Victoria

See Plan P.F.103



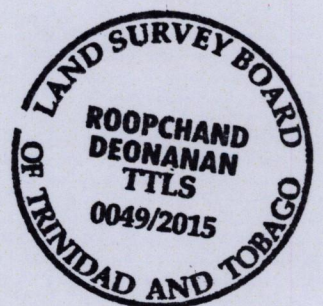
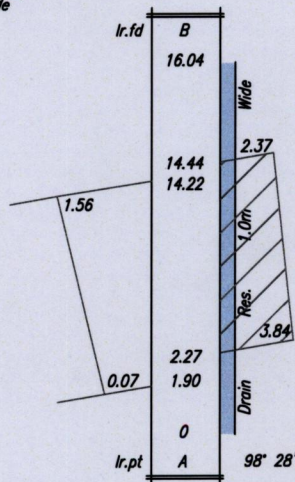
D. Seenath



Area of Encroachment = 38.3 m²

Note :

Coordinates obtained by
hand held G.P.S. (+/-3.0m.)
For Identification only



SCALE 1:500

Distances are in metres

○ Denotes Iron put except where otherwise stated
Bearings are Cassini Grid based on Solar Observations
PLAN of 2 Parcels of land coloured pink in the Ward of Naparima
Containing together nine hundred and fifty three point seven square metres
Surveyed by me, with due authority, in June 2015 for J. Seenath
Certified Correct in accordance with Regulation 25 (1) of the Land Surveyors' Regulations 1998,

Checked by

Roopchand Deonanan

Entered on

Trinidad & Tobago Land Surveyor. 30th June 2015

PATH = ADA004 D./DEO/R&J SEENATH DWG.

