

Process ID# 110729

1558

Ward of Naparima

County of Victoria

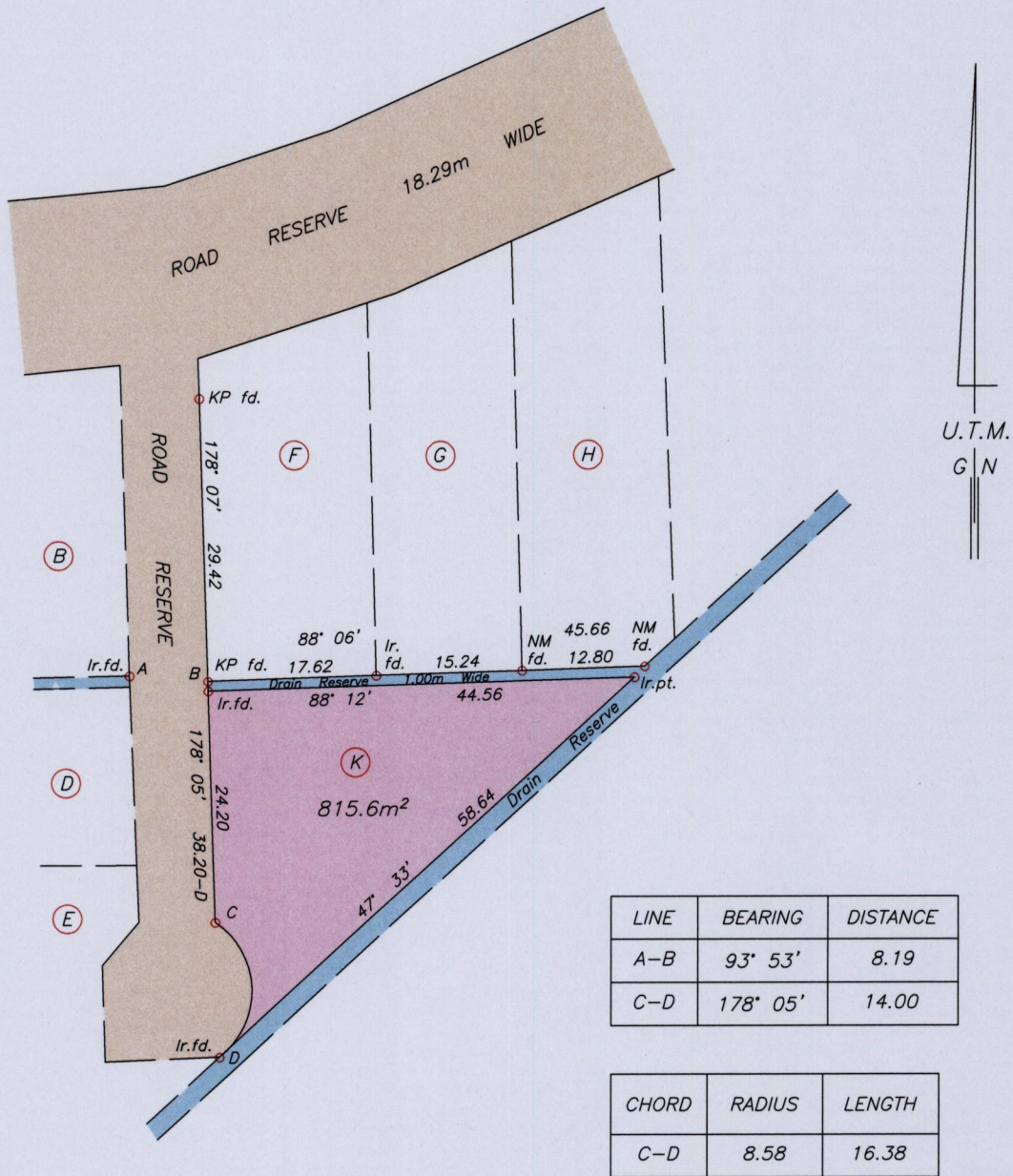
Cadastral Sheet G.8.A., $\frac{63B}{2/b}$

170

PALMISTE

VIDE Bk.1221 fol.108

R.D.# 1453/1985



B : 667541mE, 1132196mN

Co-ordinates are U.T.M. Zone 20 Naparima Datum +/-7m obtained from handheld G.P.S.

SCALE 1:750

Bearings are U.T.M. Grid based on Solar Observations

Distances are in metres

PLAN of a Parcel of land coloured pink in the Ward of Naparima

Containing eight hundred and fifteen point six square metres

Surveyed by me, with due authority, in June 2015 for Lloyd Edward John and Elsa John

Certified Correct in accordance with Regulation 25(1) of the Land Surveyors Regulations 1998

Checked by

Entered

Lizbeth Hamilton

Trinidad & Tobago Land Surveyor June 26 2015

