

Process ID# 110726

1558

169

City of San Fernando

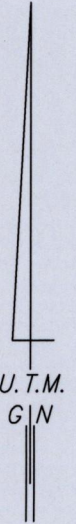
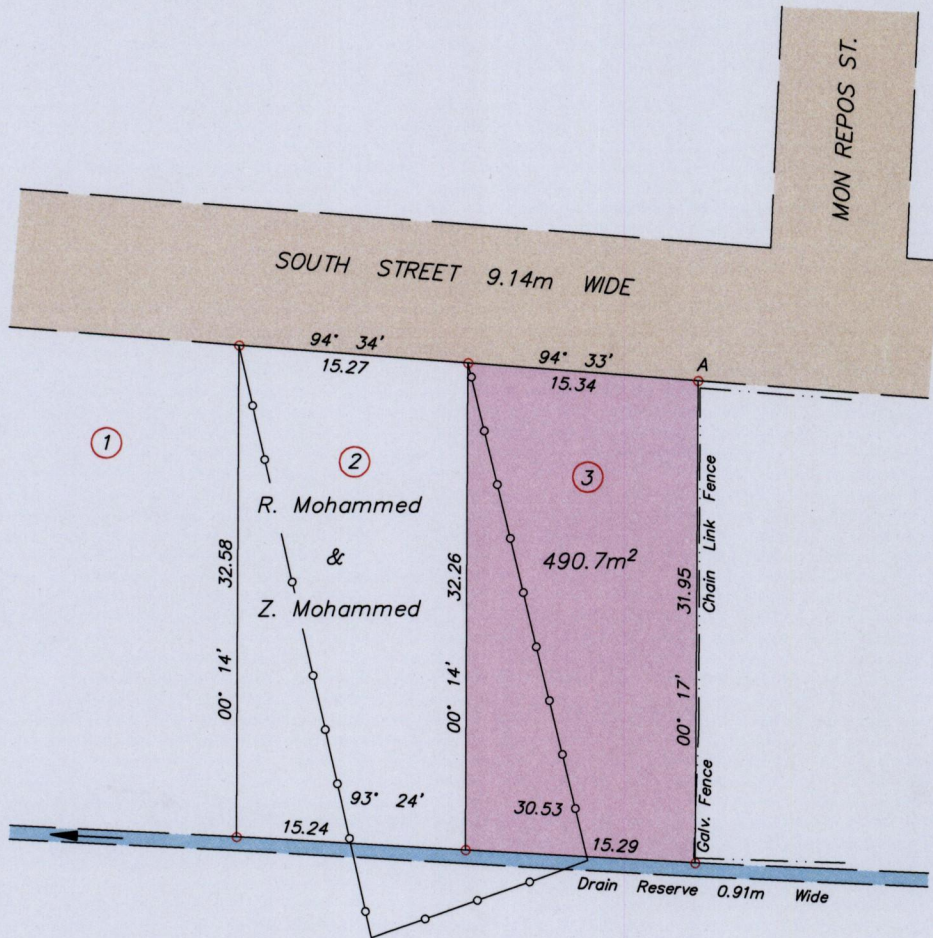
County of Victoria

Cadastral Sheet G.3.J., 53F
1/c/3

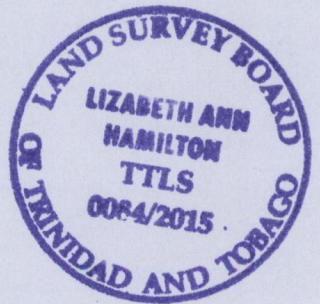
MON REPOS, SAN FERNANDO

R.D.# 19431/1986

Bk.1338 fol.47



—○—○—○— Line of fence posts



A : 669327mE, 1136285mN

Co-ordinates are U.T.M. Zone 20 Naparima Datum +/-5m
obtained from handheld G.P.S.

Bearings are U.T.M. Grid based on Solar Observations

SCALE 1:500

○ denotes Ir.f.d. unless otherwise stated

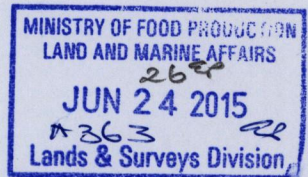
Distances are in metres

PLAN of a Parcel of land coloured pink in the City of San Fernando

Containing four hundred and ninety point seven square metres

Surveyed by me, with due authority, in June 2015 for Ava Canhigh

Certified Correct in accordance with Regulation 25(1) of the Land Surveyors Regulations 1998



Checked by

Elizabeth Ann Hamilton

Entered

Trinidad & Tobago Land Surveyor June 26 2015