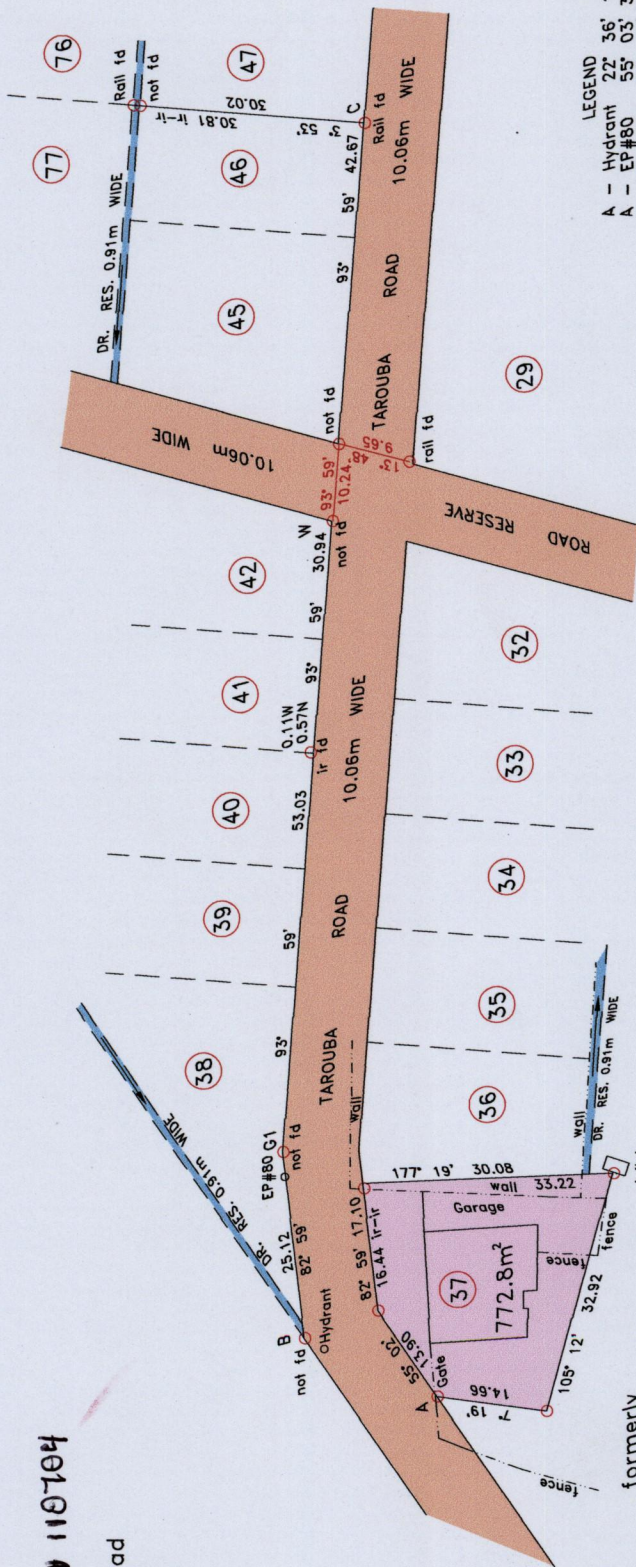
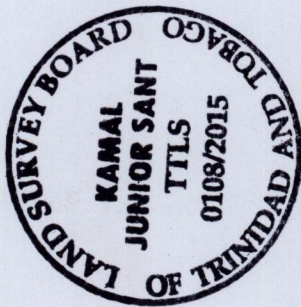
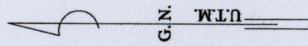


Cadastral Sheet 53F G.3.G.
 1/b
 Ward of Naparima
 County of Victoria

LOCATION	WGS-84 UTM Zone 20N ±9m
C	670,746mE 1,138,121mN



LEGEND

A - Hydrant	22' 36"	16.21
A - EP#80	55' 03"	35.63
A - B	23' 23"	19.25
EP - Electricity Pole		

Scale 1 : 1,000
 Distances are in metres

U.P.I.N. No.:.....

VIDE in Plan A.K. 24

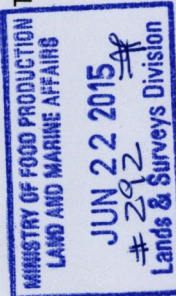
Process *SDA 110704*

Address:
 #140 Tarouba Road
 Tarouba Village
 Marabella.

formerly
 Ste. Madeline Sugar Company Limited
 then
 Sugar Industry Labour Welfare Committee
 (S.I.L.W.C.)

○ Denotes iron put unless otherwise stated
 Bearings are U.T.M. grid based on solar observations.
 Coordinates are WGS-84 Datum, UTM Zone 20N, obtained from handheld GPS observation
 PLAN of a parcel of land coloured pink in the Ward of Naparima.
 Containing seven hundred and seventy two point eight square metres.
 Surveyed by me with due authority, on 17th June, 2015, at the request of S.I.L.W.C.
 In accordance with Regulation 25(1) of the Land Surveyors' Regulations 1998,
 I certify that this plan is correct.

Kamal J. Sant
 Trinidad & Tobago Land Surveyor



Entered

1558

167

468