

Process Job 110699

1558

Cadastral Sheet G 9 J 64 A

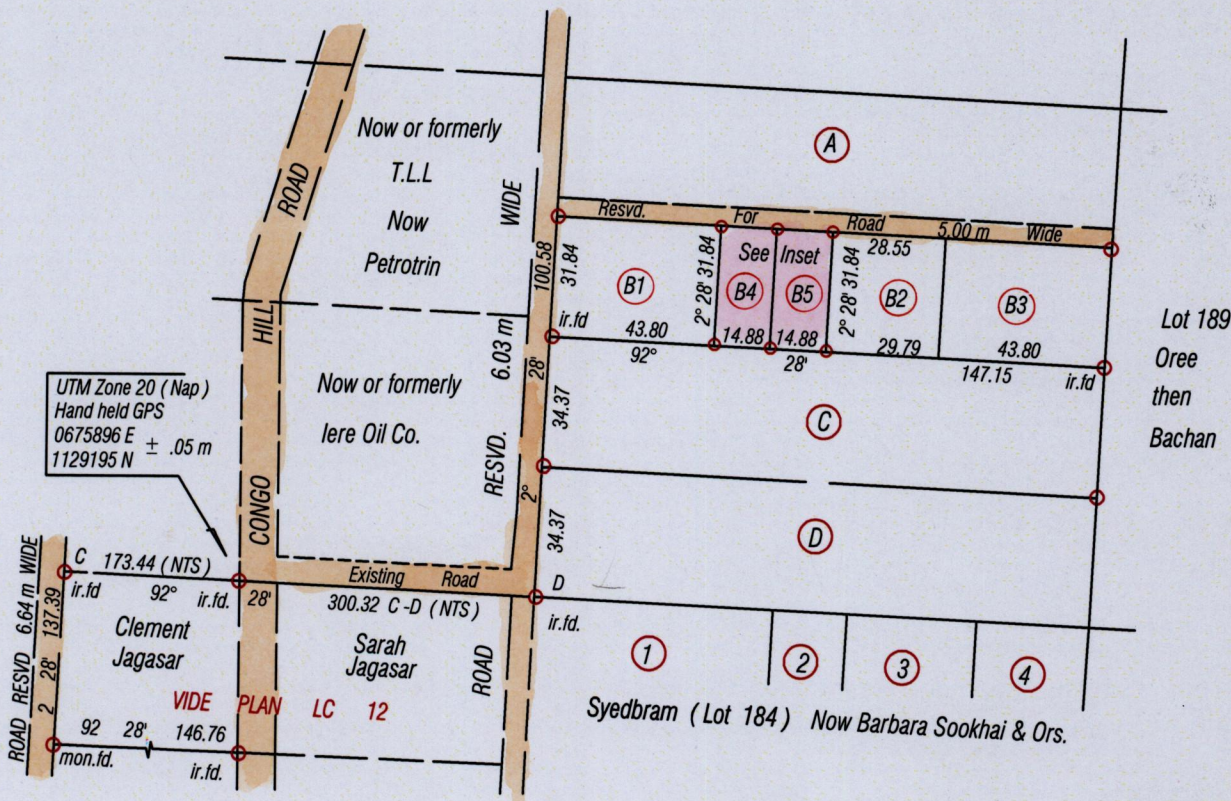
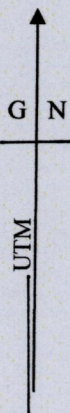
County of Victoria 3/b

Ward of Naparima

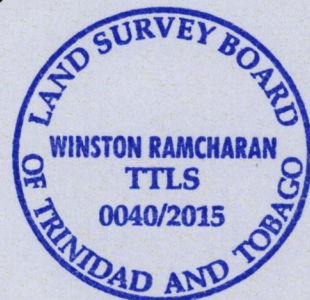
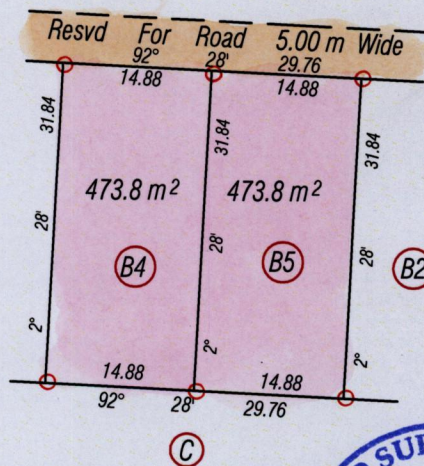
166

Bk. 1021 Fol. 216

Vide Plan AE 77



INSET
Scale = 1 / 750



Bearings are UTM Grid based on Solar Obs.

○ Denotes iron put except otherwise stated

SCALE 1 / 2000
Distances are in Metres

PLAN of 2 Parcels of land coloured pink in the Ward of Naparima
Containing nine hundred and forty seven point six square metres
Surveyed by me, with due authority, in June 2015 For Roma Samuel
Certified Correct in accordance with Regulation 25 (1) of the Land Surveyors' Regulations 1998.

Checked by.....
Entered on.....

Winston Ramcharan
Trinidad & Tobago Land Surveyor... 10 June 2015

MINISTRY OF FOOD PRODUCTION
LAND AND MARINE AFFAIRS
JUN 17 2015
#247
Lands & Surveys Division

342