

U.P.R.N.

1558

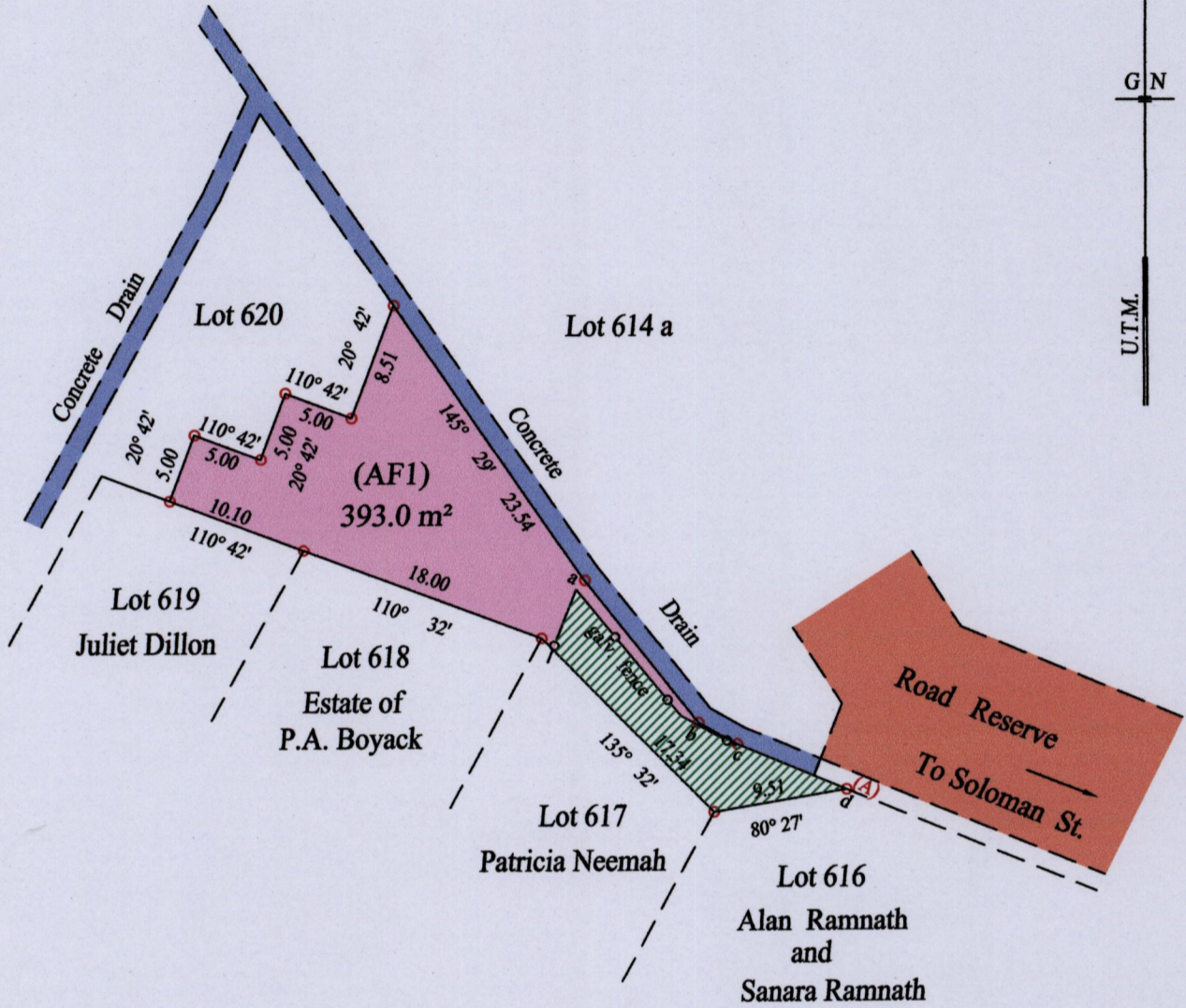
City of San Fernando
County of Victoria

162

Reg. Deed No. 201401832596

Cadastral Sheet G.3.F 53.F.
1/c

Process SDH 110672



GN
U.T.M.

At Station (A)
E 0669048
N 1137281
Reading taken with
Handheld G.P.S.
U.T.M. Zone 20
Naparima
± 5 m.



Encroachment Area
81.0 m²

a - b 141° 36' 13.13
b - c 119° 32' 3.10
c - d 112° 45' 8.39



○ Denotes Iron found.

SCALE : 1:500

Note: Bearings are U.T.M. grid based on solar observations
Distances are in metres
PLAN of a parcel of land coloured pink in the City of San Fernando
Containing three hundred and ninety three point zero square metres
Surveyed by me, with due authority, in June 2015 for Ann Forde
Certified Correct in accordance with Regulation 25(1) of the Land Surveyors Regulations 1998

Checked by

Entered on Trinidad & Tobago Land Surveyor 16-06-2015

MINISTRY OF FOOD PRODUCTION
LAND AND MARINE AFFAIRS
JUN 17 2015
#233
Lands & Surveys Division